



OVER 60?

Secure this property
for up to **59% less!**

Price

£195,000

Freehold

2x  1x  1x 

**Willington Street,
Maidstone, Kent, ME15**

Wards
Helping you move forwards



Main features

- Own entrance with stairs to first floor
- Generously proportioned accommodation
- Detached garage and driveway
- Further private garden to the rear
- Perfectly positioned for a range of amenities and bus links into town centre

Accommodation

FIRST FLOOR

Lounge/Diner: 14'8 x 13'1 (4.47m x 3.99m)

Kitchen: 10'1 x 7'6 (3.08m x 2.29m)

Bedroom 1: 10'5 x 9'4 (3.18m x 2.85m)

Bedroom 2: 10'8 x 9'2 (3.25m x 2.80m)

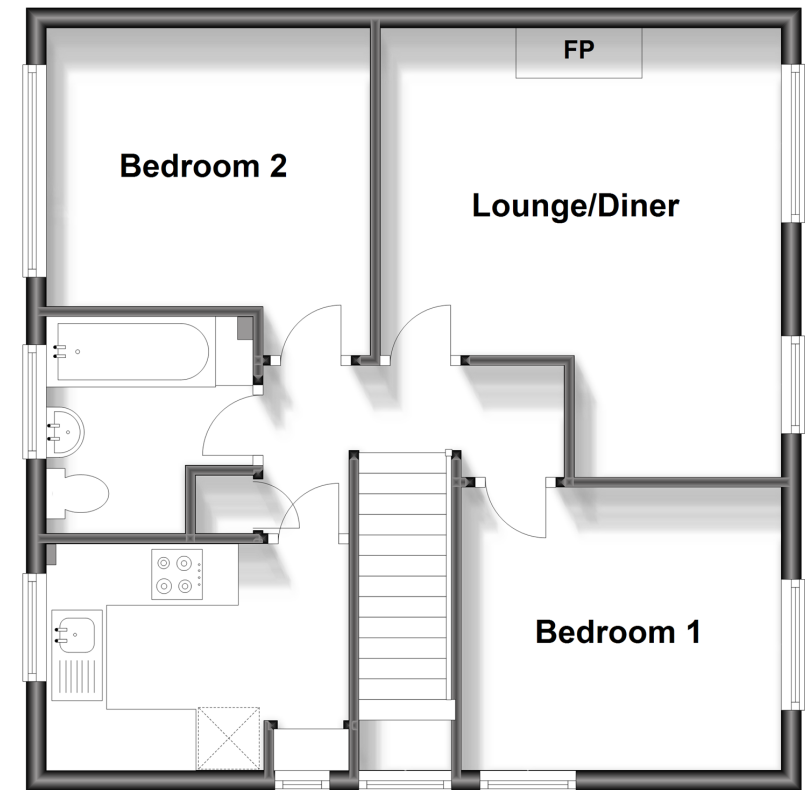
Bathroom: 7'0 x 6'9 (2.14m x 2.06m)

OUTSIDE

Detached Garage and Driveway
Rear Garden

First Floor

Approx. 53.7 sq. metres (578.3 sq. feet)



Call Bearsted - 01622 730955 ■ wardsofkent.co.uk

- Legal advice should be taken to verify fixtures/fittings, planning, alterations and/or lease details
- Appliances & services are untested, dimensions are approximate and floor plans are not to scale
- Through a Homewise Home For Life Plan people aged 60+ can secure this property for up to 59% less, by purchasing a Lifetime Lease.



12328487/20230925/SG/MC