



**Guide Price**  
**£525,000**

**Freehold**

4x  2x  1x 

**Webbs Close,  
Maidstone, Kent, ME15**

**OVER 60?**

Secure this property  
for up to **59% less!**

*Wards*  
Helping you move forwards





## Main features

- **Stunning condition and further improved modern build house on popular development**
- **Beautiful position overlooking tree-lined nature reserve**
- **Cul-de-sac setting, close to pub, restaurant, shops and supermarket**
- **Garage and parking**
- **Remainder of NHBC guarantee**

## Accommodation

### GROUND FLOOR

Entrance Hall: 10'5 x 6'6 (3.18m x 1.98m)  
 Lounge: 16'4 x 10'9 (4.98m x 3.28m)  
 Kitchen/Diner: 21'0 x 12'2 at widest point (6.41m x 3.71m)  
 Utility: 7'9 x 5'10 (2.36m x 1.78m)  
 Cloakroom: 5'10 x 3'1 (1.78m x 0.94m)

### FIRST FLOOR

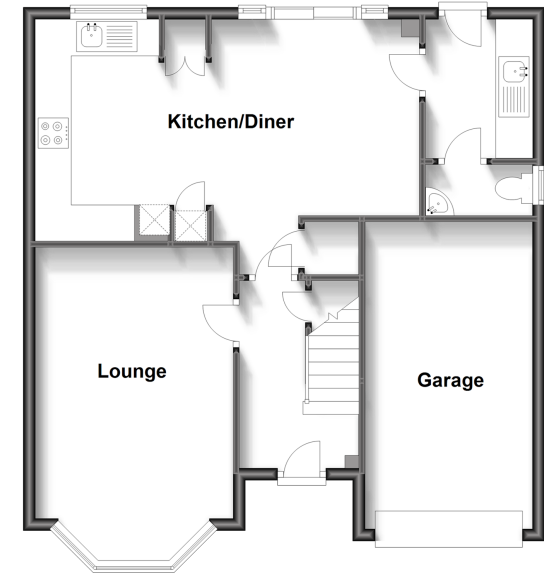
Landing  
 Bedroom 1: 14'7 x 10'9 (4.45m x 3.28m)  
 En-suite Shower Room: 7'2 x 6'11 (2.19m x 2.11m)  
 Bedroom 2: 14'0 x 9'3 (4.27m x 2.82m)  
 Bedroom 3: 12'0 x 10'3 (3.66m x 3.13m)  
 Bedroom 4: 10'2 x 9'6 (3.10m x 2.90m)  
 Bathroom: 7'8 x 6'10 (2.34m x 2.08m)

### OUTSIDE

Front and Rear Gardens  
 Garage and Off Road Parking

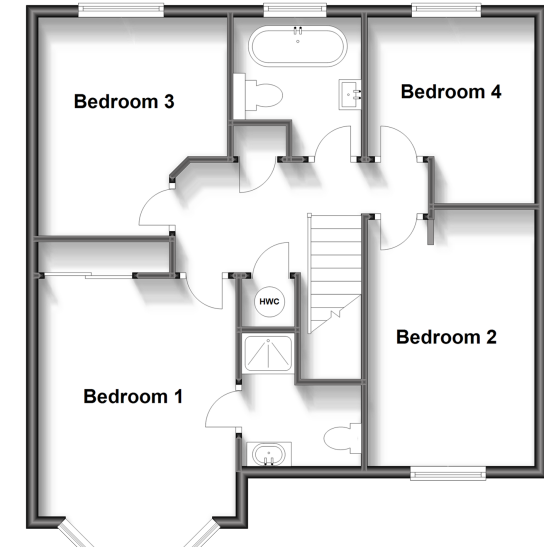
### Ground Floor

Approx. 67.1 sq. metres (722.0 sq. feet)



### First Floor

Approx. 64.2 sq. metres (690.5 sq. feet)



**Call Bearsted - 01622 730955 ■ [wardsofkent.co.uk](http://wardsofkent.co.uk)**

- Legal advice should be taken to verify fixtures/fittings, planning, alterations and/or lease details
- Appliances & services are untested, dimensions are approximate and floor plans are not to scale
- Through a Homewise Home For Life Plan people aged 60+ can secure this property for up to 59% less, by purchasing a Lifetime Lease.



12328490/20240411/BM/MC