



Price
£385,000

Freehold

3x  1x  1x 

**Kennington Close,
Maidstone, Kent, ME15**

OVER 60?

Secure this property
for up to **59% less!**

Wards
Helping you move forwards



Main features

- Improved home situated in a cul-de-sac location
- Modern fitted kitchen/breakfast room
- Attractive lounge with fireplace and adjoining large double glazed conservatory
- Downstairs cloakroom
- Replacement bathroom suite

Accommodation

GROUND FLOOR

Entrance Hall

Cloakroom

Lounge: 17'11 x 14'2 (5.46m x 4.32m)

Kitchen/Breakfast Room: 11'2 x 10'9 (3.41m x 3.28m)

Conservatory: 18'0 x 10'0 (5.49m x 3.05m)

FIRST FLOOR

Landing

Bedroom 1: 11'7 x 11'6 (3.53m x 3.51m)

Bedroom 2: 11'1 x 9'5 (3.38m x 2.87m)

Bedroom 3: 8'2 x 7'1 (2.49m x 2.16m)

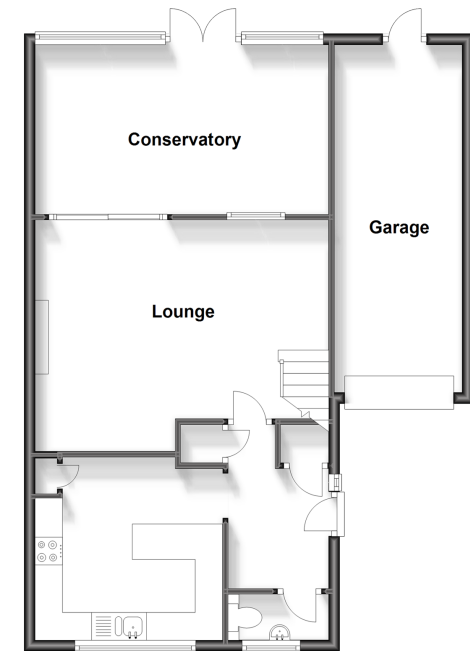
Bathroom: 6'4 x 5'11 (1.93m x 1.80m)

OUTSIDE

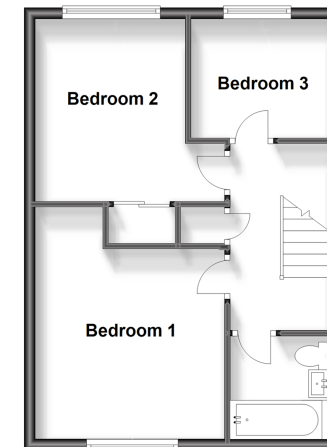
Front and Rear Gardens

Garage and Driveway

Ground Floor
Approx. 73.2 sq. metres (787.7 sq. feet)



First Floor
Approx. 40.6 sq. metres (436.9 sq. feet)



Call Bearsted - 01622 730955 ■ wardsofkent.co.uk

- Legal advice should be taken to verify fixtures/fittings, planning, alterations and/or lease details
- Appliances & services are untested, dimensions are approximate and floor plans are not to scale
- Through a Homewise Home For Life Plan people aged 60+ can secure this property for up to 59% less, by purchasing a Lifetime Lease.



12328593/20230821/TT/JW