



Price
£335,000

Freehold

3x  1x  2x 

**The Beams, Maidstone,
Kent, ME15**

Wards
Helping you move forwards



Main features

- Modern condition and spacious accommodation
- Attractive kitchen/breakfast room
- Garage converted to office/playroom
- Quiet cul-de-sac setting, yet well connected for schools and transport
- Level private rear garden with a leafy countryside outlook

Accommodation

GROUND FLOOR

Entrance Hall
Kitchen/Breakfast Room
Cloakroom
Family Room
Lounge

FIRST FLOOR

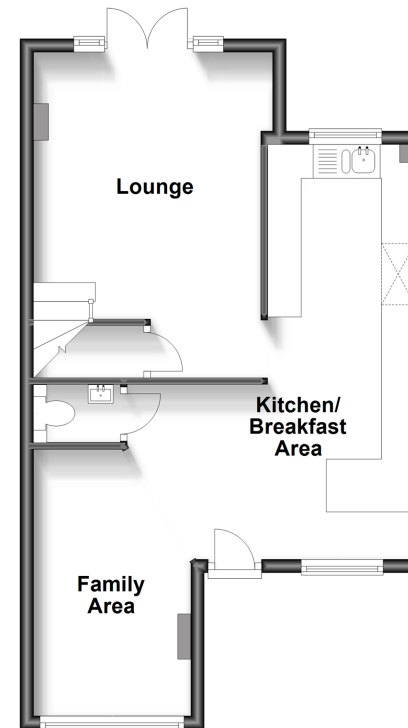
Landing
Bedroom 1
Bedroom 2
Bedroom 3
Bathroom

OUTSIDE

Off Road Parking
Rear Garden

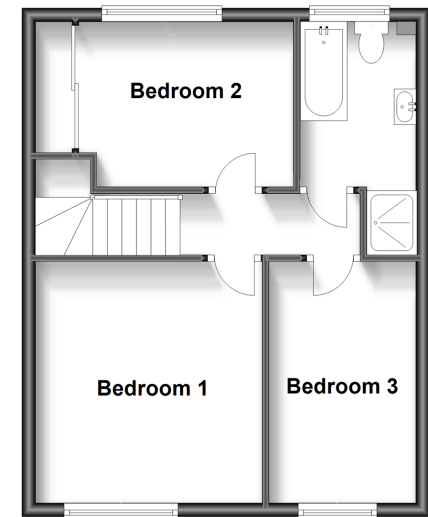
Ground Floor

Approx. 45.3 sq. metres (487.6 sq. feet)



First Floor

Approx. 41.1 sq. metres (442.1 sq. feet)



Call Bearsted - 01622 730955 ■ wardsofkent.co.uk

- Legal advice should be taken to verify fixtures/fittings, planning, alterations and/or lease details
- Appliances & services are untested, dimensions are approximate and floor plans are not to scale



12328620/20230802/MC/JW