



Price
£363,000

Freehold

3x  2x  1x 

**Young Lane,
Harrietsham, Maidstone,
Kent, ME17**

OVER 60?

Secure this property
for up to **59% less!**

Wards
Helping you move forwards



Main features

- **Modern build in central location with remainder of NHBC guarantee**
- **Tandem carport for off road parking**
- **Well positioned for rail links to London**
- **Walking distance of pub, shops and supermarket**
- **Charming end of cul-de-sac setting within easy reach of the village centre**

Accommodation

GROUND FLOOR

Entrance Hall
Cloakroom
Kitchen/Diner: 15'1 x 8'0 (4.60m x 2.44m)
Lounge: 15'1 x 14'1 (4.60m x 4.30m)

FIRST FLOOR

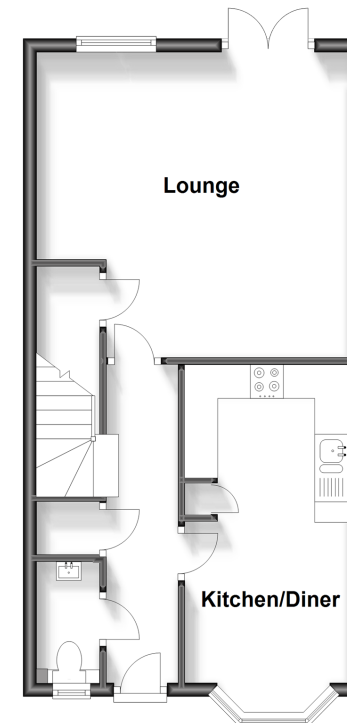
Landing
Bedroom 1: 15'0 x 8'1 (4.58m x 2.47m)
En Suite Shower Room: 7'1 x 4'1 (2.16m x 1.25m)
Bedroom 2: 11'0 x 8'1 (3.36m x 2.47m)
Bedroom 3: 10'0 x 6'1 (3.05m x 1.86m)
Bathroom: 6'1 x 5'1 (1.86m x 1.55m)

OUTSIDE

Front Garden
Carport
Off Road Parking

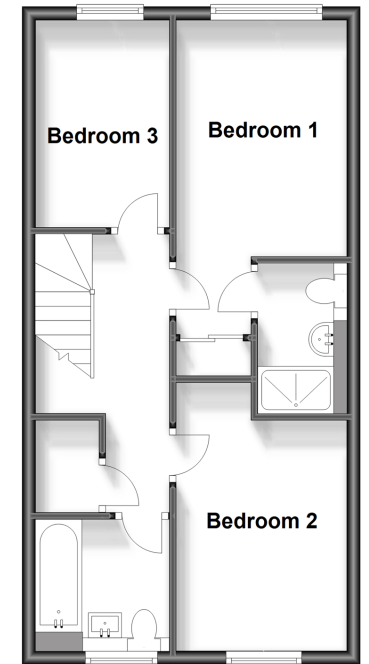
Ground Floor

Approx. 43.9 sq. metres (472.9 sq. feet)



First Floor

Approx. 43.7 sq. metres (470.6 sq. feet)



Call Bearsted - 01622 730955 ■ wardsofkent.co.uk

■ Legal advice should be taken to verify fixtures/fittings, planning, alterations and/or lease details
■ Through a Homewise Home For Life Plan people aged 60+ can secure this property for up to 59% less, by purchasing a Lifetime Lease.

■ Appliances & services are untested, dimensions are approximate and floor plans are not to scale



12328624/20231110/MC/MC