



OVER 60?

Secure this property
for up to **59% less!**

Price

£400,000

Freehold

3x  2x  1x 

**Colyn Drive, Maidstone,
Kent, ME15**

Wards
Helping you move forwards



Main features

- Double fronted in corner plot position
- Fabulous internal condition
- Gorgeous fully enclosed rear garden
- Remainder of NHBC build guarantee
- Easy access to local shops, school, supermarket and restaurant

Accommodation

GROUND FLOOR

Entrance Hall: 7'4 x 6'7 (2.24m x 2.01m)
 Kitchen/Diner: 17'4 x 8'6 (5.29m x 2.59m)
 Larder/Utility: 7'1 x 4'11 (2.16m x 1.50m)
 Lounge: 17'5 x 9'10 (5.31m x 3.00m)
 Cloakroom: 6'2 x 4'0 (1.88m x 1.22m)

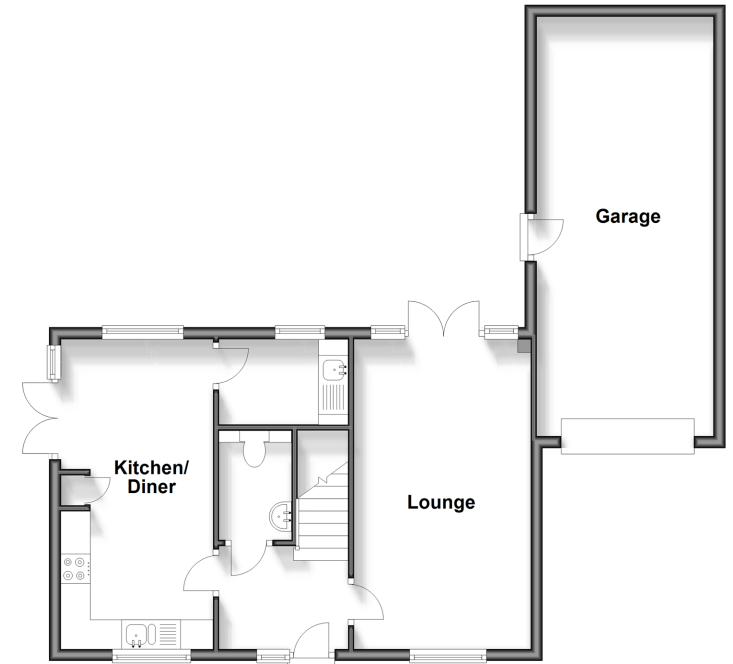
FIRST FLOOR

Landing
 Bedroom 1: 13'1 x 10'6 (3.99m x 3.20m)
 En-suite Shower Room: 6'0 x 5'6 (1.83m x 1.68m)
 Bedroom 2: 10'1 x 10'0 (3.08m x 3.05m)
 Bedroom 3: 9'9 x 6'7 (2.97m x 2.01m)
 Bathroom: 7'1 x 6'6 (2.16m x 1.98m)

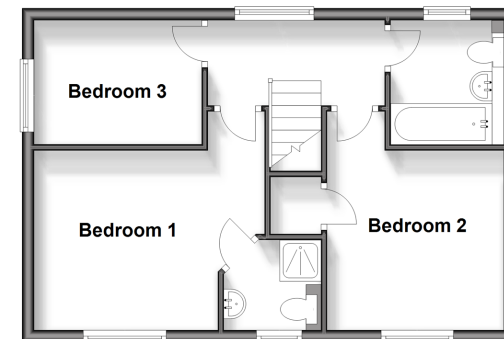
OUTSIDE

Side and Rear Gardens
 Garage and Off Road Parking

Ground Floor
 Approx. 63.5 sq. metres (683.7 sq. feet)



First Floor
 Approx. 42.0 sq. metres (452.4 sq. feet)



Call Bearsted - 01622 730955 ■ wardsofkent.co.uk

- Legal advice should be taken to verify fixtures/fittings, planning, alterations and/or lease details
- Appliances & services are untested, dimensions are approximate and floor plans are not to scale
- Through a Homewise Home For Life Plan people aged 60+ can secure this property for up to 59% less, by purchasing a Lifetime Lease.



12328629/20231222/MC/MC