



Price
£310,000

Freehold

3x  1x  1x 

**Chislehurst Close,
Senacre, Maidstone,
Kent, ME15**

OVER 60?

Secure this property
for up to **59% less!**

Wards
Helping you move forwards



Main features

- Fabulous corner plot with gardens to front, side and rear
- Detached garage to rear with further off road parking
- Excellent opportunity to add your own taste and style
- Spacious accommodation
- Popular location near shops and schools

Accommodation

GROUND FLOOR

Entrance Hall: 13'8 x 9'9 (4.17m x 2.97m)
 Utility Room: 5'4 x 4'6 (1.63m x 1.37m)
 Cloakroom: 5'5 x 2'7 (1.65m x 0.79m)
 Kitchen: 12'0 x 7'8 (3.66m x 2.34m)
 Lounge/Dining Room: 23'3 x 11'6 at widest point (7.09m x 3.51m)
 Conservatory: 10'8 x 7'9 (3.25m x 2.36m)

FIRST FLOOR

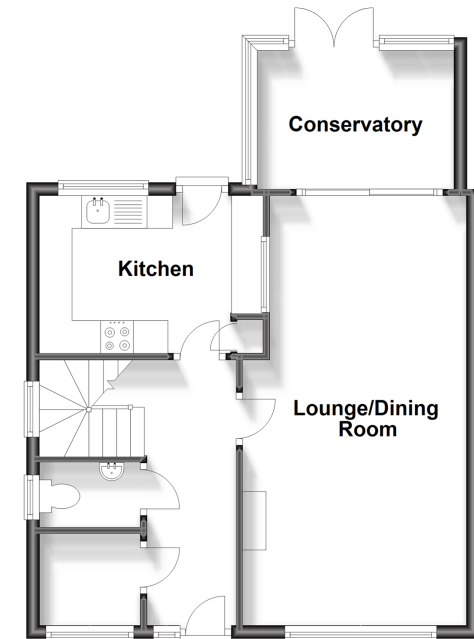
Landing
 Bedroom 1: 11'8 x 11'1 (3.56m x 3.38m)
 Bedroom 2: 11'7 x 10'9 up to fitted wardrobes (3.53m x 3.28m)
 Bedroom 3: 9'11 x 7'10 (3.02m x 2.39m)
 Bathroom: 7'10 x 5'11 (2.39m x 1.80m)

OUTSIDE

Front, Side and Rear Gardens
 Garage and Off Road Parking

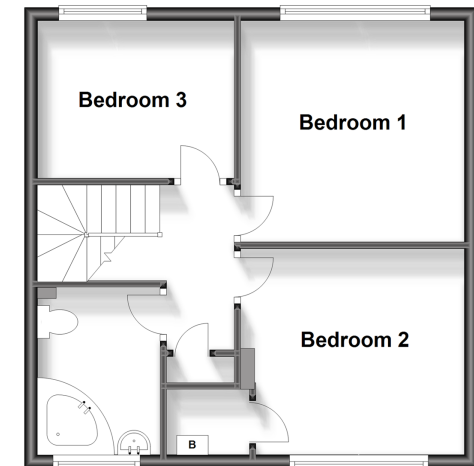
Ground Floor

Approx. 49.6 sq. metres (533.9 sq. feet)



First Floor

Approx. 43.2 sq. metres (465.2 sq. feet)



Call Bearsted - 01622 730955 ■ wardsofkent.co.uk

- Legal advice should be taken to verify fixtures/fittings, planning, alterations and/or lease details
- Appliances & services are untested, dimensions are approximate and floor plans are not to scale
- Through a Homewise Home For Life Plan people aged 60+ can secure this property for up to 59% less, by purchasing a Lifetime Lease.



12328651/20230714/SG/MC