



Price
£425,000

Freehold

4x  2x  1x 

**Edmett Way, Maidstone,
Kent, ME17**

OVER 60?

Secure this property
for up to **59% less!**

Wards
Helping you move forwards



Main features

- **Stunning example set over three floors with a huge main bedroom suite**
- **Garage partly converted to office**
- **Two tier garden to rear**
- **Perfectly positioned for access to local school, shops and supermarket**
- **Highly sought after style and position on modern development**

Accommodation

GROUND FLOOR

Entrance Hall: 14'11 x 7'4 (4.55m x 2.24m)
 Kitchen/Breakfast Room: 11'2 x 9'10 (3.41m x 3.00m)
 Cloakroom: 6'3 x 3'5 (1.91m x 1.04m)
 Lounge/Diner: 16'4 x 12'3 (4.98m x 3.74m)

FIRST FLOOR

Landing/Study Space
 Bedroom 2: 11'4 x 8'9 (3.46m x 2.67m)
 Bedroom 3: 12'1 x 6'11 (3.69m x 2.11m)
 Bedroom 4: 9'7 x 8'5 (2.92m x 2.57m)
 Bathroom: 8'3 x 6'2 (2.52m x 1.88m)

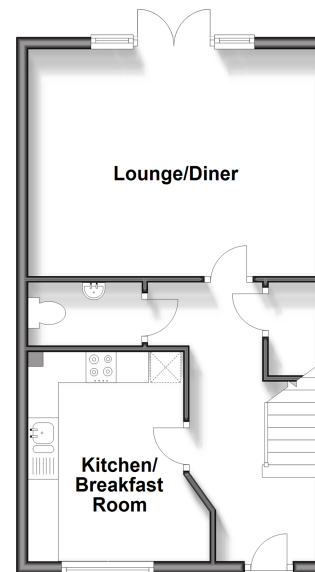
SECOND FLOOR

Bedroom 1: 19'3 x 15'7 (5.87m x 4.75m)
 Shower Room: 5'3 x 4'8 (1.60m x 1.42m)

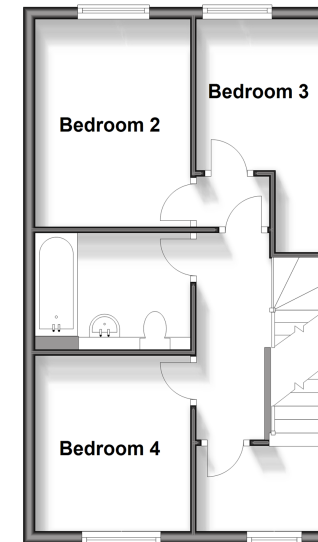
OUTSIDE

Front and Rear Gardens
 1/2 Garage: 10'0 x 10'0 (3.05m x 3.05m)
 Office: 9'2 x 9'0 (2.80m x 2.75m)

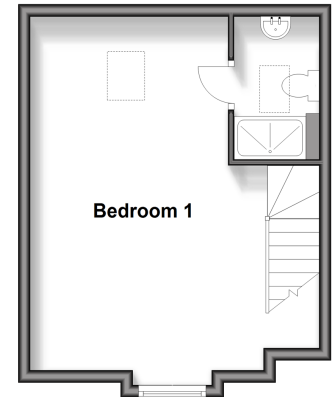
Ground Floor
 Approx. 40.0 sq. metres (430.9 sq. feet)



First Floor
 Approx. 40.7 sq. metres (437.7 sq. feet)



Second Floor
 Approx. 27.7 sq. metres (297.7 sq. feet)



Call Bearsted - 01622 730955 ■ wardsofkent.co.uk

■ Legal advice should be taken to verify fixtures/fittings, planning, alterations and/or lease details
 ■ Through a Homewise Home For Life Plan people aged 60+ can secure this property for up to 59% less, by purchasing a Lifetime Lease.

■ Appliances & services are untested, dimensions are approximate and floor plans are not to scale



12328668/20240201/SG/MC