



Price
£350,000

Freehold

2x  1x  2x 

**Ware Street, Bearsted,
Maidstone, Kent, ME14**

OVER 60?

Secure this property
for up to **59% less!**

Wards
Helping you move forwards



Main features

- **Character cottage close to Bearsted Green and village centre**
- **Modern internal condition throughout**
- **Fabulous rear garden**
- **Easy access to rail links and pubs/restaurants around the green**
- **Fabulous size and perfectly positioned to immerse yourself in village life**

Accommodation

SPLIT LEVEL GROUND FLOOR

Lounge: 12'4 x 10'11 (3.76m x 3.33m)

Dining Room: 12'2 x 12'1 (3.71m x 3.69m)

Kitchen: 12'6 x 5'1 (3.81m x 1.55m)

FIRST FLOOR

Landing

Bedroom 1: 12'5 x 11'0 (3.79m x 3.36m)

Bedroom 2: 9'4 x 9'4 (2.85m x 2.85m)

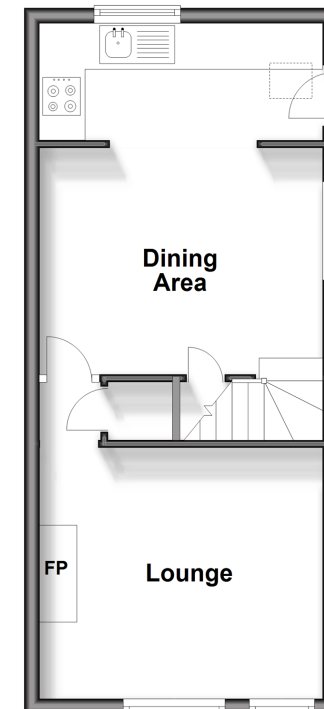
Bathroom: 9'0 x 6'0 (2.75m x 1.83m)

OUTSIDE

Rear Garden

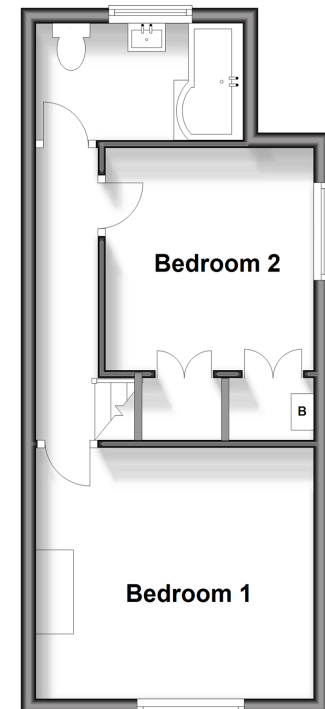
Split Level Ground Floor

Approx. 33.4 sq. metres (359.8 sq. feet)



First Floor

Approx. 31.2 sq. metres (336.1 sq. feet)



Call Bearsted - 01622 730955 ■ wardsofkent.co.uk

■ Legal advice should be taken to verify fixtures/fittings, planning, alterations and/or lease details
 ■ Through a Homewise Home For Life Plan people aged 60+ can secure this property for up to 59% less, by purchasing a Lifetime Lease.

■ Appliances & services are untested, dimensions are approximate and floor plans are not to scale



12328692/20240322/SG/MC