



**OVER 60?**

Secure this property  
for up to **59% less!**

**Price**  
**£475,000**

**Freehold**

3x  1x  2x 

**Cross View Cottages,  
Faversham Road,  
Lenham, Maidstone,  
Kent, ME17**

*Wards*  
Helping you move forwards





## Main features

- Fabulous character throughout retaining many period features
- Fantastic plot with parking and double garage
- Useful garden office/study
- Easy reach of Lenham village for shops, school and rail link
- Large garden to rear with deck, lawn and planted area

## Accommodation

### GROUND FLOOR

Kitchen: 9'1 x 7'11 (2.77m x 2.41m)

Dining Room: 11'11 x 10'11 (3.63m x 3.33m)

Lounge: 20'2 x 12'4 (6.15m x 3.76m)

### FIRST FLOOR

Landing

Bedroom 1: 12'0 x 11'0 (3.66m x 3.36m)

Bedroom 2: 10'11 x 10'5 up to fitted wardrobes (3.33m x 3.18m)

Bedroom 3: 9'3 x 8'2 (2.82m x 2.49m)

Family Bathroom: 9'4 x 8'2 (2.85m x 2.49m)

### OUTSIDE

Garden Office / Study

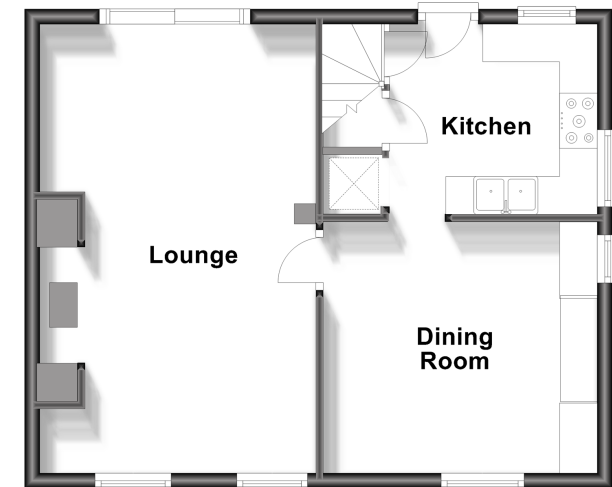
Rear Garden

Double Garage: 20'4 x 17'6 (6.20m x 5.34m)

Off Road Parking

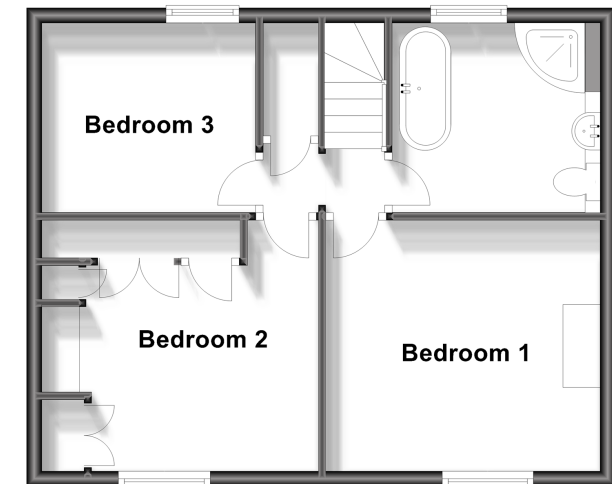
### Ground Floor

Approx. 43.6 sq. metres (469.4 sq. feet)



### First Floor

Approx. 44.4 sq. metres (478.3 sq. feet)



**Call Bearsted - 01622 730955 ■ [wardsofkent.co.uk](http://wardsofkent.co.uk)**

- Legal advice should be taken to verify fixtures/fittings, planning, alterations and/or lease details
- Appliances & services are untested, dimensions are approximate and floor plans are not to scale
- Through a Homewise Home For Life Plan people aged 60+ can secure this property for up to 59% less, by purchasing a Lifetime Lease.



12328696/20230915/MC/MC