

OVER 60?

Secure this property
for up to **59% less!**



Price

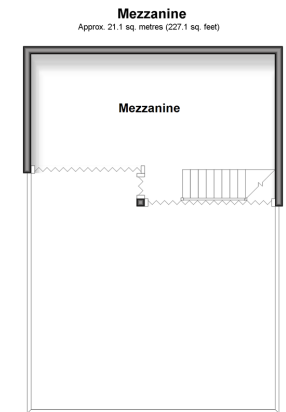
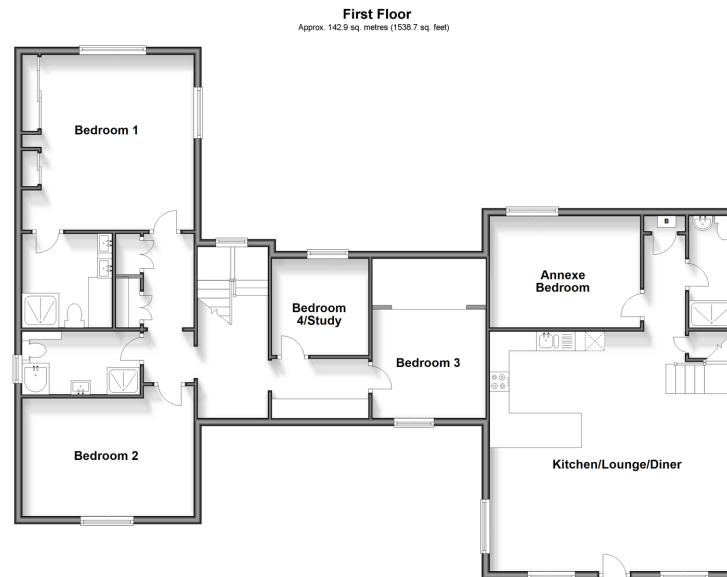
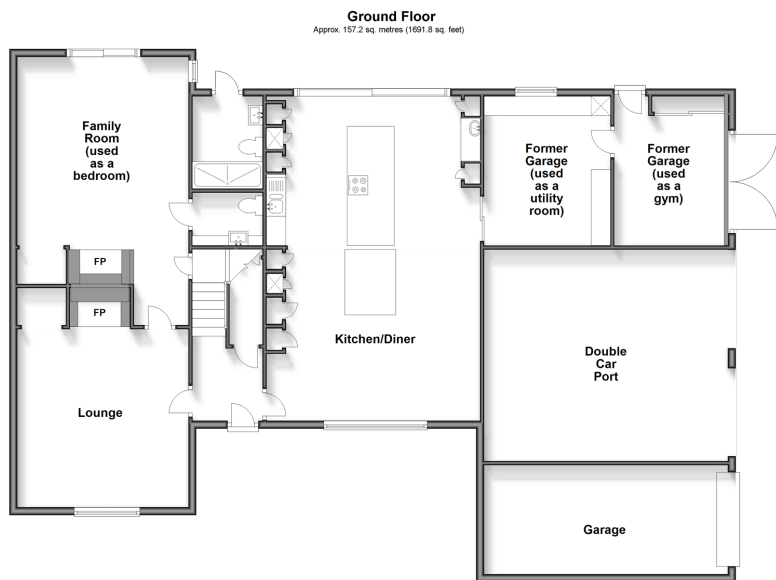
£1,595,000

Freehold

5x  4x  3x 

The Granary, Church Green, Upper Street,
Hollingbourne, Maidstone, Kent, ME17

Wards
Helping you move forwards



Accommodation

GROUND FLOOR

Entrance Hall
Lounge: 17'8 x 14'6 (5.39m x 4.42m)
Family Room: 18'3 x 14'7 (5.57m x 4.45m)
En-suite Toilet
Kitchen/Diner: 27'6 x 18'4 (8.39m x 5.59m)
Utility Room: 12'4 x 10'7 (3.76m x 3.23m)
Gym: 12'2 x 10'2 (3.71m x 3.10m)

FIRST FLOOR

Landing
Family Bathroom: 9'9 x 6'4 (2.97m x 1.93m)
Bedroom 1: 14'9 x 13'9 (4.50m x 4.19m)
En-suite Shower Room: 7'8 x 6'8 (2.34m x 2.03m)
Bedroom 2: 13'11 x 9'11 (4.24m x 3.02m)
Bedroom 3: 14'6 x 9'7 (4.42m x 2.92m)
Bedroom 4/Study: 8'7 x 7'11 (2.62m x 2.41m)

ANNEX

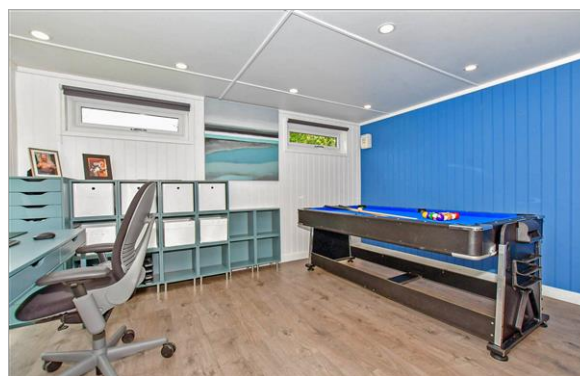
Kitchen/Lounge/Diner
Annex Bedroom
Shower Room

MEZZANINE

Mezzanine Room

OUTSIDE

Front and Rear Gardens
Office/Games Room: 22'5 x 13'11 (6.84m x 4.24m)
Shower Room
BBQ Hut: 11'8 x 11'8 (3.56m x 3.56m)
Gated Off Road Parking
Twin Carport
Garage



Main features

- Prominent position in the village within easy reach of school and rail link to London.
- Attractive blend of modern accommodation within period appearance.
- Wealth of features for family living and entertaining.
- Annex/additional accommodation currently let.
- Parking for several vehicles, some gated, plus garage and carport



Nearest Schools

Primary Schools: Hollingbourne Primary 0.2 miles, Leeds and Broomfield C of E Primary 1.6 miles, Harrietsham C of E Primary 1.8 miles
Secondary Schools: Swadelands School 3.6 miles, Sutton Valence School 4.0 miles



Transport Information

Train Stations: Hollingbourne 0.4 miles, Harrietsham 2.0 miles, Bearsted 2.8 miles



Address

The Granary, Church Green, Upper Street, Hollingbourne, Maidstone, Kent, ME17



Directions

For directions to this property please contact us.



Call Bearsted Branch 01622 730955 ■ wardsofkent.co.uk



■ Legal advice should be taken to verify fixtures/fittings, planning, alterations and/or lease details ■ Appliances & services are untested, dimensions are approximate and floor plans are not to scale
 ■ Through a Homewise Home For Life Plan people aged 60+ can secure this property for up to 59% less, by purchasing a Lifetime Lease.



12328705/20231123/SG/MC