



Price
£575,000

Freehold

3x  1x  2x 

**Otteridge Road,
Bearsted, Maidstone,
Kent, ME14**

OVER 60?

Secure this property
for up to **59% less!**

Wards
Helping you move forwards



Main features

- Desirable corner plot in central Bearsted location
- Detached garage plus block paved driveway
- Extended accommodation now offering 3 double bedrooms
- Quiet cul-de-sac position
- Short walk to shops, supermarket, pubs and restaurants

Accommodation

GROUND FLOOR

Entrance Hall

Lounge/Diner: 18'3 x 11'11 (5.57m x 3.63m)

Kitchen: 12'11 x 9'11 (3.94m x 3.02m)

Dining Room: 9'3 x 9'1 (2.82m x 2.77m)

Study: 9'1 x 8'9 (2.77m x 2.67m)

Conservatory: 20'7 x 8'5 (6.28m x 2.57m)

Bedroom 1: 11'10 x 11'1 (3.61m x 3.38m)

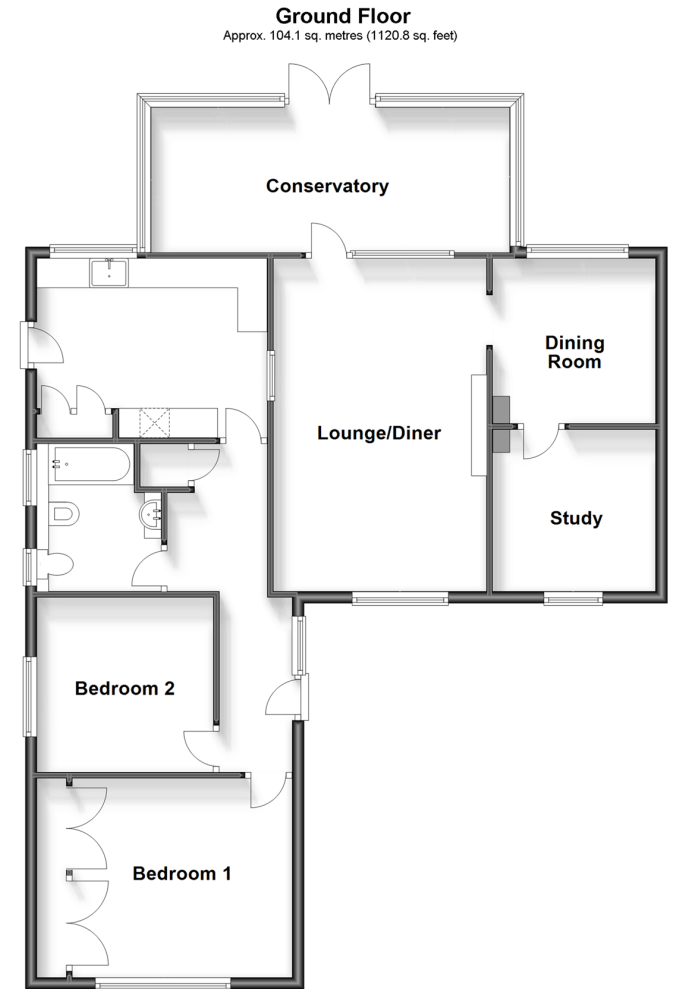
Bedroom 2: 9'11 x 9'8 (3.02m x 2.95m)

Bathroom : 8'4 x 7'0 (2.54m x 2.14m)

OUTSIDE

Garage and Driveway

Front and Rear Gardens



Call Bearsted - 01622 730955 ■ wardsofkent.co.uk

- Legal advice should be taken to verify fixtures/fittings, planning, alterations and/or lease details
- Appliances & services are untested, dimensions are approximate and floor plans are not to scale
- Through a Homewise Home For Life Plan people aged 60+ can secure this property for up to 59% less, by purchasing a Lifetime Lease.



12328707/20240321/BM/JW