



Price

£375,000

Freehold

3x  2x  1x 

**Bridger Way, Maidstone,
Kent, ME17**

Wards
Helping you move forwards



Main features

- Stunning condition "nearly new" build
- Converted half garage to study/office
- Charming enclosed rear garden
- Modern development close to school, shops and supermarkets
- Excellent position overlooking green park area and nature reserve

Accommodation

GROUND FLOOR

Hallway: 12'6 x 9'1 (3.81m x 2.77m)
 Kitchen/Diner: 15'8 x 10'9 (4.78m x 3.28m)
 Cloakroom: 6'2 x 3'5 (1.88m x 1.04m)
 Lounge: 15'8 x 9'6 (4.78m x 2.90m)

FIRST FLOOR

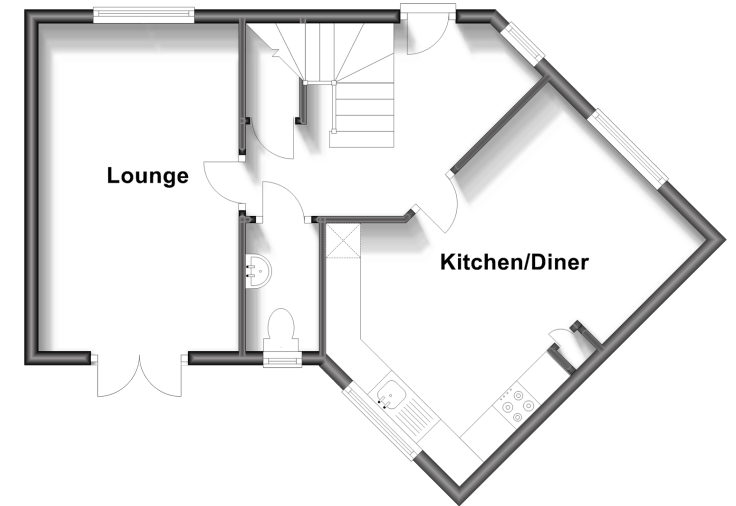
Landing
 Bedroom 1: 14'11 x 8'4 (4.55m x 2.54m)
 Bedroom 2: 11'11 x 6'10 (3.63m x 2.08m)
 Bedroom 3: 10'0 x 9'8 (3.05m x 2.95m)
 Shower Room: 7'9 x 3'3 (2.36m x 0.99m)
 Bathroom: 6'9 x 6'6 (2.06m x 1.98m)

OUTSIDE

Garage and Driveway
 Front and Rear Gardens

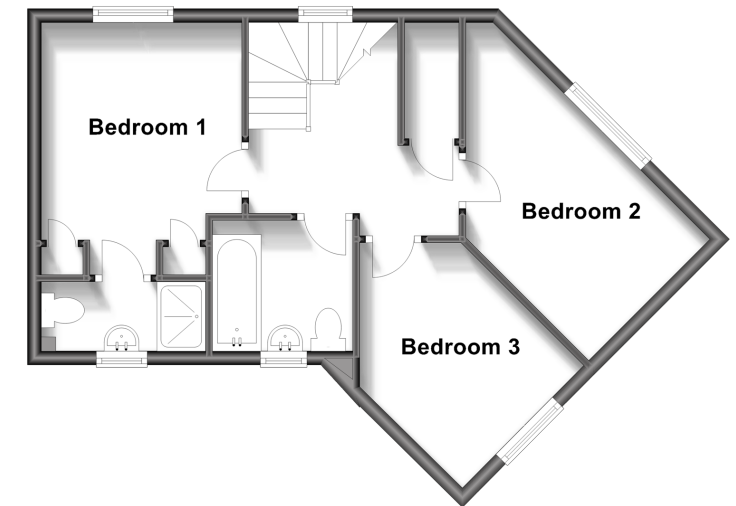
Ground Floor

Approx. 43.2 sq. metres (465.1 sq. feet)



First Floor

Approx. 43.3 sq. metres (466.1 sq. feet)



Call Bearsted - 01622 730955 ■ wardsofkent.co.uk

- Legal advice should be taken to verify fixtures/fittings, planning, alterations and/or lease details
- Appliances & services are untested, dimensions are approximate and floor plans are not to scale



12328716/20231002/SG/MC