



Price
£365,000

Freehold

2x  1x  1x 

**Bramley Crescent,
Bearsted, Maidstone,
Kent, ME15**

OVER 60?

Secure this property
for up to **59% less!**

Wards
Helping you move forwards



Main features

- Improved home with no chain involved
- Popular location close to local facilities and Mote Park
- Attractive shower room
- Conservatory overlooking garden
- Gas central heating

Accommodation

GROUND FLOOR

Entrance Hall

Bedroom 2: 9'0 x 8'4 (2.75m x 2.54m)

Bedroom 1: 12'2 x 10'2 (3.71m x 3.10m)

Lounge: 15'3 x 10'3 (4.65m x 3.13m)

Shower Room: 5'10 x 5'5 (1.78m x 1.65m)

Kitchen: 11'1 x 8'0 (3.38m x 2.44m)

Conservatory: 8'2 x 7'11 (2.49m x 2.41m)

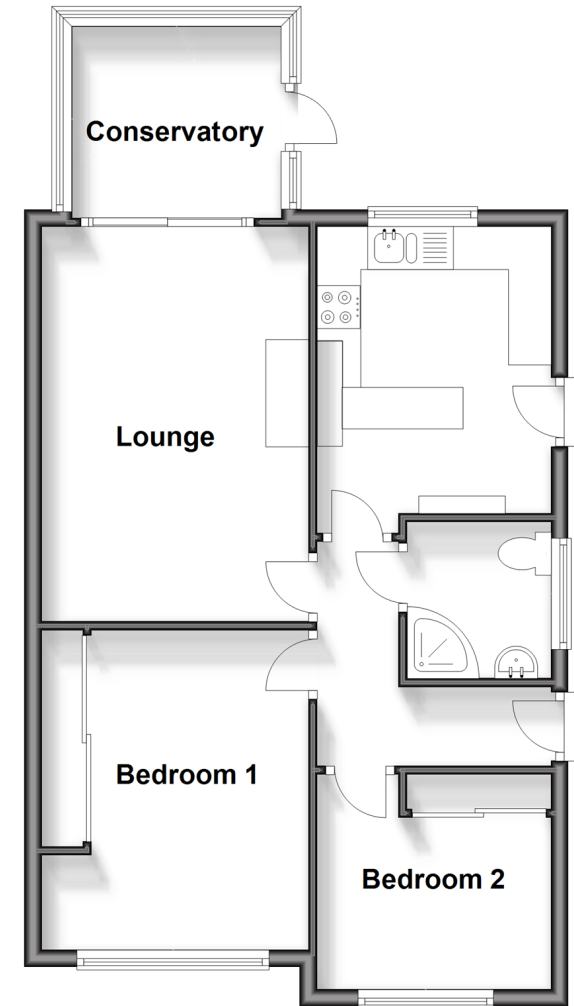
OUTSIDE

Front and Rear Gardens

Off Road Parking

Ground Floor

Approx. 56.9 sq. metres (612.1 sq. feet)



Call Bearsted - 01622 730955 ■ wardsofkent.co.uk

- Legal advice should be taken to verify fixtures/fittings, planning, alterations and/or lease details
- Appliances & services are untested, dimensions are approximate and floor plans are not to scale
- Through a Homewise Home For Life Plan people aged 60+ can secure this property for up to 59% less, by purchasing a Lifetime Lease.



12328729/20240222/SG/JW