



Guide Price
£565,000

Freehold

4x  2x  2x 

**Franklin Drive,
Weaving, Maidstone,
Kent, ME14**

OVER 60?

Secure this property
for up to **59% less!**

Wards
Helping you move forwards



Main features

- **Stunning internal condition**
- **Desirable double garage and huge parking area for multiple vehicles**
- **Modern kitchen/dining room with opportunity to extend STPP**
- **Cul-de-sac position with easy access to schools**
- **Study currently used as an additional bedroom**

Accommodation

GROUND FLOOR

Entrance Hall: 10'3 x 8'11 (3.13m x 2.72m)
 Cloakroom: 6'4 x 4'10 (1.93m x 1.47m)
 Kitchen/Breakfast Area: 25'4 x 7'11 (7.73m x 2.41m)
 Dining Room: 14'4 x 8'11 (4.37m x 2.72m)
 Lounge: 18'3 x 11'11 (5.57m x 3.63m)

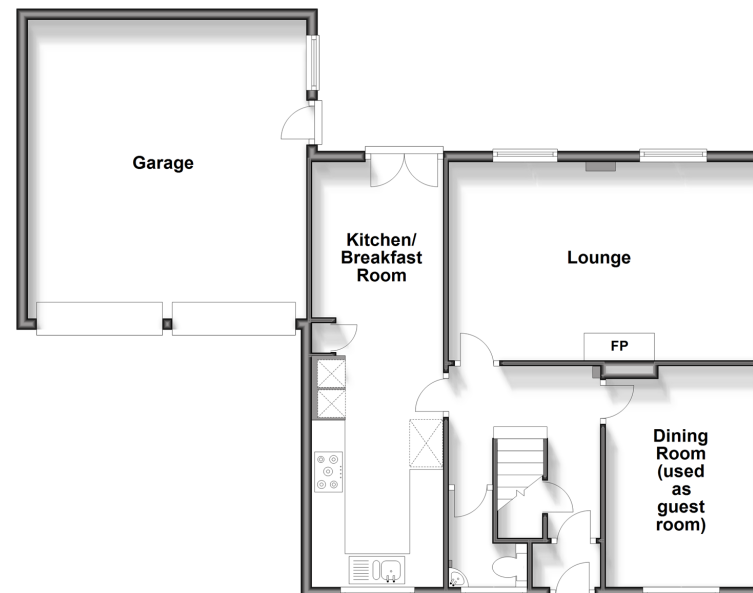
FIRST FLOOR

Landing
 Bedroom 1: 13'5 x 10'4 (4.09m x 3.15m)
 En-suite Shower Room: 6'7 x 5'8 (2.01m x 1.73m)
 Bedroom 2: 11'1 x 8'6 (3.38m x 2.59m)
 Bedroom 3: 9'1 x 8'0 (2.77m x 2.44m)
 Bedroom 4: 12'2 x 9'1 up to fitted wardrobes (3.71m x 2.77m)
 Bathroom: 8'2 x 7'6 (2.49m x 2.29m)

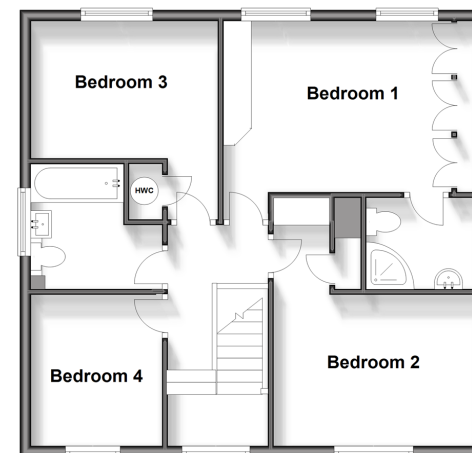
OUTSIDE

Front and Rear Gardens
 Double Garage: 17'7 x 16'10 (5.36m x 5.13m)
 Off Road Parking

Ground Floor
 Approx. 88.9 sq. metres (957.2 sq. feet)



First Floor
 Approx. 61.8 sq. metres (664.8 sq. feet)



Call Bearsted - 01622 730955 ■ wardsofkent.co.uk

- Legal advice should be taken to verify fixtures/fittings, planning, alterations and/or lease details
- Appliances & services are untested, dimensions are approximate and floor plans are not to scale
- Through a Homewise Home For Life Plan people aged 60+ can secure this property for up to 59% less, by purchasing a Lifetime Lease.