



OVER 60?

Secure this property
for up to **59% less!**

Price

£290,000

Freehold

2x  1x  1x 

**Murrain Drive,
Downswood, Maidstone,
Kent, ME15**

Wards
Helping you move forwards



Main features

- **Spacious home in end of cul-de-sac position**
- **Modern condition throughout**
- **Parking to front and additional spaces opposite**
- **Lovely garden perfect for a small family and manageable for investment**
- **Easy access to local shops and amenities with countryside walks also close by**

Accommodation

GROUND FLOOR

Entrance Hall

Kitchen/Breakfast Room: 11'11 x 8'11 (3.63m x 2.72m)

Lounge/Diner: 15'9 x 11'10 (4.80m x 3.61m)

FIRST FLOOR

Landing

Bedroom 2: 12'0 x 7'4 (3.66m x 2.24m)

Bedroom 1: 12'0 x 9'1 (3.66m x 2.77m)

Bathroom: 8'11 x 4'8 (2.72m x 1.42m)

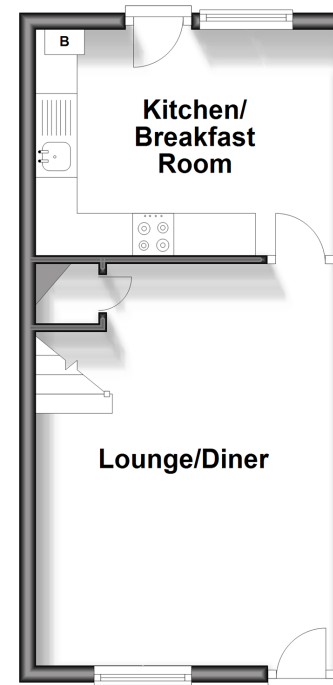
OUTSIDE

Off Road Parking

Front and Rear Gardens

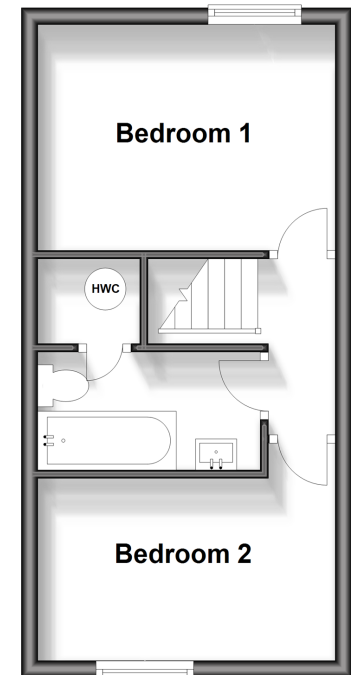
Ground Floor

Approx. 27.3 sq. metres (294.4 sq. feet)



First Floor

Approx. 27.3 sq. metres (294.4 sq. feet)



Call Bearsted - 01622 730955 ■ wardsofkent.co.uk

■ Legal advice should be taken to verify fixtures/fittings, planning, alterations and/or lease details
 ■ Through a Homewise Home For Life Plan people aged 60+ can secure this property for up to 59% less, by purchasing a Lifetime Lease.

■ Appliances & services are untested, dimensions are approximate and floor plans are not to scale



12328736/20240228/MC/MC