



Price
£350,000

Freehold

3x  1x  1x 

**Graveney Road,
Maidstone, Kent, ME15**

Wards
Helping you move forwards



Main features

- Improved and modernised family home with no onward chain
- Large lounge/diner with adjacent beautifully fitted kitchen
- Downstairs cloakroom
- Driveway and carport
- Conservatory overlooking garden

Accommodation

GROUND FLOOR

Entrance Hall

Cloakroom

Kitchen: 9'0 x 8'10 (2.75m x 2.69m)

Dining Area: 12'7 x 8'6 (3.84m x 2.59m)

Lounge Area: 12'3 x 11'4 (3.74m x 3.46m)

Conservatory: 10'11 x 9'11 (3.33m x 3.02m)

FIRST FLOOR

Landing

Bedroom 1: 11'5 x 11'4 (3.48m x 3.46m)

Bedroom 2: 10'10 x 9'4 (3.30m x 2.85m)

Bedroom 3: 8'3 x 6'11 (2.52m x 2.11m)

Bathroom: 6'1 x 6'1 (1.86m x 1.86m)

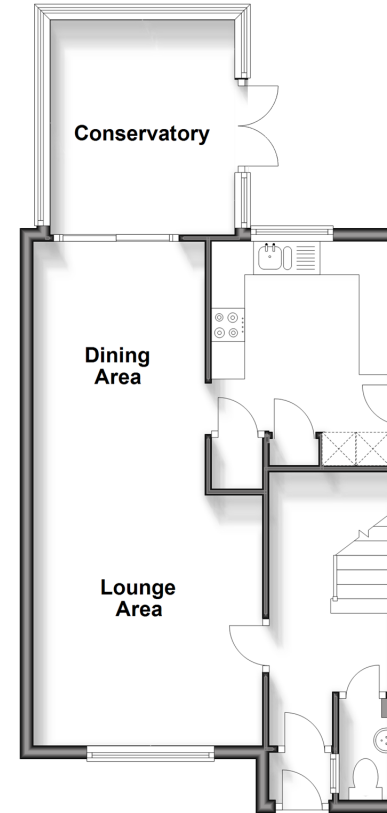
OUTSIDE

Front and Rear Gardens

Driveway and Carport

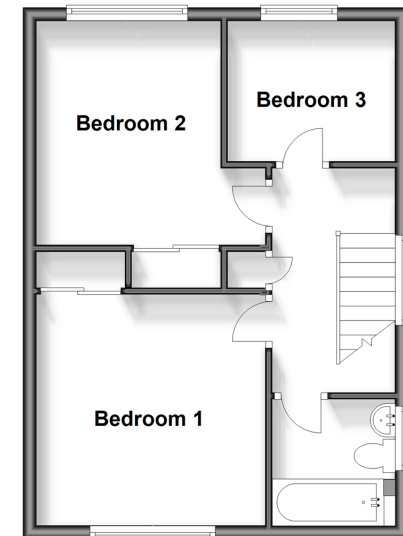
Ground Floor

Approx. 51.6 sq. metres (554.9 sq. feet)



First Floor

Approx. 40.7 sq. metres (437.6 sq. feet)



Call Bearsted - 01622 730955 ■ wardsofkent.co.uk

- Legal advice should be taken to verify fixtures/fittings, planning, alterations and/or lease details
- Appliances & services are untested, dimensions are approximate and floor plans are not to scale



12328737/20240129/SG/JW