



Price
£430,000

Freehold

4x  1x  1x 

**Saunders Field,
Maidstone, Kent, ME17**

Wards
Helping you move forwards



Main features

- **Stunning condition throughout with views over wooded area/nature reserve**
- **Charming end of cul-de-sac position**
- **Adjacent garage and double driveway**
- **Easy reach of local school, shops and supermarket**
- **Desirable modern village development on the Maidstone/Bearsted fringes**

Accommodation

GROUND FLOOR

Entrance Hall: 19'0 x 6'4 (5.80m x 1.93m)
 Lounge: 14'9 x 10'10 (4.50m x 3.30m)
 Cloakroom: 5'10 x 4'1 (1.78m x 1.25m)
 Kitchen/Diner: 17'8 x 11'2 (5.39m x 3.41m)
 Utility Room: 5'1 x 4'1 (1.55m x 1.25m)

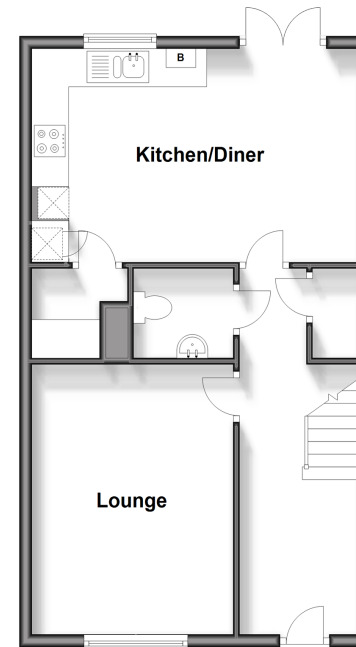
FIRST FLOOR

Landing
 Bedroom 1: 12'7 x 10'6 (3.84m x 3.20m)
 En-suite Shower Room: 6'9 x 3'10 (2.06m x 1.17m)
 Bedroom 2: 11'0 x 10'8 (3.36m x 3.25m)
 Bedroom 3: 11'4 x 7'1 at widest point (3.46m x 2.16m)
 Bedroom 4: 7'3 x 6'11 (2.21m x 2.11m)
 Bathroom: 6'9 x 6'4 (2.06m x 1.93m)

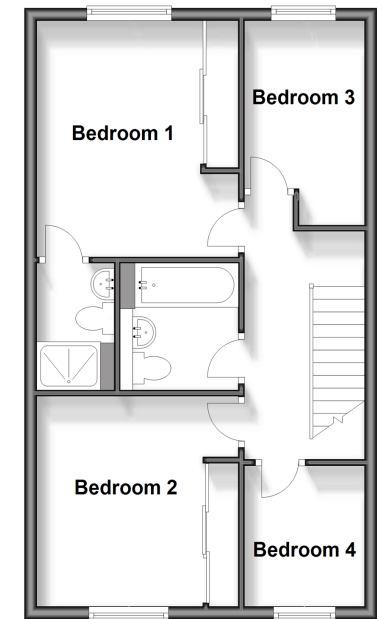
OUTSIDE

Front and Rear Gardens
 Garage and Off Road Parking

Ground Floor
 Approx. 49.7 sq. metres (534.5 sq. feet)



First Floor
 Approx. 49.6 sq. metres (533.5 sq. feet)



Call Bearsted - 01622 730955 ■ wardsofkent.co.uk

■ Legal advice should be taken to verify fixtures/fittings, planning, alterations and/or lease details

■ Appliances & services are untested, dimensions are approximate and floor plans are not to scale



12328753/20240417/JW/MC