



**OVER 60?**

Secure this property  
for up to **59% less!**

**Price**

**£450,000**

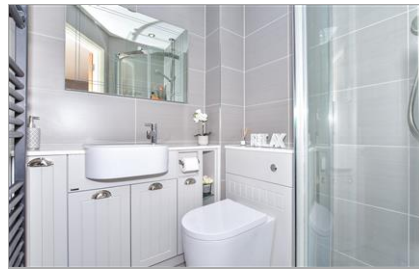
**Freehold**

4x  2x  1x 

**Willow Close,  
Harrietsham, Maidstone,  
Kent, ME17**

*Wards*  
Helping you move forwards





## Main features

- **Spacious modern build house in prime village position close to shops and supermarket**
- **Easy reach of local school**
- **Well connected for road and rail with main line link to London**
- **Fabulous internal condition throughout having been upgraded and modernised**
- **Useful conservatory used as study area**

## Accommodation

### GROUND FLOOR

Entrance Hall: 10'2 x 7'1 (3.10m x 2.16m)  
 Cloakroom: 5'9 x 3'2 (1.75m x 0.97m)  
 Kitchen: 10'1 x 7'8 (3.08m x 2.34m)  
 Lounge/Diner: 18'9 x 14'11 (5.72m x 4.55m)  
 Conservatory: 9'10 x 9'7 (3.00m x 2.92m)

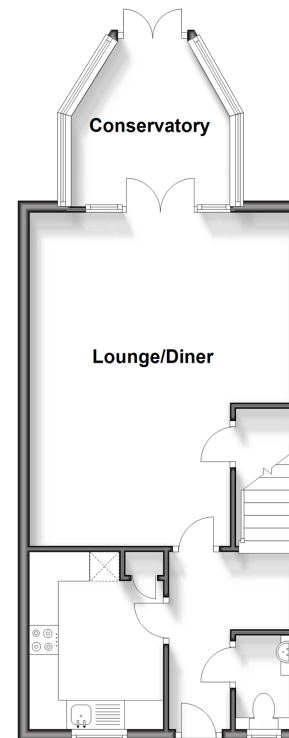
### FIRST FLOOR

Landing  
 Bedroom 1: 12'8 x 10'0 (3.86m x 3.05m)  
 En-suite Shower Room: 5'9 x 4'10 (1.75m x 1.47m)  
 Bedroom 2: 15'3 x 8'11 maximum (4.65m x 2.72m)  
 Bedroom 3: 9'1 x 7'2 (2.77m x 2.19m)  
 Bedroom 4: 7'7 x 7'6 (2.31m x 2.29m)  
 Bathroom : 6'11 x 5'8 (2.11m x 1.73m)

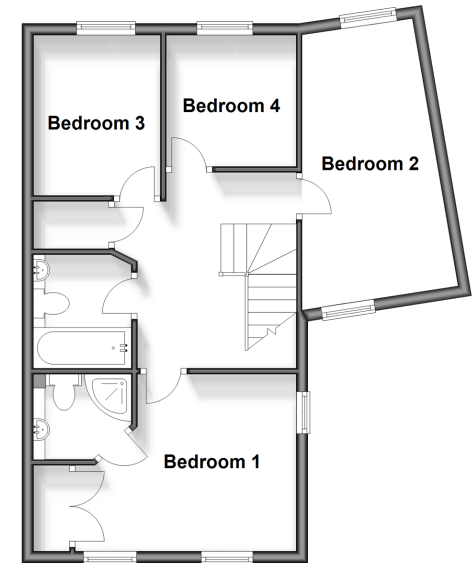
### OUTSIDE

Front and Rear Gardens  
 Garage: 17'6 x 8'6 (5.34m x 2.59m)  
 Carport and Off Road Parking

**Ground Floor**  
 Approx. 47.3 sq. metres (508.7 sq. feet)



**First Floor**  
 Approx. 51.5 sq. metres (554.6 sq. feet)



**Call Bearsted - 01622 730955 ■ [wardsofkent.co.uk](http://wardsofkent.co.uk)**

■ Legal advice should be taken to verify fixtures/fittings, planning, alterations and/or lease details  
 ■ Through a Homewise Home For Life Plan people aged 60+ can secure this property for up to 59% less, by purchasing a Lifetime Lease.

■ Appliances & services are untested, dimensions are approximate and floor plans are not to scale