



**OVER 60?**

Secure this property  
for up to **59% less!**

**Price**

**£500,000**

**Freehold**

4x  1x  1x 

**Cavendish Way,  
Maidstone, Kent, ME15**

*Wards*  
Helping you move forwards





## Main features

- **Stunning full refurb in central Bearsted**
- **Easy reach of schools, shops and supermarket**
- **Chain free with all works completed**
- **Versatile accommodation offering 4th bedroom or study/office to the ground floor**
- **Garage and parking in desirable setting close to all village amenities**

## Accommodation

### GROUND FLOOR

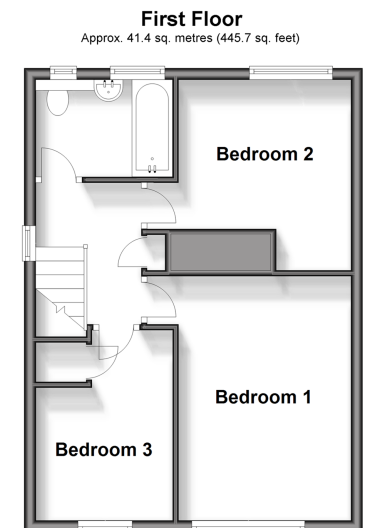
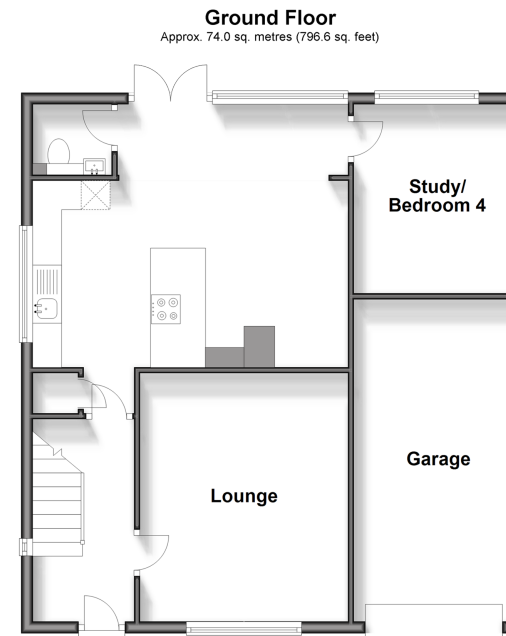
Entrance Hall: 12'2 x 5'9 (3.71m x 1.75m)  
 Lounge: 14'5 x 11'10 (4.40m x 3.61m)  
 Kitchen/Diner: 17'11 x 16'11 (5.46m x 5.16m)  
 Cloakroom: 4'7 x 4'0 (1.40m x 1.22m)  
 Study/Bedroom 4: 10'7 x 8'11 (3.23m x 2.72m)

### FIRST FLOOR

Landing  
 Bedroom 1: 14'4 x 10'0 (4.37m x 3.05m)  
 Bedroom 2: 10'10 x 9'11 (3.30m x 3.02m)  
 Bedroom 3: 10'11 x 7'9 (3.33m x 2.36m)  
 Bathroom: 7'8 x 5'5 (2.34m x 1.65m)

### OUTSIDE

Garage and Off Road Parking  
 Rear Garden



**Call Bearsted - 01622 730955 ■ [wardsofkent.co.uk](http://wardsofkent.co.uk)**

■ Legal advice should be taken to verify fixtures/fittings, planning, alterations and/or lease details  
 ■ Through a Homewise Home For Life Plan people aged 60+ can secure this property for up to 59% less, by purchasing a Lifetime Lease.

■ Appliances & services are untested, dimensions are approximate and floor plans are not to scale