



Price
£750,000

Freehold

4x  2x  2x 

**The Landway, Bearsted,
Maidstone, Kent, ME14**

OVER 60?

Secure this property
for up to **59% less!**

Wards
Helping you move forwards



Main features

- Situated in a prime location is this attractive character family home
- Spacious main bedroom suite with en-suite dressing room and en-suite shower room
- Adjacent double garage
- Featured galleried landing
- Corner plot position

Accommodation

Entrance Hall

Kitchen: 16'2 x 8'3 (4.93m x 2.52m)

Dining Room: 12'1 x 10'11 (3.69m x 3.33m)

Lounge: 21'8 x 12'0 (6.61m x 3.66m)

Conservatory: 11'11 x 9'2 (3.63m x 2.80m)

FIRST FLOOR

Landing/Study Area: 9'1 x 5'4 (2.77m x 1.63m)

Bedroom 1: 12'0 x 11'11 (3.66m x 3.63m)

Dressing Area: 10'10 x 10'3 (3.30m x 3.13m)

En-suite Bathroom: 12'8 x 7'1 (3.86m x 2.16m)

Bedroom 2: 10'11 x 9'11 (3.33m x 3.02m)

Bedroom 3: 11'11 x 8'5 (3.63m x 2.57m)

Bedroom 4: 8'4 x 8'1 (2.54m x 2.47m)

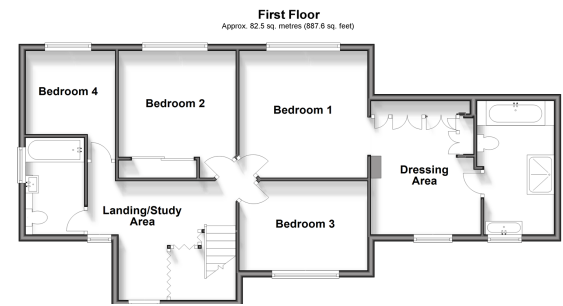
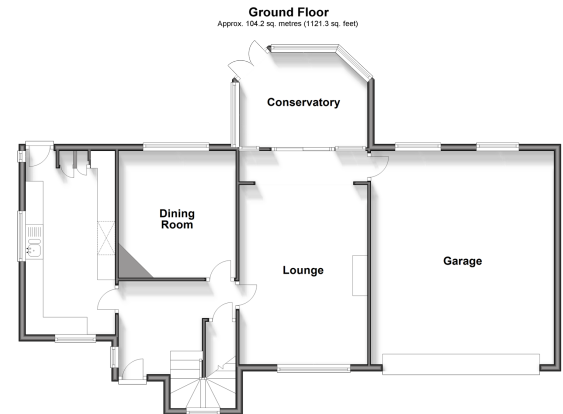
Bathroom

OUTSIDE

Front and Rear Gardens

Double Garage

In and Out Driveway



Call Bearsted - 01622 730955 ■ wardsofkent.co.uk

- Legal advice should be taken to verify fixtures/fittings, planning, alterations and/or lease details
- Through a Homewise Home For Life Plan people aged 60+ can secure this property for up to 59% less, by purchasing a Lifetime Lease.

- Appliances & services are untested, dimensions are approximate and floor plans are not to scale



12328760/20240322/SG/BM