



Price
£370,000

Freehold

3x  2x  1x 

**Shoebridge Drive,
Maidstone, Kent, ME17**

OVER 60?

Secure this property
for up to **59% less!**

Wards
Helping you move forwards



Main features

- Modern home situated in a sought after development
- Lounge/Diner with access to adjoining and useful double glazed conservatory
- Downstairs cloakroom
- En-suite shower room
- Modern fitted kitchen

Accommodation

GROUND FLOOR

Entrance Hall

Cloakroom

Kitchen: 11'3 x 10'2 (3.43m x 3.10m)

Lounge/Diner: 15'6 x 12'2 (4.73m x 3.71m)

Conservatory: 11'2 x 9'8 (3.41m x 2.95m)

FIRST FLOOR

Landing

Bedroom 1: 11'2 x 9'9 (3.41m x 2.97m)

En-suite Shower Room: 5'8 x 5'7 (1.73m x 1.70m)

Bedroom 2: 10'10 x 8'1 (3.30m x 2.47m)

Bedroom 3: 12'2 x 6'8 (3.71m x 2.03m)

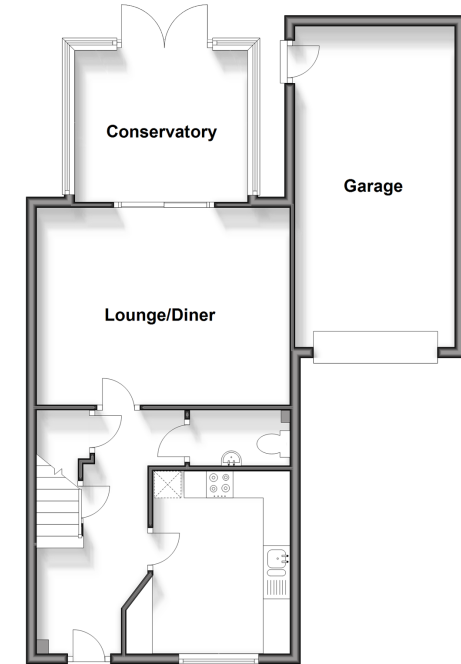
Bathroom: 6'8 x 5'6 (2.03m x 1.68m)

OUTSIDE

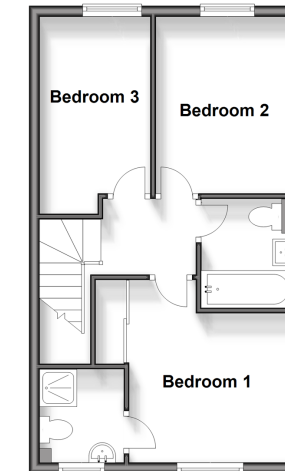
Front and Rear Gardens

Garage and Off Road Parking

Ground Floor
Approx. 67.5 sq. metres (726.7 sq. feet)



First Floor
Approx. 39.3 sq. metres (423.3 sq. feet)



Call Bearsted - 01622 730955 ■ wardsofkent.co.uk

- Legal advice should be taken to verify fixtures/fittings, planning, alterations and/or lease details
- Appliances & services are untested, dimensions are approximate and floor plans are not to scale
- Through a Homewise Home For Life Plan people aged 60+ can secure this property for up to 59% less, by purchasing a Lifetime Lease.



12328777/20240508/MC/JW