



**Price**  
**£330,000**

**Freehold**

3x  1x  2x 

**Willington Street,  
Maidstone, Kent, ME15**

**OVER 60?**

Secure this property  
for up to **59% less!**

*Wards*  
Helping you move forwards





## Main features

- **Fabulous size with rear extension off kitchen**
- **Detached garage plus space in front**
- **Close to local parade of shops, supermarket and school**
- **Generously proportioned throughout**
- **Private rear garden with rear access**

## Accommodation

### GROUND FLOOR

Hallway

Cloakroom

Lounge: 12'7 x 10'4 (3.84m x 3.15m)

Dining Area: 12'0 x 8'5 (3.66m x 2.57m)

Kitchen: 12'6 x 8'5 (3.81m x 2.57m)

Conservatory: 15'11 x 9'7 (4.85m x 2.92m)

### FIRST FLOOR

Landing

Bedroom 1: 12'4 x 8'9 (3.76m x 2.67m)

Bedroom 2: 12'2 x 9'8 (3.71m x 2.95m)

Bedroom 3: 9'0 x 7'4 (2.75m x 2.24m)

Shower Room: 8'2 x 5'9 (2.49m x 1.75m)

### OUTSIDE

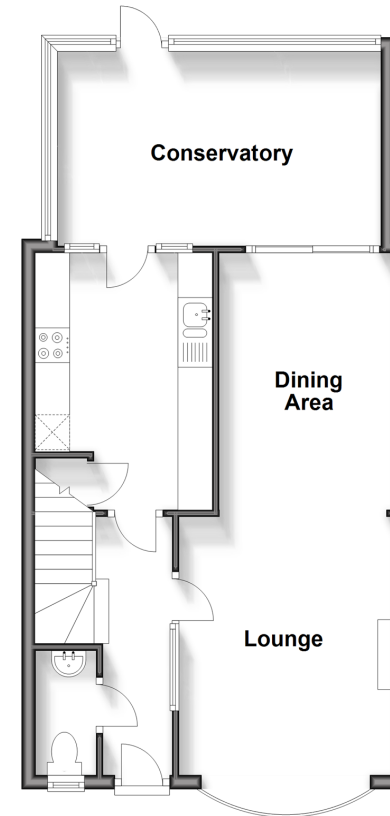
Garage

Front and Rear Gardens

Off Road Parking

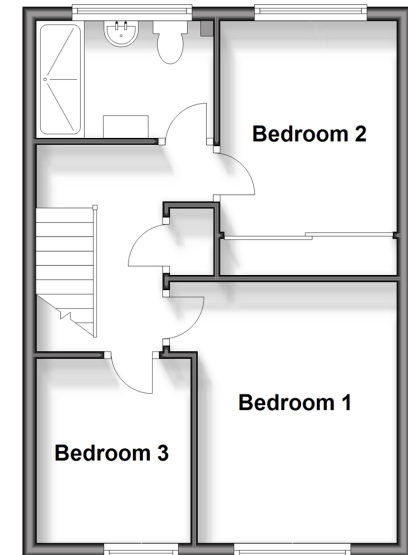
### Ground Floor

Approx. 53.6 sq. metres (576.9 sq. feet)



### First Floor

Approx. 39.4 sq. metres (423.6 sq. feet)



**Call Bearsted - 01622 730955 ■ [wardsofkent.co.uk](http://wardsofkent.co.uk)**

- If buying to let, the energy rating will need to be improved to at least 'E' rating before you can let the property
- Legal advice should be taken to verify fixtures/fittings, planning, alterations and/or lease details
- Appliances & services are untested, dimensions are approximate and floor plans are not to scale
- Through a Homewise Home For Life Plan people aged 60+ can secure this property for up to 59% less, by purchasing a Lifetime Lease.



12328778/20240418/SG/MC