



OVER 60?

Secure this property
for up to **59% less!**

Price

£300,000

Freehold

2x  1x  1x 

**Chiltern Close,
Downswood, Maidstone,
Kent, ME15**

Wards
Helping you move forwards



Main features

- Modern condition freehold property
- Parking to front and additional parking on deeds
- Recently landscaped rear garden
- Popular cul-de-sac setting near local shops and amenities
- Chain free

Accommodation

GROUND FLOOR

Entrance Hall

Lounge: 15'6 x 11'10 (4.73m x 3.61m)

Kitchen/Diner: 11'11 x 9'4 (3.63m x 2.85m)

FIRST FLOOR

Landing

Bedroom 1: 12'1 x 9'1 (3.69m x 2.77m)

Bedroom 2: 11'10 x 7'6 (3.61m x 2.29m)

Bathroom: 9'0 x 4'6 (2.75m x 1.37m)

OUTSIDE

Front and Rear Gardens

Allocated Parking

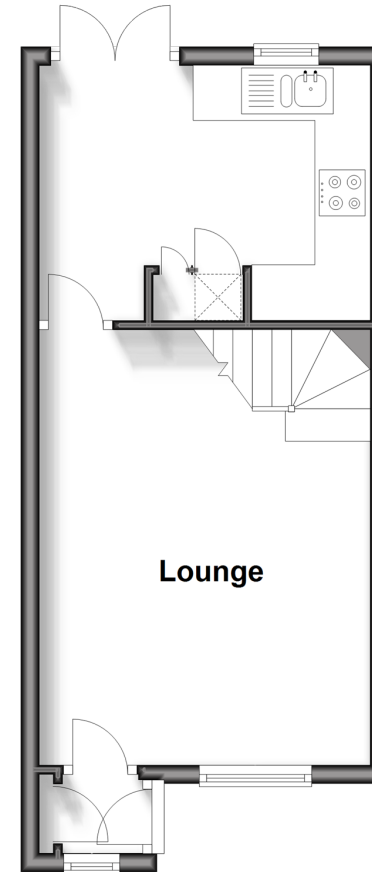
Off Road Parking

Call Bearsted - 01622 730955 ■ wardsofkent.co.uk

- Legal advice should be taken to verify fixtures/fittings, planning, alterations and/or lease details
- Appliances & services are untested, dimensions are approximate and floor plans are not to scale
- Through a Homewise Home For Life Plan people aged 60+ can secure this property for up to 59% less, by purchasing a Lifetime Lease.

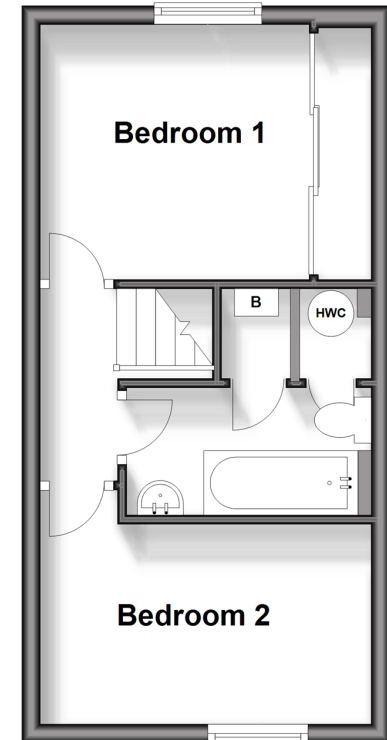
Ground Floor

Approx. 28.5 sq. metres (306.5 sq. feet)



First Floor

Approx. 27.5 sq. metres (296.0 sq. feet)



12328799/20240315/SG/MC