

OVER 60?

Secure this property
for up to **59% less!**



Price

£775,000

Freehold

4x  3x  2x 

Weavering Street, Weavering, Maidstone,
Kent, ME14

Wards
Helping you move forwards



Main features

- **Generously proportioned chalet style house**
- **Oversized garage and off-road parking**
- **2 x En-suite shower rooms, family bathroom and downstairs cloakroom**
- **Spacious lounge/diner plus study and separate snug/playroom**
- **Easy access to a range of schools and shops/supermarket**

Accommodation

GROUND FLOOR

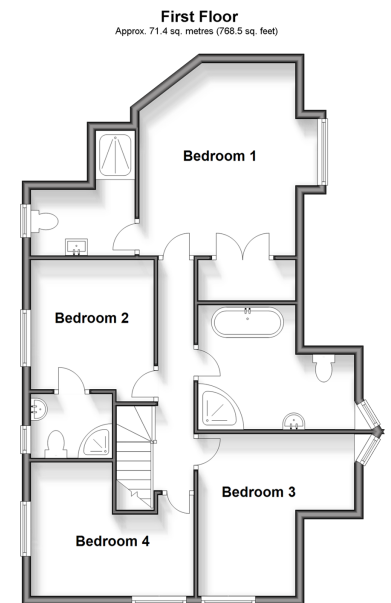
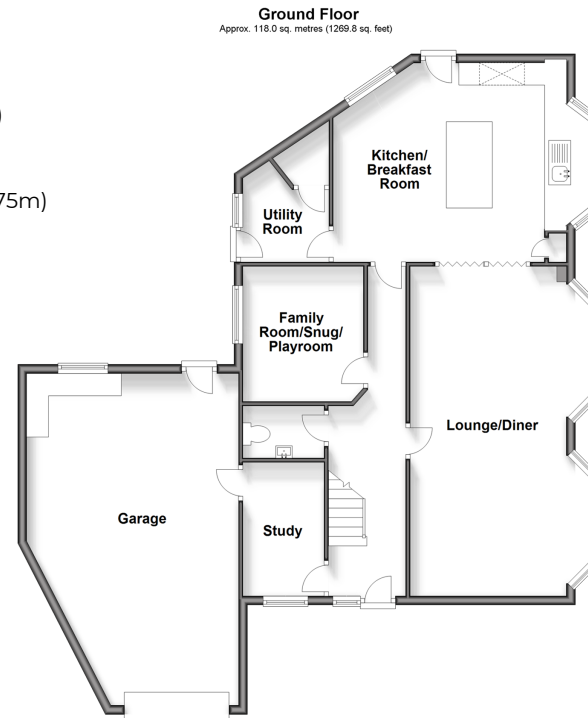
Entrance Hall
 Kitchen/Breakfast Room: 17'1 x 14'8 (5.21m x 4.47m)
 Lounge/Diner: 24'5 x 13'4 (7.45m x 4.07m)
 Utility Room: 8'1 x 6'8 (2.47m x 2.03m)
 Family Room/Snug/Playroom: 10'1 x 9'0 (3.08m x 2.75m)
 Study: 9'2 x 6'2 (2.80m x 1.88m)
 Cloakroom

FIRST FLOOR

Landing
 Bedroom 1: 14'9 x 13'11 (4.50m x 4.24m)
 En-suite Shower Room
 Dressing Room
 Bedroom 2: 9'4 x 9'4 (2.85m x 2.85m)
 En-suite Shower Room
 Bedroom 3: 12'1 x 11'6 (3.69m x 3.51m)
 Bedroom 4: 12'6 x 9'10 (3.81m x 3.00m)
 Family Bathroom: 11'8 x 9'2 (3.56m x 2.80m)

OUTSIDE

Front and Rear Gardens
 Garage and Workshop
 Off Road Parking



Call Bearsted - 01622 730955 ■ wardsofkent.co.uk

■ Legal advice should be taken to verify fixtures/fittings, planning, alterations and/or lease details
 ■ Through a Homewise Home For Life Plan people aged 60+ can secure this property for up to 59% less, by purchasing a Lifetime Lease.

■ Appliances & services are untested, dimensions are approximate and floor plans are not to scale



12328801/20240412/MC/MC