



Price

£180,000

**Share of
Freehold**

1x  1x  1x 

**Danefield Court, Church
Lane, Bearsted,
Maidstone, Kent, ME14**

Wards
Helping you move forwards



Main features

- Beautifully presented 1st floor flat situated in a sought after position
- Modern fitted bathroom
- Close to picturesque village green, main-line railway station, local shops and pubs
- Private parking
- For over 55 years of age

Accommodation

FIRST FLOOR

Lounge: 12'5 x 11'2 (3.79m x 3.41m)

Bedroom 1: 10'9 x 9'6 (3.28m x 2.90m)

Kitchen: 9'5 x 6'8 (2.87m x 2.03m)

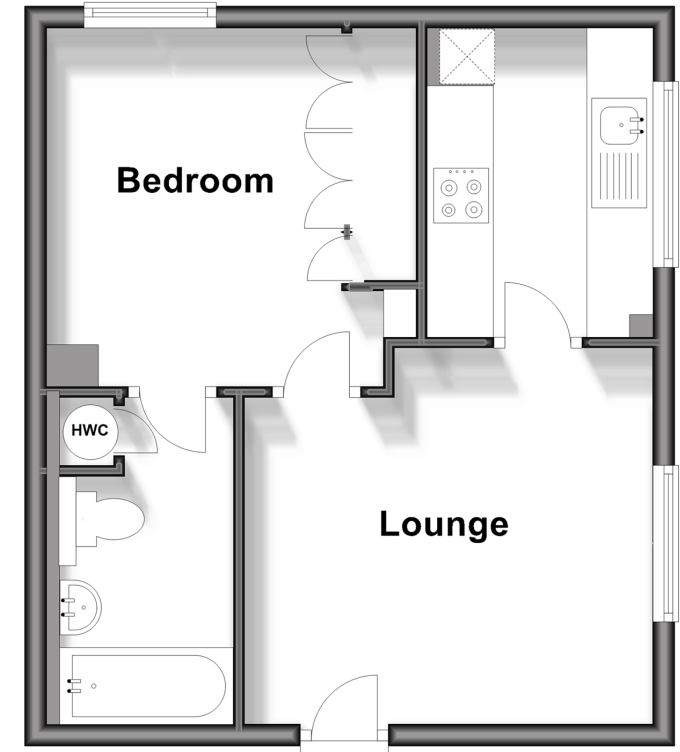
Bathroom: 10'2 x 5'2 (3.10m x 1.58m)

OUTSIDE

Communal Garden
Residents Parking

First Floor

Approx. 34.7 sq. metres (373.7 sq. feet)



Call Bearsted - 01622 730955 ■ wardsofkent.co.uk

- Legal advice should be taken to verify fixtures/fittings, planning, alterations and/or lease details
- Appliances & services are untested, dimensions are approximate and floor plans are not to scale



12328817/20240514/SG/JW