



OVER 60?

Secure this property
for up to **59% less!**

Price

£365,000

Freehold

3x  1x  1x 

**Harvesters Way,
Weaving, Maidstone,
Kent, ME14 4SH**

Wards
Helping you move forwards



Main features

- Situated in the popular **Weaving estate with no onward chain**
- **Downstairs cloakroom**
- **Front and rear gardens with own garage and further parking**
- **Close to schools and shops**
- **Double glazed and gas central heating**

Accommodation

GROUND FLOOR

Entrance Hall
Lounge: 16'4 x 10'2 (4.98m x 3.10m)
Kitchen/Diner: 14'4 x 9'6 (4.37m x 2.90m)
Cloakroom

FIRST FLOOR

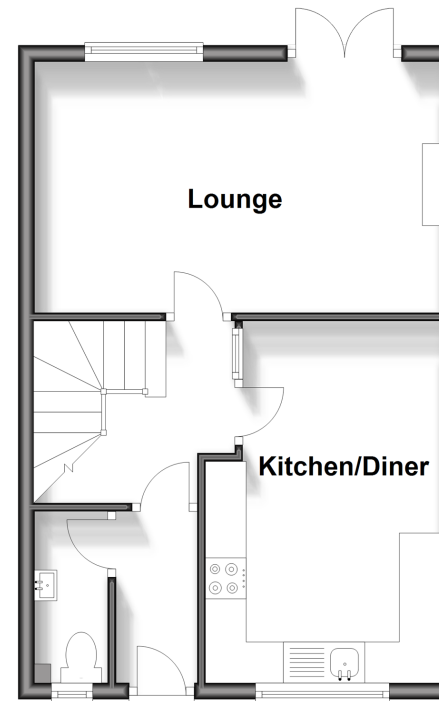
Landing
Bedroom 1: 10'2 x 8'3 (3.10m x 2.52m)
Bedroom 2: 11'5 x 8'4 (3.48m x 2.54m)
Bedroom 3: 10'3 x 7'8 (3.13m x 2.34m)
Bathroom: 7'6 x 6'3 (2.29m x 1.91m)

OUTSIDE

Front and Rear Gardens
Garage
Off Road Parking

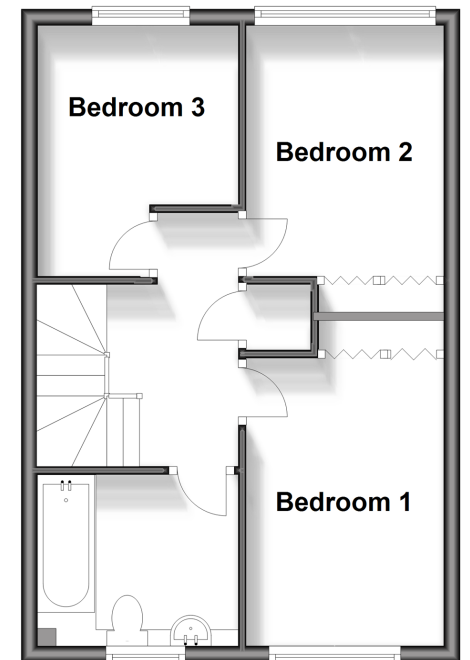
Ground Floor

Approx. 37.7 sq. metres (405.8 sq. feet)



First Floor

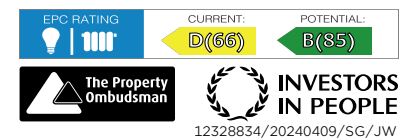
Approx. 37.9 sq. metres (408.1 sq. feet)



Call Bearsted - 01622 730955 ■ wardsofkent.co.uk

■ Legal advice should be taken to verify fixtures/fittings, planning, alterations and/or lease details
■ Through a Homewise Home For Life Plan people aged 60+ can secure this property for up to 59% less, by purchasing a Lifetime Lease.

■ Appliances & services are untested, dimensions are approximate and floor plans are not to scale



12328834/20240409/SG/JW