



Guide Price
£530,000

Freehold

3x  2x  2x 

**Pearl Way, Kings Hill,
West Malling, Kent,
ME19**

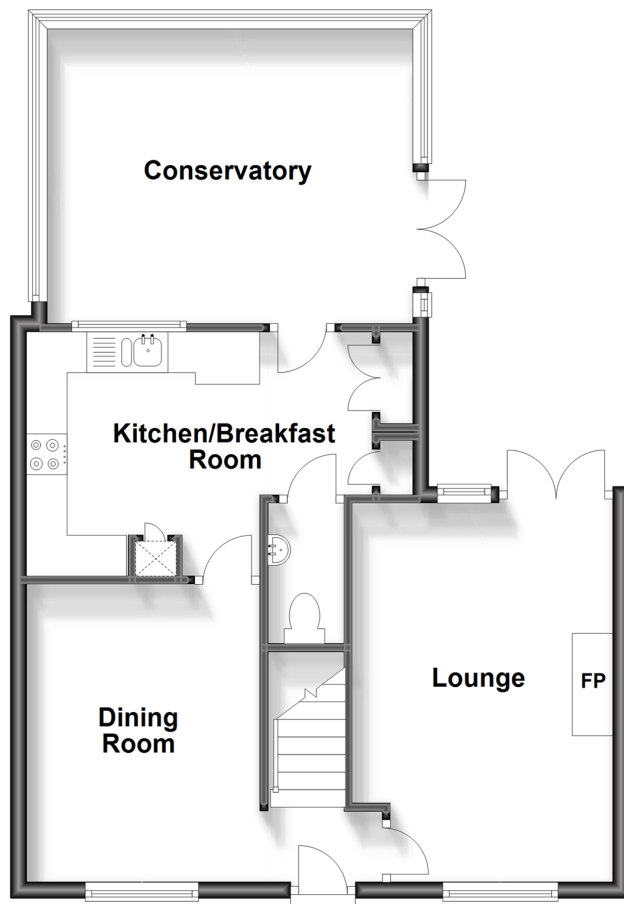
OVER 60?

Secure this property
for up to **59% less!**

Wards
Helping you move forwards

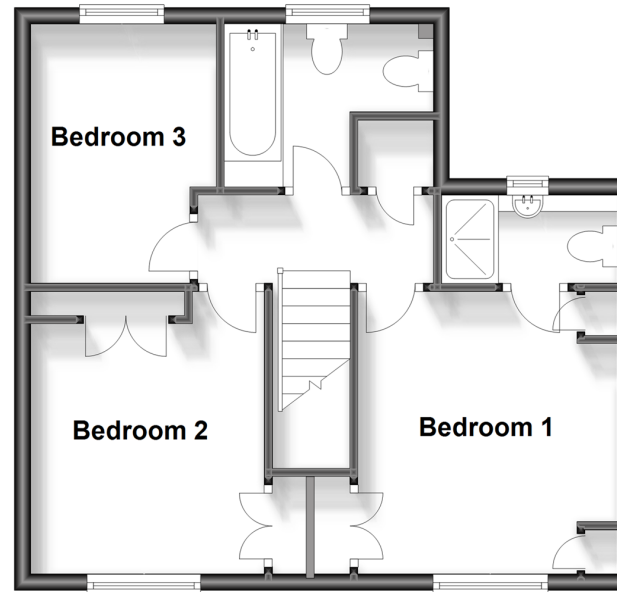
Ground Floor

Approx. 60.1 sq. metres (647.4 sq. feet)



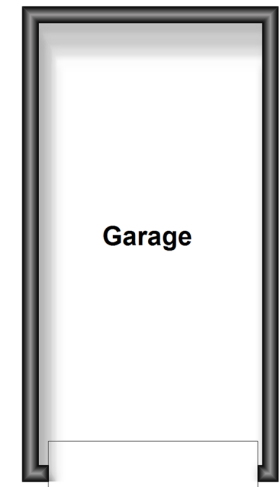
First Floor

Approx. 43.9 sq. metres (472.3 sq. feet)



Outbuilding

Approx. 0.0 sq. metres (0.0 sq. feet)



Accommodation

GROUND FLOOR

Entrance Hall

Cloakroom

Lounge: 15'6 x 10'0 (4.73m x 3.05m)

Dining Room: 11'10 x 8'10 (3.61m x 2.69m)

Kitchen/Breakfast Room: 13'6 x 10'0 (4.12m x 3.05m)

Conservatory: 14'0 x 11'6 (4.27m x 3.51m)

FIRST FLOOR

Landing

Bedroom 1: 11'5 x 11'2 (3.48m x 3.41m)

En-Suite Shower Room

Bedroom 2: 11'4 x 9'1 (3.46m x 2.77m)

Bedroom 3: 9'8 x 6'9 (2.95m x 2.06m)

Bathroom

OUTBUILDING

Garage & Driveway

OUTSIDE

Front & Rear Gardens



Main features

- Nicely proportioned modern detached family house
- A generous conservatory overlooking the secluded garden
- Quiet cul-de-sac setting with no passing traffic
- Central location for schools, sports park & Liberty Square
- Detached garage with 2 car driveway



Nearest Schools

Primary Schools: The Discovery School 0.4 miles, Valley Invicta Primary 0.6 miles, Kings Hill School 0.8 miles
Secondary Schools: St Augustine Academy 3.7 miles, Oakwood Park Grammar School 3.7 miles, Holmesdale Technology College 3.7 miles



Transport Information

Train Stations: Aylesford 3.0 miles, East Farleigh 3.0 miles, Yalding 3.1 miles



Address

Pearl Way, Kings Hill, West Malling, Kent, ME19



Directions

For directions to this property please contact us.



Wards
Helping you move forwards

Call Kings Hill Branch 01732 222211 ■ wardsofkent.co.uk



- Legal advice should be taken to verify fixtures/fittings, planning, alterations and/or lease details
- Appliances & services are untested, dimensions are approximate and floor plans are not to scale
- Through a Homewise Home For Life Plan people aged 60+ can secure this property for up to 59% less, by purchasing a Lifetime Lease.



12401014/20240425/SG/NR