



OVER 60?

Secure this property
for up to **59% less!**

Guide Price

£400,000

Freehold

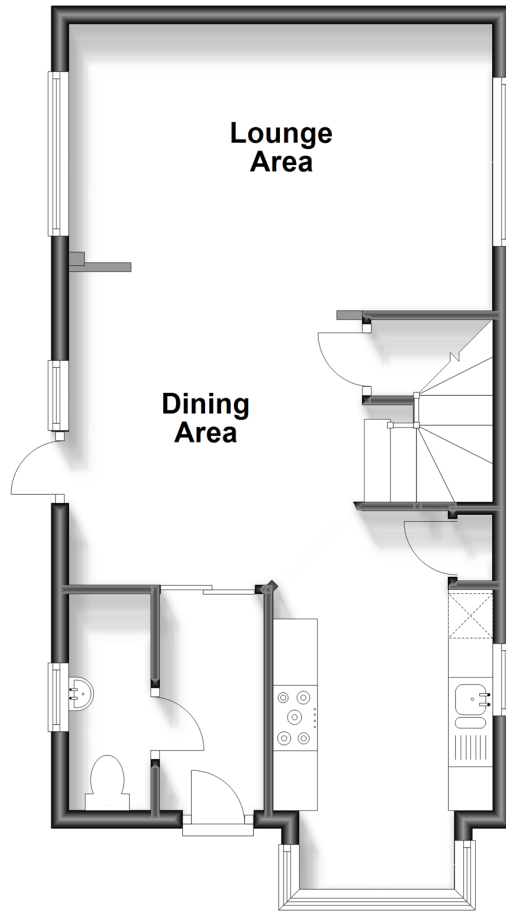
2x  2x  1x 

**Carlton Close, Kings Hill,
West Malling, Kent,
ME19**

Wards
Helping you move forwards

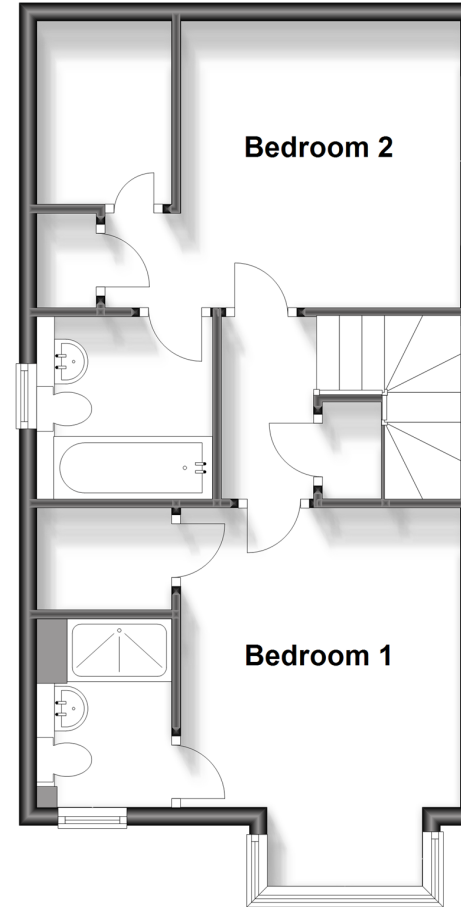
Ground Floor

Approx. 43.6 sq. metres (469.5 sq. feet)



First Floor

Approx. 44.0 sq. metres (473.2 sq. feet)



Accommodation

GROUND FLOOR

Entrance Hall

Cloakroom

Kitchen Area: 13'10 x 8'0 (4.22m x 2.44m)

Dining Area: 11'0 x 10'0 (3.36m x 3.05m)

Lounge Area: 15'0 x 10'0 (4.58m x 3.05m)

FIRST FLOOR

Landing

Bedroom 1: 13'9 x 10'0 (4.19m x 3.05m)

En-Suite Shower Room

Bedroom 2: 10'7 x 10'4 (3.23m x 3.15m)

En-Suite Bathroom

OUTSIDE

Rear Garden

Garage: 18'7 x 8'10 (5.67m x 2.69m)

Allocated Parking Space



Main features

- Ideally placed for Liberty square is this semi-detached house
- Private detached garage & allocated space
- Recently decorated throughout & immaculately clean
- Low maintenance landscaped garden
- Stylish open plan accommodation



Nearest Schools

Primary Schools: Kings Hill School 0.2 miles, Valley Invicta Primary 0.3 miles, The Discovery School 1.0 miles
Secondary Schools: Grange Park School 3.8 miles, The Malling School 4.0 miles, Wrotham School 4.5 miles



Transport Information

Train Stations: West Malling 3.0 miles, East Farleigh 3.5 miles, New Hythe 3.7 miles



Address

Carlton Close, Kings Hill, West Malling, Kent, ME19



Directions

For directions to this property please contact us.



Call Kings Hill Branch 01732 222211 ■ wardsofkent.co.uk



- Legal advice should be taken to verify fixtures/fittings, planning, alterations and/or lease details
- Appliances & services are untested, dimensions are approximate and floor plans are not to scale
- Through a Homewise Home For Life Plan people aged 60+ can secure this property for up to 59% less, by purchasing a Lifetime Lease.



12403636/20240325/NR/NR