



**Guide Price**  
**£325,000**

**Freehold**

2x  2x  1x 

**Hirschield Drive,  
Leybourne, West  
Malling, Kent, ME19**

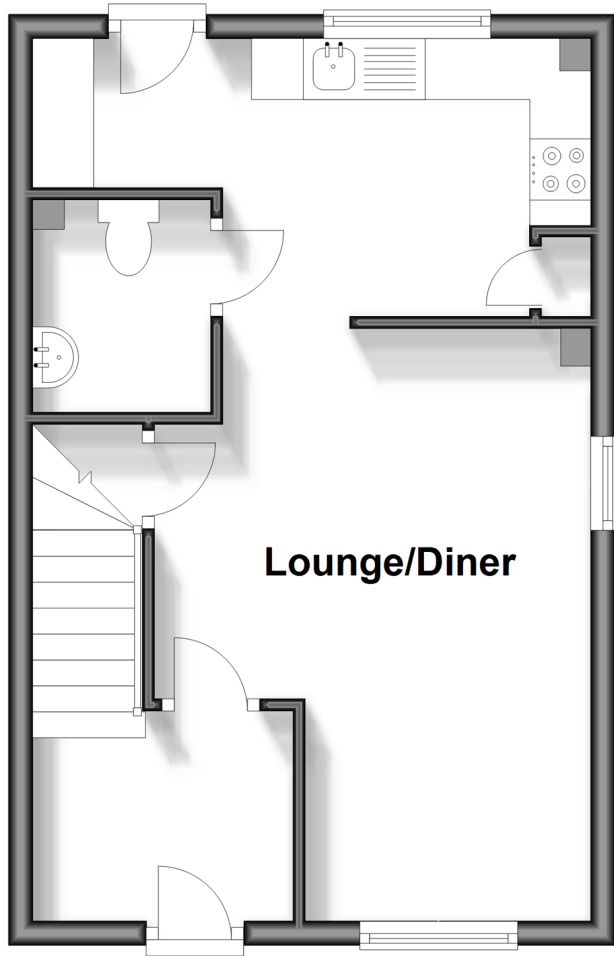
**OVER 60?**

Secure this property  
for up to **59% less!**

*Wards*  
Helping you move forwards

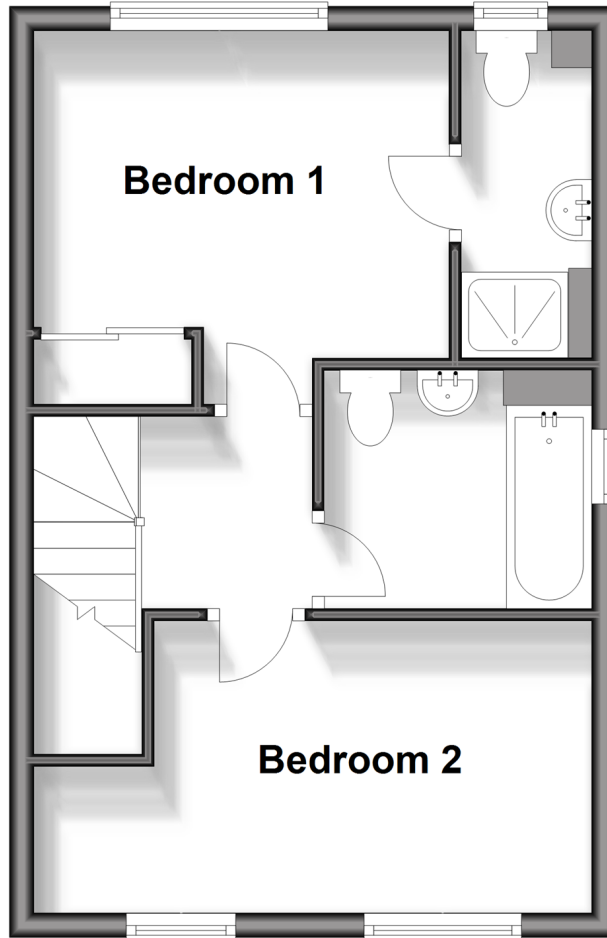
## Ground Floor

Approx. 33.0 sq. metres (355.7 sq. feet)



## First Floor

Approx. 33.0 sq. metres (355.7 sq. feet)



## Accommodation

### GROUND FLOOR

Entrance Hall

Cloakroom

Lounge/Diner: 15'8 x 11'8 (4.78m x 3.56m)

Kitchen: 15'1 x 7'4 (4.60m x 2.24m)

### FIRST FLOOR

Landing

Bedroom 1: 11'6 x 8'11 (3.51m x 2.72m)

En-Suite Shower Room

Bedroom 2: 11'9 x 8'11 (3.58m x 2.72m)

Bathroom

### OUTSIDE

Rear Garden

Driveway





## Main features

- Modern end of terrace house offering generous room sizes
- Superb presentation & move in ready
- Idyllic setting away from passing traffic overlooking trees & fields
- Garden & allocated parking
- Ideal first time purchase or investment



### Nearest Schools

Primary Schools: Ryarsh Primary 0.7 miles, Leybourne, St Peter and St Paul C of E Voluntary Aided Primary 0.7 miles, West Malling C of E Voluntary Controlled Primary and Language 0.9 miles



### Transport Information

Train Stations: West Malling 1.2 miles, New Hythe 1.9 miles, East Malling 2.0 miles



### Address

Hirschfield Drive, Leybourne, West Malling, Kent, ME19



### Directions

For directions to this property please contact us.





**Wards**  
Helping you move forwards

Call Kings Hill Branch 01732 222211 ■ [wardsofkent.co.uk](http://wardsofkent.co.uk)



■ Legal advice should be taken to verify fixtures/fittings, planning, alterations and/or lease details ■ Appliances & services are untested, dimensions are approximate and floor plans are not to scale  
■ Through a Homewise Home For Life Plan people aged 60+ can secure this property for up to 59% less, by purchasing a Lifetime Lease.



12404330/20240123/SG/NR