



**Guide Price**  
**£850,000**

**Freehold**

5x  4x  3x 

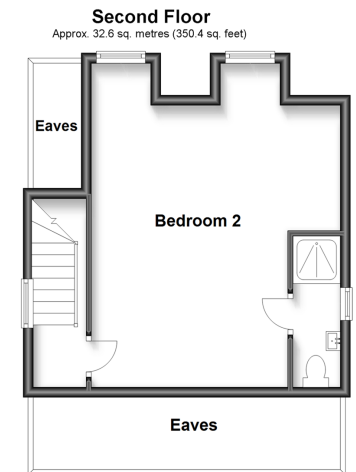
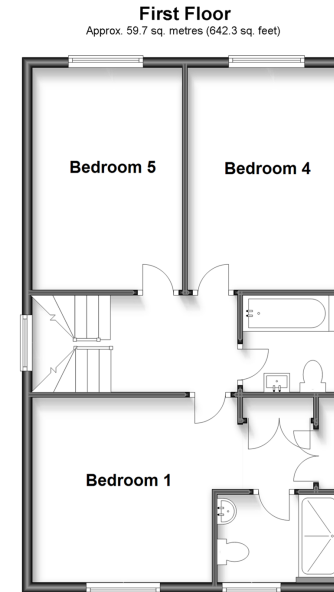
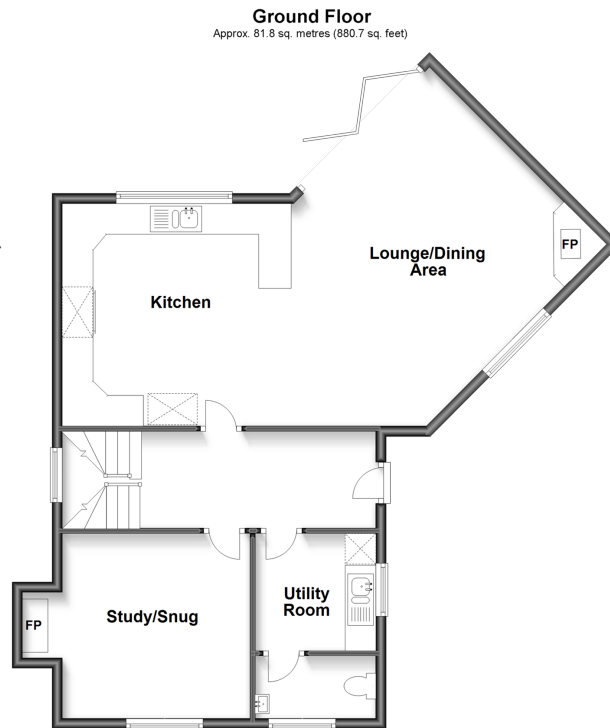
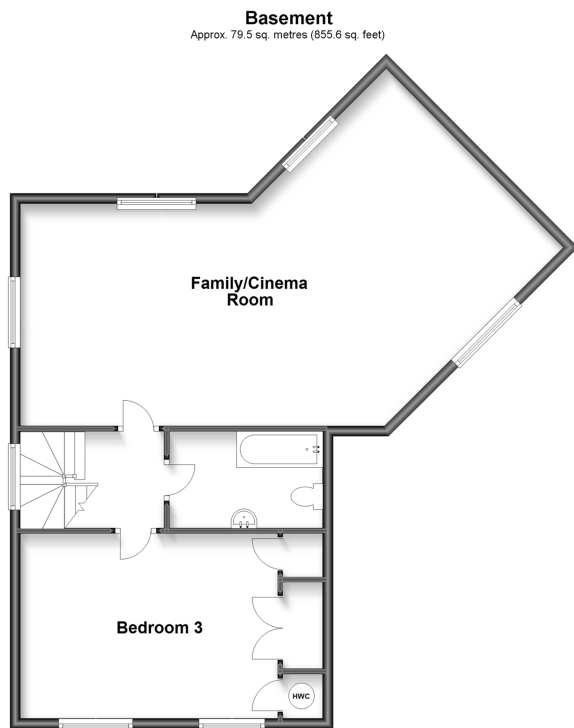
**East Street, Addington,  
West Malling, Kent,  
ME19**

**OVER 60?**

Secure this property  
for up to **59% less!**

*Wards*  
Helping you move forwards





## Accommodation

### BASEMENT

Family Room/Cinema Room: 34'7 x 14'1 (10.55m x 4.30m)

Bedroom 3: 16'6 x 11'7 (5.03m x 3.53m)

Bathroom

### GROUND FLOOR

Entrance Hall

Cloakroom

Kitchen: 14'6 x 14'3 (4.42m x 4.35m)

Lounge/Dining Area: 16'11 x 12'6 (5.16m x 3.81m)

Study/Snug: 11'11 x 11'8 (3.63m x 3.56m)

Utility Room: 7'10 x 7'7 (2.39m x 2.31m)

### FIRST FLOOR

Landing

Bedroom 1: 11'11 x 11'7 (3.63m x 3.53m)

En-Suite Shower Room

Bedroom 4: 14'4 x 9'9 (4.37m x 2.97m)

Bedroom 5: 14'4 x 9'8 (4.37m x 2.95m)

Family Bathroom

### SECOND FLOOR

Landing

Bedroom 2: 16'3 x 15'10 (4.96m x 4.83m)

En-Suite Shower Room

### OUTSIDE

Front & Rear Gardens

Gravel Driveway



## Main features

- Hugely impressive contemporary modern home across four floors
- Beautifully appointed and carefully considered accommodation
- Sensational space ideal for modern family living
- Idyllic village setting close to renowned schools
- Gravel driveway with space for garaging



### Nearest Schools

Primary Schools: Offham Primary 0.7 miles, Ryarsh Primary 0.8 miles, Trottiscliffe C of E Primary 1.3 miles  
Secondary Schools: Grange Park School 1.4 miles, The Malling School 2.6 miles, Holmesdale Technology College 2.7 miles



### Transport Information

Train Stations: West Malling 1.8 miles, East Malling 2.9 miles, New Hythe 3.3 miles



### Address

East Street, Addington, West Malling, Kent, ME19



### Directions

For directions to this property please contact us.





**Wards**  
Helping you move forwards

Call Kings Hill Branch 01732 222211 ■ [wardsofkent.co.uk](http://wardsofkent.co.uk)



■ Legal advice should be taken to verify fixtures/fittings, planning, alterations and/or lease details ■ Appliances & services are untested, dimensions are approximate and floor plans are not to scale  
■ Through a Homewise Home For Life Plan people aged 60+ can secure this property for up to 59% less, by purchasing a Lifetime Lease.



12404416/20230513/NR/NR