



**Guide Price**  
**£330,000**

**Freehold**

3x  2x  1x 

**Hawley Drive, West  
Malling, Kent, ME19**

**OVER 60?**

Secure this property  
for up to **59% less!**

*Wards*  
Helping you move forwards



## Main features

- Wonderful semi-detached modern house close to amenities
- Potential to extend (subject to planning permission)
- Ideal first time purchase or investment
- Peace of mind with remaining NHBC guarantee
- Chain free & priced to sell

## Accommodation

### GROUND FLOOR

Entrance Hall  
Cloakroom  
Lounge: 14'7 x 13'5 (4.45m x 4.09m)  
Kitchen: 11'3 x 7'8 (3.43m x 2.34m)

### FIRST FLOOR

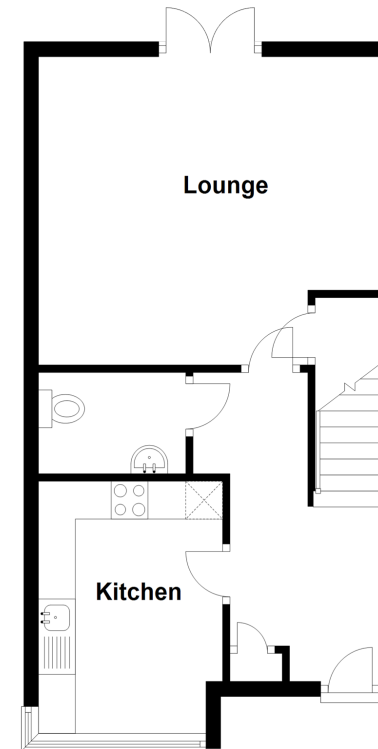
Landing  
Bedroom 1: 11'1 x 9'7 (3.38m x 2.92m)  
En-Suite Shower Room  
Bedroom 2: 10'1 x 7'8 (3.08m x 2.34m)  
Bedroom 3: 6'2 x 6'0 (1.88m x 1.83m)  
Bathroom

### OUTSIDE

Front & Rear Gardens  
Large Driveway

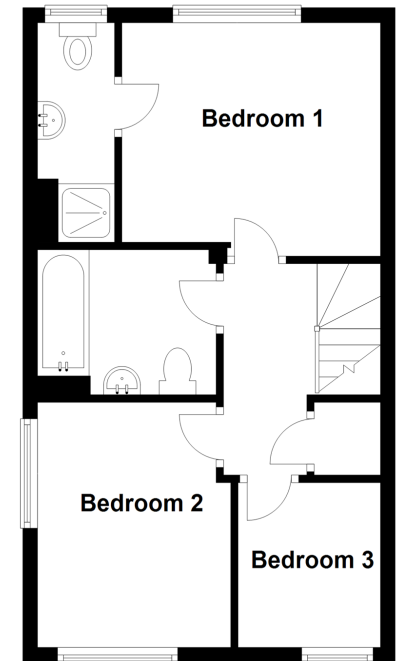
### Ground Floor

Approx. 40.1 sq. metres (431.5 sq. feet)



### First Floor

Approx. 38.4 sq. metres (412.9 sq. feet)



**Call Kings Hill - 01732 222211 ■ [wardsofkent.co.uk](http://wardsofkent.co.uk)**

- Legal advice should be taken to verify fixtures/fittings, planning, alterations and/or lease details
- Appliances & services are untested, dimensions are approximate and floor plans are not to scale
- Through a Homewise Home For Life Plan people aged 60+ can secure this property for up to 59% less, by purchasing a Lifetime Lease.



12404452/20230902/SG/NR