



Guide Price
£1,200,000

Freehold

5x  3x  4x 

**Alton Avenue, Kings Hill,
West Malling, Kent,
ME19**

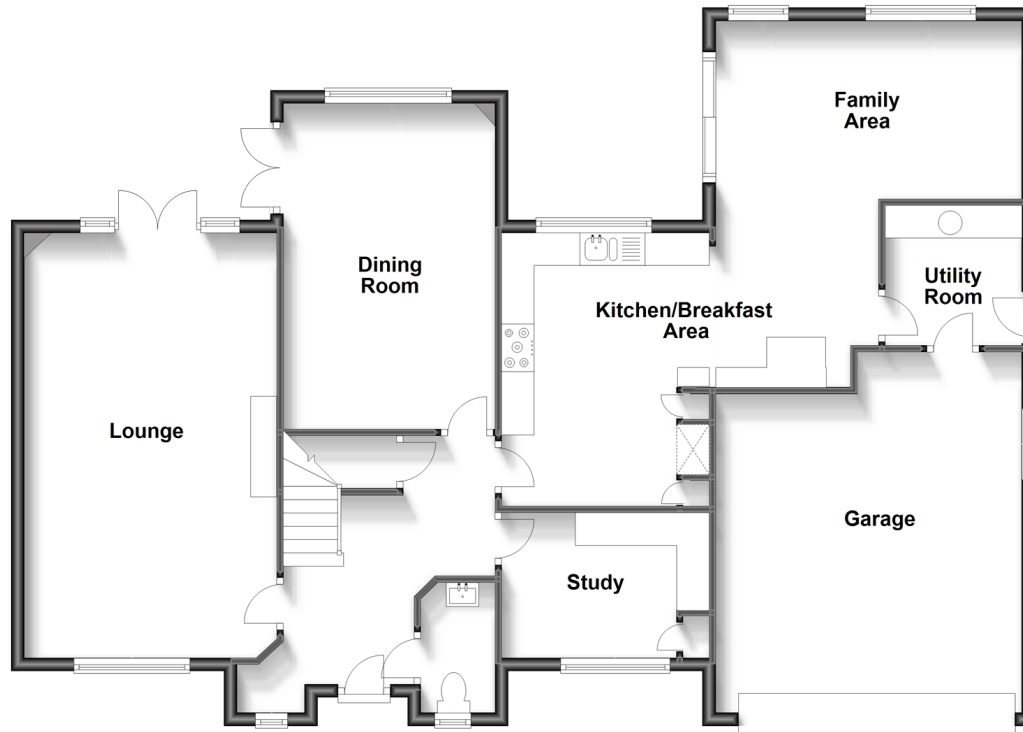
OVER 60?

Secure this property
for up to **59% less!**

Wards
Helping you move forwards

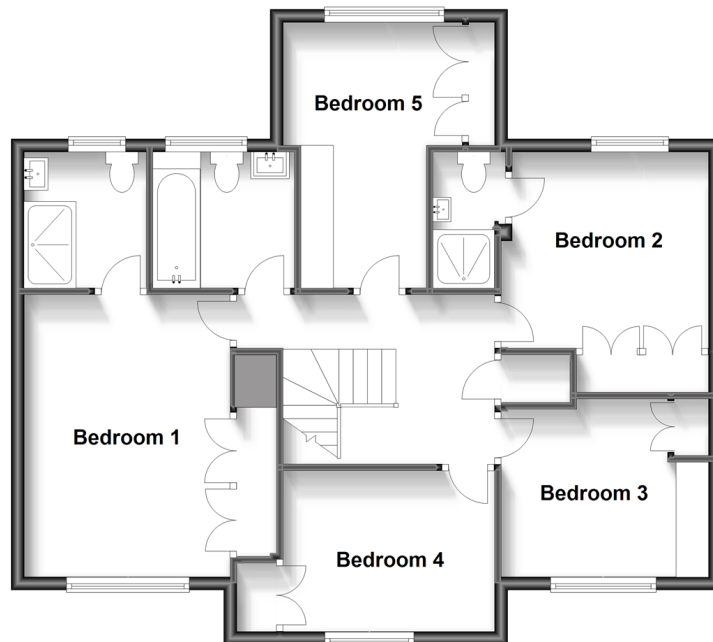
Ground Floor

Approx. 128.2 sq. metres (1379.7 sq. feet)



First Floor

Approx. 78.6 sq. metres (846.1 sq. feet)



Accommodation

GROUND FLOOR

Entrance Hall

Cloakroom

Lounge: 21'4 x 12'9 (6.51m x 3.89m)

Dining Room: 16'3 x 11'0 (4.96m x 3.36m)

Kitchen/Breakfast Room: 13'6 x 11'0 (4.12m x 3.36m)

Family Area: 15'6 x 9'0 (4.73m x 2.75m)

Study: 10'6 x 7'6 (3.20m x 2.29m)

Utility Room

FIRST FLOOR

Landing

Bedroom 1: 14'2 x 10'8 (4.32m x 3.25m)

En-Suite Shower Room

Bedroom 2: 10'7 x 9'11 (3.23m x 3.02m)

En-Suite Shower Room

Bedroom 3: 13'3 x 10'10 (4.04m x 3.30m)

Bedroom 4: 10'4 x 8'1 (3.15m x 2.47m)

Bedroom 5: 10'7 x 8'11 (3.23m x 2.72m)

Bathroom

OUTSIDE

Front & Rear Gardens

Double Garage

Large Driveway



Main features

- An impressive detached family home in a secluded & prestigious location
- Boasting golf course views in a much sought after enclave
- Large landscaped garden including garden building with hot tub & home gym
- Double garage & ample parking for 4 cars
- Close to local amenities & in catchment area for local schools



Nearest Schools

Primary Schools: Kings Hill School 0.1 miles, Valley Invicta Primary 0.4 miles, The Discovery School 0.7 miles
Secondary Schools: The Malling School 2.0 miles, Grange Park School 2.3 miles, Aylesford School - Sports College 3.4 miles



Transport Information

Train Stations: Watlington 1.4 miles, West Malling 1.6 miles, East Malling 1.9 miles



Address

Alton Avenue, Kings Hill, West Malling, Kent, ME19



Directions

For directions to this property please contact us.



Wards
Helping you move forwards

Call Kings Hill Branch 01732 222211 ■ wardsofkent.co.uk



■ Legal advice should be taken to verify fixtures/fittings, planning, alterations and/or lease details ■ Appliances & services are untested, dimensions are approximate and floor plans are not to scale
■ Through a Homewise Home For Life Plan people aged 60+ can secure this property for up to 59% less, by purchasing a Lifetime Lease.



12404515/20230901/CH/NR