



**Guide Price**  
**£350,000**

**Freehold**

2x  1x  1x 

**Rose Terrace, Teston  
Road, Offham, West  
Malling, Kent, ME19**

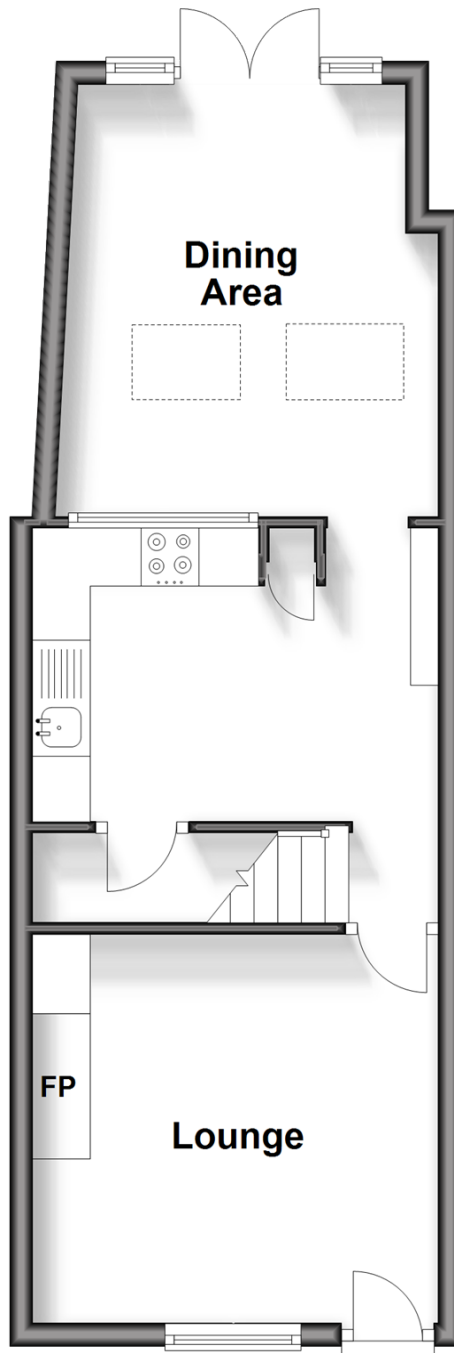
**OVER 60?**

Secure this property  
for up to **59% less!**

*Wards*  
Helping you move forwards

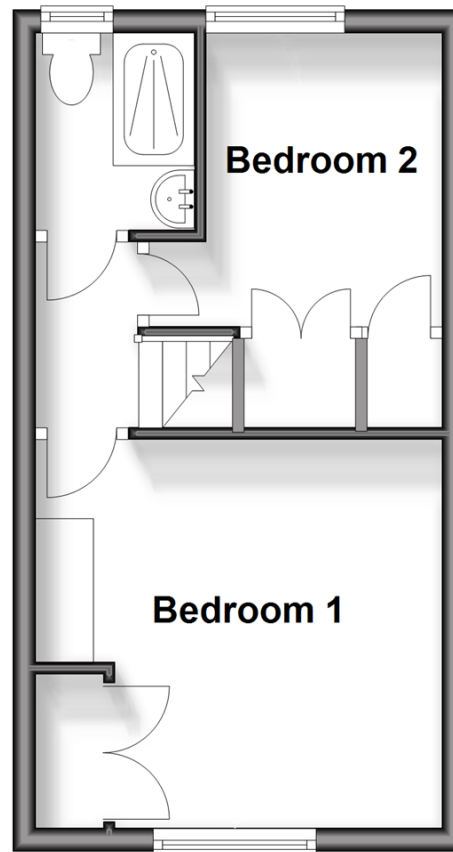
## Ground Floor

Approx. 36.0 sq. metres (387.4 sq. feet)



## First Floor

Approx. 24.3 sq. metres (261.4 sq. feet)



## Accommodation

### GROUND FLOOR

Lounge: 11'7 x 10'11 (3.53m x 3.33m)

Kitchen: 11'7 x 8'5 (3.53m x 2.57m)

Dining Area: 12'2 x 10'10 (3.71m x 3.30m)

### FIRST FLOOR

Landing

Bedroom 1: 11'8 x 11'5 (3.56m x 3.48m)

Bedroom 2: 8'9 x 6'8 (2.67m x 2.03m)

Shower Room

### OUTSIDE

Front & Rear Gardens

Driveway





## Main features

- A high specification and very stylish period cottage
- Provision for electric car charge point
- Beautifully presented & extended accommodation
- Landscaped sunny aspect rear garden
- Personal parking space



### Nearest Schools

Primary Schools: Offham Primary 0.4 miles, West Malling C of E Voluntary Controlled Primary and Language 1.3 miles, Valley Invicta Primary 1.5 miles  
Secondary Schools: Grange Park School 1.8 miles, The Malling School 2.7 miles, Wrotham School 2.8 miles



### Transport Information

Train Stations: West Malling 1.8 miles, East Malling 2.9 miles, Borough Green & Wrotham 2.9 miles



### Address

Rose Terrace, Teston Road, Offham, West Malling, Kent, ME19



### Directions

For directions to this property please contact us.





*Wards*  
Helping you move forwards

Call Kings Hill Branch 01732 222211 ■ [wardsofkent.co.uk](http://wardsofkent.co.uk)



■ Legal advice should be taken to verify fixtures/fittings, planning, alterations and/or lease details ■ Appliances & services are untested, dimensions are approximate and floor plans are not to scale  
■ Through a Homewise Home For Life Plan people aged 60+ can secure this property for up to 59% less, by purchasing a Lifetime Lease.



12404632/20240511/NR/NR