



Guide Price

£498,500

Freehold

4x  1x  2x 

**Sadow Place, Kings
Hill, West Malling, Kent,
ME19**

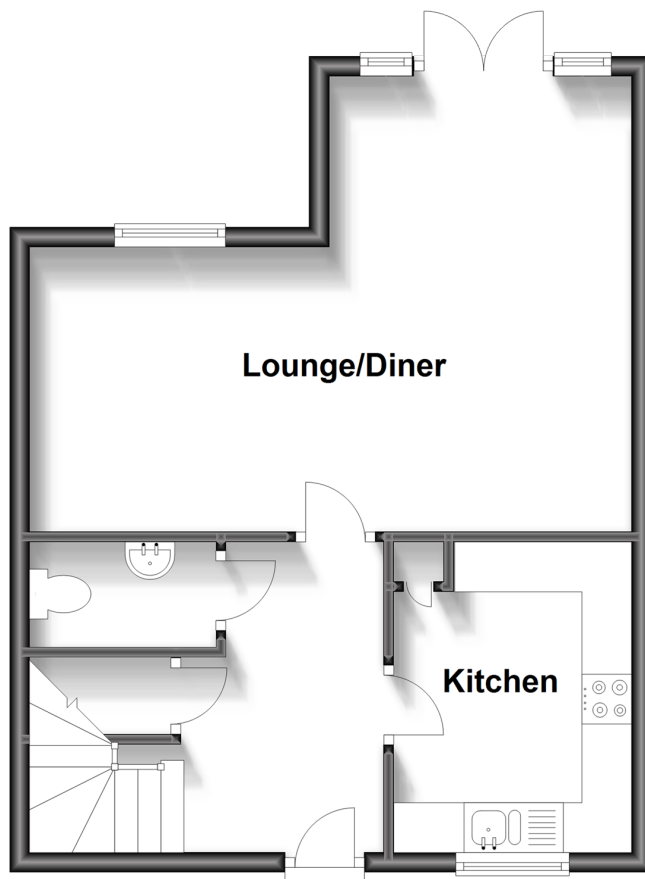
OVER 60?

Secure this property
for up to **59% less!**

Wards
Helping you move forwards

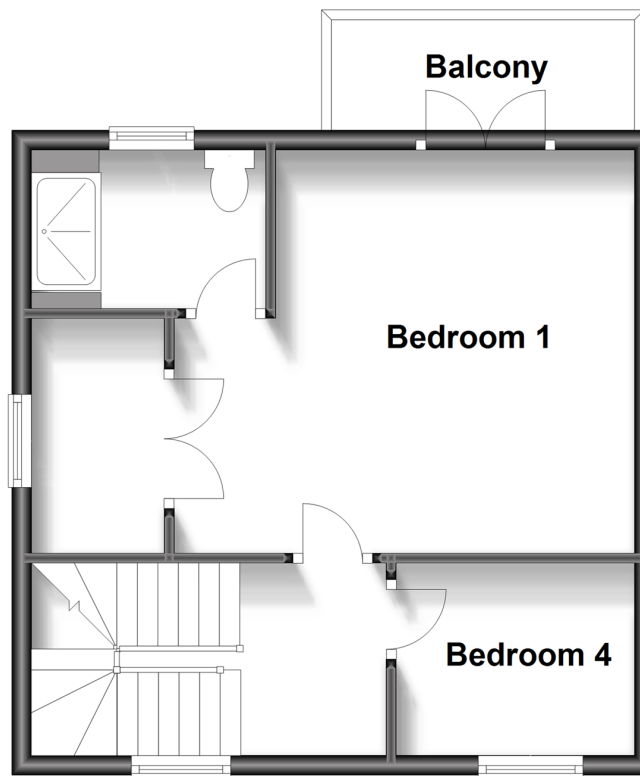
Ground Floor

Approx. 42.1 sq. metres (453.4 sq. feet)



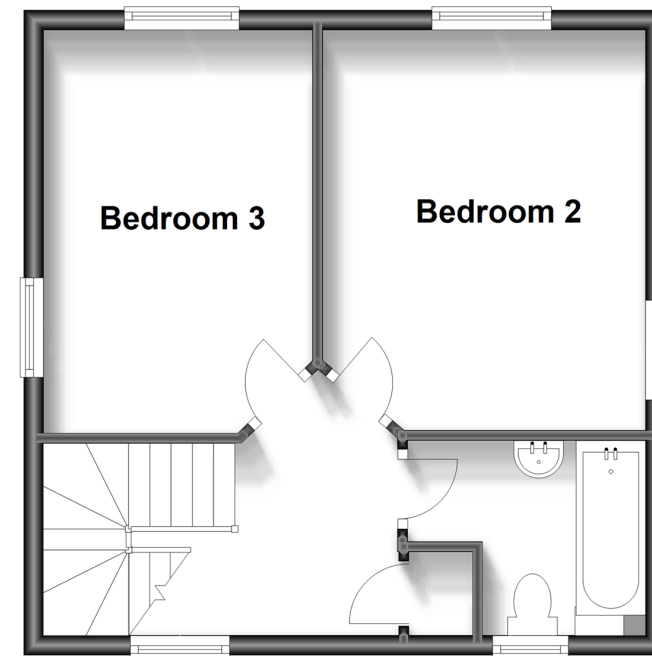
First Floor

Approx. 36.9 sq. metres (397.0 sq. feet)



Second Floor

Approx. 36.9 sq. metres (397.0 sq. feet)



Accommodation

GROUND FLOOR

Entrance Hall
Cloakroom
Kitchen: 10'2 x 7'11 (3.10m x 2.41m)
Lounge/Diner: 20'0 x 15'0 (6.10m x 4.58m)

FIRST FLOOR

Landing
Bedroom 1: 15'2 x 13'2 (4.63m x 4.02m)
Walk-in Wardrobe
En-Suite Shower Room
Balcony
Bedroom 4: 9'4 x 6'5 (2.85m x 1.96m)

SECOND FLOOR

Landing
Bedroom 2: 13'4 x 11'1 (4.07m x 3.38m)
Bedroom 3: 13'4 x 8'8 (4.07m x 2.64m)
Bathroom

OUTSIDE

Front & Rear Gardens
Garage & Driveway



Main features

- Well proportioned detached house with light & airy accommodation
- Convenient location for Discovery school & sports park
- Highly desirable study/home office
- Low maintenance landscaped rear garden
- Garage & driveway next to the property



Nearest Schools

Primary Schools: The Discovery School 0.3 miles, Valley Invicta Primary 0.9 miles, Kings Hill School 1.3 miles
Secondary Schools: Holmesdale Technology College 3.4 miles, St Augustine Academy 3.4 miles, Oakwood Park Grammar School 3.4 miles



Transport Information

Train Stations: Aylesford 2.7 miles, East Farleigh 2.8 miles, New Hythe 3.0 miles



Address

Sandow Place, Kings Hill, West Malling, Kent, ME19



Directions

For directions to this property please contact us.



Wards
Helping you move forwards

Call Kings Hill Branch 01732 222211 ■ wardsofkent.co.uk



■ Legal advice should be taken to verify fixtures/fittings, planning, alterations and/or lease details ■ Appliances & services are untested, dimensions are approximate and floor plans are not to scale
■ Through a Homewise Home For Life Plan people aged 60+ can secure this property for up to 59% less, by purchasing a Lifetime Lease.



12404645/20230718/NR/NR