



Guide Price
£550,000

Freehold

4x  2x  1x 

**Edington Way, Kings
Hill, West Malling, Kent,
ME19**

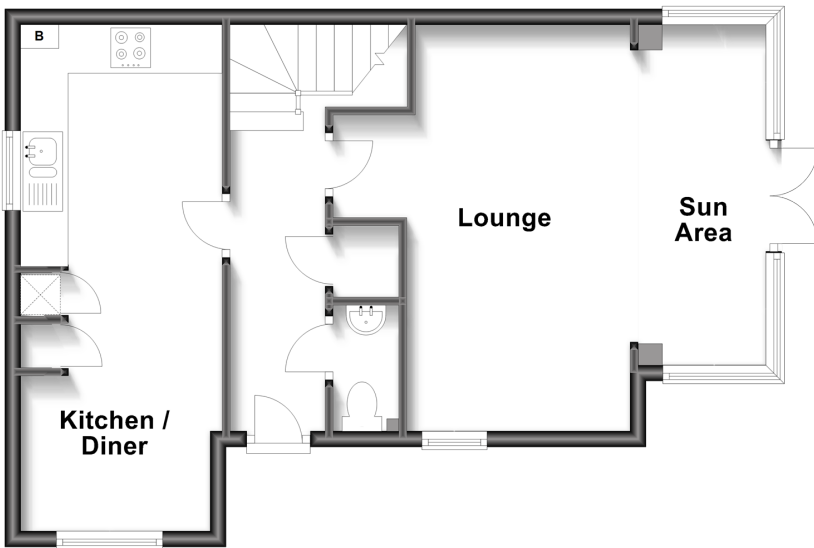
OVER 60?

Secure this property
for up to **59% less!**

Wards
Helping you move forwards

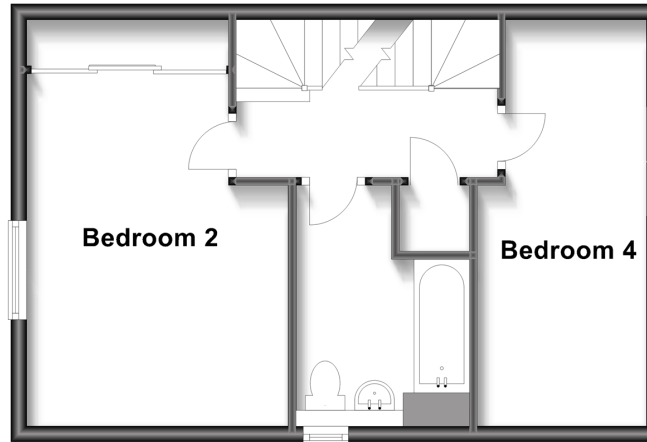
Ground Floor

Approx. 49.6 sq. metres (534.0 sq. feet)



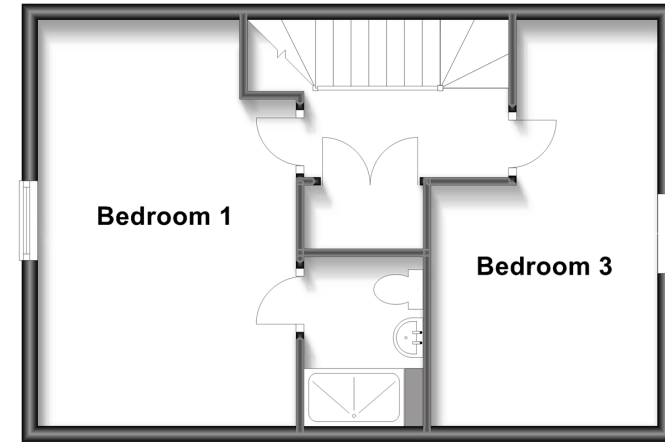
First Floor

Approx. 39.9 sq. metres (429.7 sq. feet)



Second Floor

Approx. 39.9 sq. metres (429.6 sq. feet)



Accommodation

GROUND FLOOR

Entrance Hall
Cloakroom
Lounge: 18'3 x 16'10 (5.57m x 5.13m)
Sun Area
Kitchen/Diner: 20'10 x 8'4 (6.35m x 2.54m)

FIRST FLOOR

Landing
Bedroom 2: 14'8 x 10'7 (4.47m x 3.23m)
Bedroom 4: 16'4 x 7'0 (4.98m x 2.14m)
Bathroom

SECOND FLOOR

Landing
Bedroom 1: 16'9 x 10'6 (5.11m x 3.20m)
En-Suite Shower Room
Bedroom 3: 16'9 x 7'2 (5.11m x 2.19m)

OUTSIDE

Rear Garden
2 Car Driveway



Main features

- Generous proportions & outstanding detached accommodation awaits
- Double bedrooms, en-suite shower & bathroom
- 'Smart home devices' found throughout including electric blinds
- Generous garden & private 2 car driveway & car charge point
- Easy access to Liberty Square's vast array of amenities



Nearest Schools

Primary Schools: Valley Invicta Primary 0.2 miles, Kings Hill School 0.3 miles, The Discovery School 0.6 miles
Secondary Schools: The Malling School 1.7 miles, Grange Park School 1.9 miles, Aylesford School - Sports College 3.1 miles



Transport Information

Train Stations: West Malling 1.1 miles, Watlington 1.6 miles, East Malling 1.7 miles



Address

Edington Way, Kings Hill, West Malling, Kent, ME19



Directions

For directions to this property please contact us.



Wards
Helping you move forwards

Call Kings Hill Branch 01732 222211 ■ wardsofkent.co.uk



- Legal advice should be taken to verify fixtures/fittings, planning, alterations and/or lease details
- Appliances & services are untested, dimensions are approximate and floor plans are not to scale
- Through a Homewise Home For Life Plan people aged 60+ can secure this property for up to 59% less, by purchasing a Lifetime Lease.



12404672/20240410/CH/NR