

OVER 60?

Secure this property
for up to **59% less!**



Guide Price
£900,000
Freehold

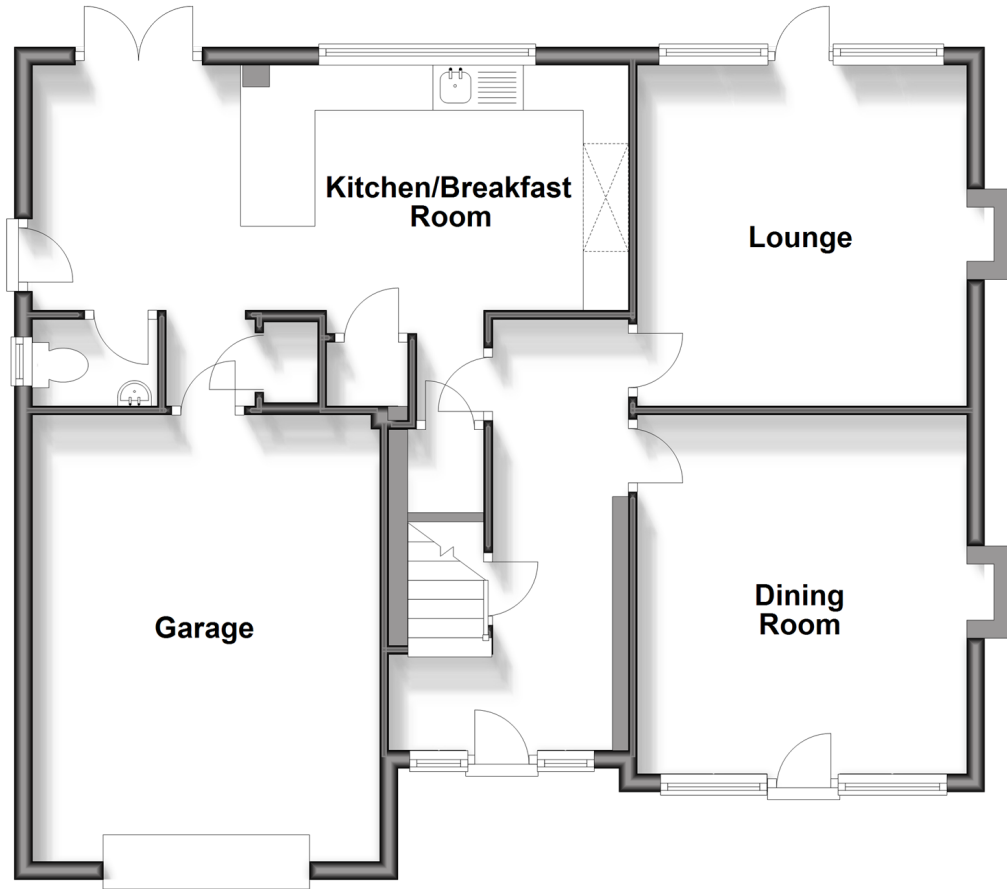
5x  2x  2x 

London Road, West Malling, Kent, ME19

Wards
Helping you move forwards

Ground Floor

Approx. 83.9 sq. metres (902.9 sq. feet)



First Floor

Approx. 80.6 sq. metres (868.0 sq. feet)



Accommodation

GROUND FLOOR

Entrance Hall
Cloakroom
Lounge: 12'11 x 11'11 (3.94m x 3.63m)
Dining Room: 12'3 x 11'11 (3.74m x 3.63m)
Kitchen/Breakfast Room: 21'7 x 9'9 (6.58m x 2.97m)

FIRST FLOOR

Landing
Bedroom 1: 16'2 x 12'7 Into wardrobes (4.93m x 3.84m)
En-Suite Shower Room
Bedroom 2: 13'0 x 11'11 (3.97m x 3.63m)
Bedroom 3: 12'3 x 11'11 (3.74m x 3.63m)
Bedroom 4: 9'1 x 6'7 (2.77m x 2.01m)
Bedroom 5: 9'8 x 8'7 (2.95m x 2.62m)
Bathroom

OUTSIDE

Large Rear Garden
Integral Garage & Driveway: 16'2 x 12'7 (4.93m x 3.84m)



Main features

- Generous detached family house set back from the road
- Excellent potential for further extension subject to planning permission
- Copious parking with large driveway & integral garage
- Popular location close to M26 motorway & West Malling high street & station
- Potential building plot within the 0.46 grounds



Nearest Schools

Primary Schools: Platt C of E Voluntary Aided Primary 1.5 miles, Offham Primary 1.6 miles, Trottiscliffe C of E Primary 2.0 miles
Secondary Schools: Wrotham School 2.8 miles, Grange Park School 3.0 miles, The Malling School 4.4 miles



Transport Information

Train Stations: Borough Green & Wrotham 2.7 miles, West Malling 3.3 miles, Snodland 4.5 miles



Address

London Road, West Malling, Kent, ME19



Directions

For directions to this property please contact us.



Call Kings Hill Branch 01732 222211 ■ wardsofkent.co.uk



■ If buying to let, the energy rating will need to be improved to at least 'E' rating before you can let the property
■ Appliances & services are untested, dimensions are approximate and floor plans are not to scale

■ Legal advice should be taken to verify fixtures/fittings, planning, alterations and/or lease details
■ Through a Homewise Home For Life Plan people aged 60+ can secure this property for up to 59% less, by purchasing a Lifetime Lease.

12404699/20240124/NR/NR