



OVER 60?

Secure this property
for up to **59% less!**

Guide Price
£700,000
Freehold

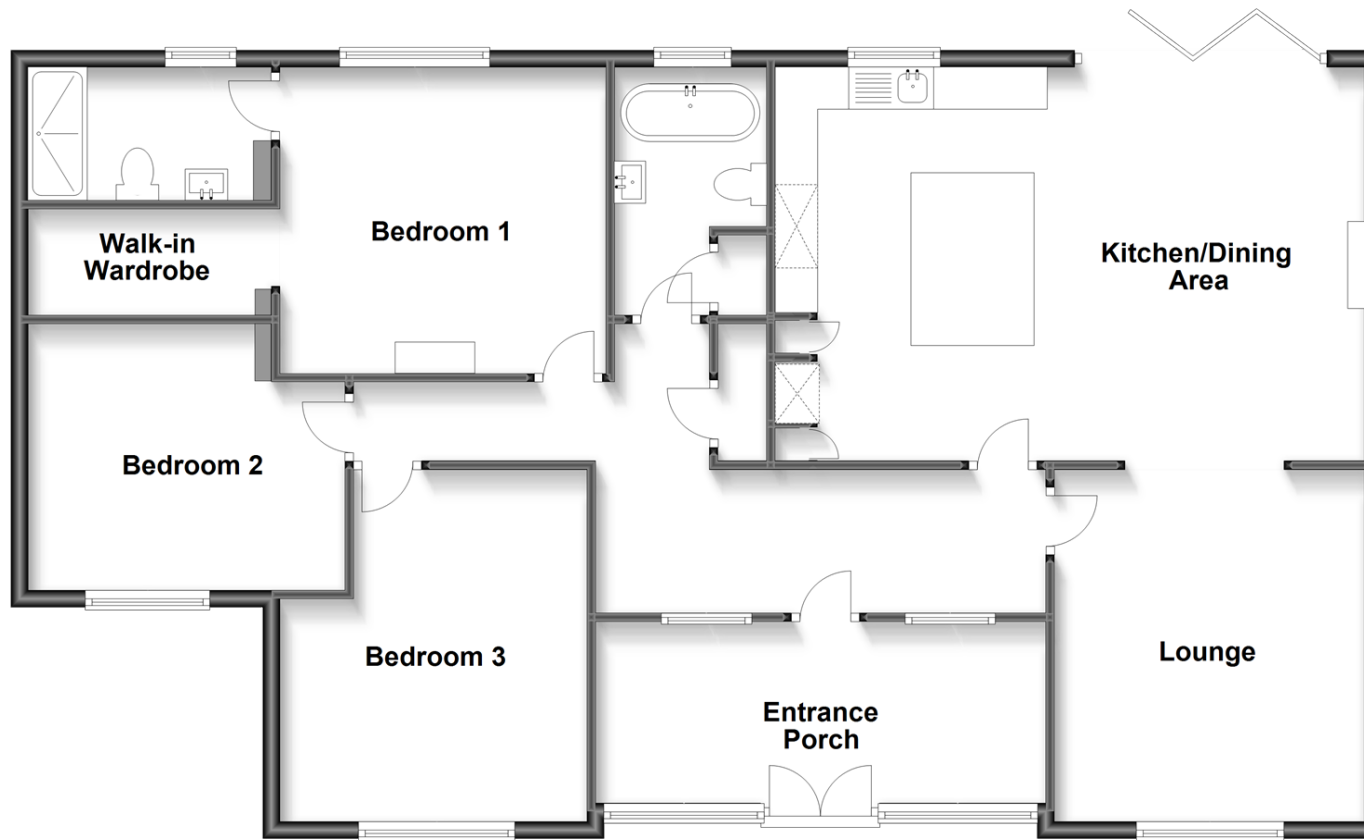
3x  2x  1x 

The Street, Mereworth, Maidstone, Kent,
ME18

Wards
Helping you move forwards

Ground Floor

Approx. 131.4 sq. metres (1414.5 sq. feet)



Accommodation

GROUND FLOOR

Entrance Porch

Entrance Hall

Lounge: 13'8 x 12'0 (4.17m x 3.66m)

Kitchen/Diner: 22'9 x 15'3 (6.94m x 4.65m)

Bedroom 1: 12'1 12 x 12'1 (3.69m x 3.69m)

En-Suite Shower Room

Walk-in Wardrobe: 8'7 x 4'7 (2.62m x 1.40m)

Bedroom 2: 12'4 x 10'3 (3.76m x 3.13m)

Bedroom 3: 13'1 x 11'11 (3.99m x 3.63m)

Bathroom

Rear Garden

Large Driveway

OUTSIDE



Main features

- A beautifully renovated detached spacious bungalow
- Upgraded throughout with a luxurious finish
- Incredible dimensions & superbly presented
- Large gardens overlooking open field
- Benefits from extremely generous driveway for multiple cars



Nearest Schools

Primary Schools: Mereworth Community Primary 0.0 miles, Kings Hill School 1.5 miles, Valley Invicta Primary 1.6 miles
Secondary Schools: The Malling School 3.5 miles, Grange Park School 3.6 miles, Wrotham School 4.0 miles



Transport Information

Train Stations: Watlington 2.2 miles, Yalding 2.8 miles, West Malling 3.0 miles



Address

The Street, Mereworth, Maidstone, Kent, ME18



Directions

For directions to this property please contact us.



Call Kings Hill Branch 01732 222211 ■ wardsofkent.co.uk



- Legal advice should be taken to verify fixtures/fittings, planning, alterations and/or lease details
- Appliances & services are untested, dimensions are approximate and floor plans are not to scale
- Through a Homewise Home For Life Plan people aged 60+ can secure this property for up to 59% less, by purchasing a Lifetime Lease.



12404737/20230703/NR/NR