

OVER 60?

Secure this property
for up to **59% less!**



Guide Price
£670,000
Freehold

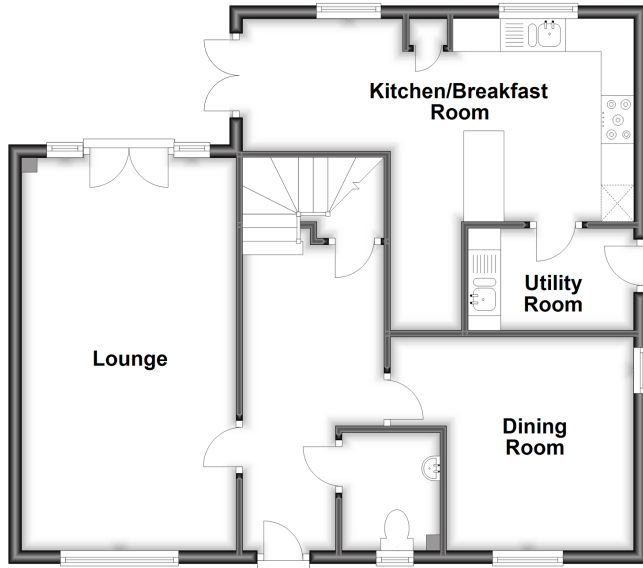
5x  3x  2x 

Dobson Close, Leybourne, West Malling,
Kent, ME19

Wards
Helping you move forwards

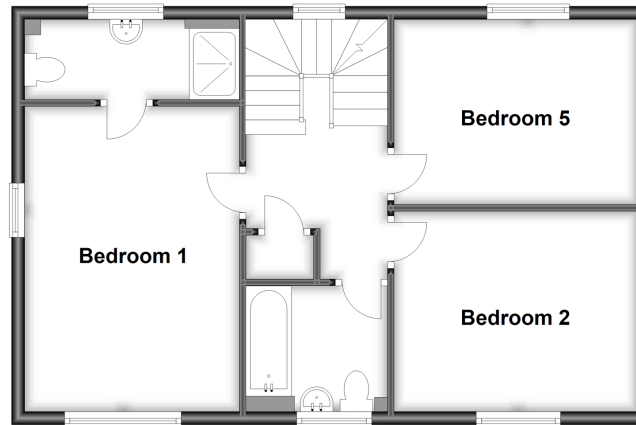
Ground Floor

Approx. 68.8 sq. metres (740.5 sq. feet)



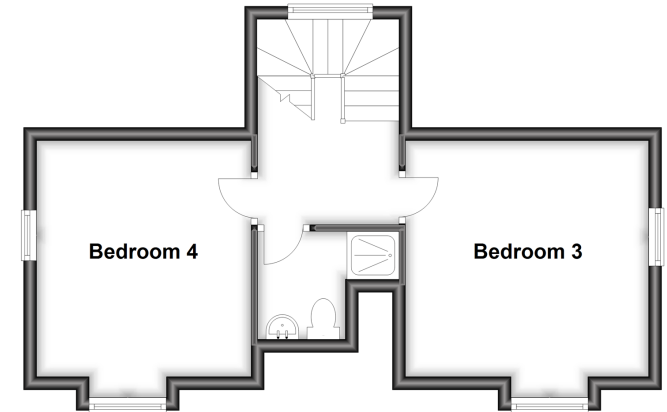
First Floor

Approx. 56.0 sq. metres (602.7 sq. feet)



Second Floor

Approx. 36.4 sq. metres (391.8 sq. feet)



Accommodation

GROUND FLOOR

Entrance Hall

Cloakroom

Lounge: 19'7 x 10'9 (5.97m x 3.28m)

Dining Room: 12'2 x 10'7 (3.71m x 3.23m)

Kitchen/Breakfast Room: 19'2 x 11'0 (5.85m x 3.36m)

Utility: 8'4 x 5'1 (2.54m x 1.55m)

FIRST FLOOR

Landing

Bedroom 1: 14'10 x 10'8 (4.52m x 3.25m)

En-Suite Shower Room

Bedroom 2: 12'3 x 9'11 (3.74m x 3.02m)

Bedroom 5: 12'2 x 9'4 (3.71m x 2.85m)

Bathroom

SECOND FLOOR

Landing

Bedroom 3: 12'6 x 11'9 (3.81m x 3.58m)

Bedroom 4: 13'7 into bay x 10'10 (4.14m x 3.30m)

Shower Room

OUTSIDE

Front & Rear Gardens

Large Driveway

Double Garage: 18'0 x 18'0 (5.49m x 5.49m)



Main features

- One of the most impressive plots within the development
- Detached house with a truly exceptional garden overlooking trees & wildlife
- NHBC guaranteed family home
- Double garage & multi vehicle driveway
- An impressive home to be enjoyed for years to come



Nearest Schools

Primary Schools: Ryarsh Primary 0.4 miles, Leybourne, St Peter and St Paul C of E Voluntary Aided Primary 0.9 miles, West Malling C of E Voluntary Controlled Primary and Language 1.0 miles
Secondary Schools: Grange Park School 0.4 miles,



Transport Information

Train Stations: West Malling 1.3 miles, New Hythe 2.1 miles, East Malling 2.1 miles



Address

Dobson Close, Leybourne, West Malling, Kent, ME19



Directions

For directions to this property please contact us.



Call Kings Hill Branch 01732 222211 ■ wardsofkent.co.uk



- Legal advice should be taken to verify fixtures/fittings, planning, alterations and/or lease details
- Appliances & services are untested, dimensions are approximate and floor plans are not to scale
- Through a Homewise Home For Life Plan people aged 60+ can secure this property for up to 59% less, by purchasing a Lifetime Lease.



12404756/20230515/NR/NR