



**Guide Price**  
**£540,000**

**Freehold**

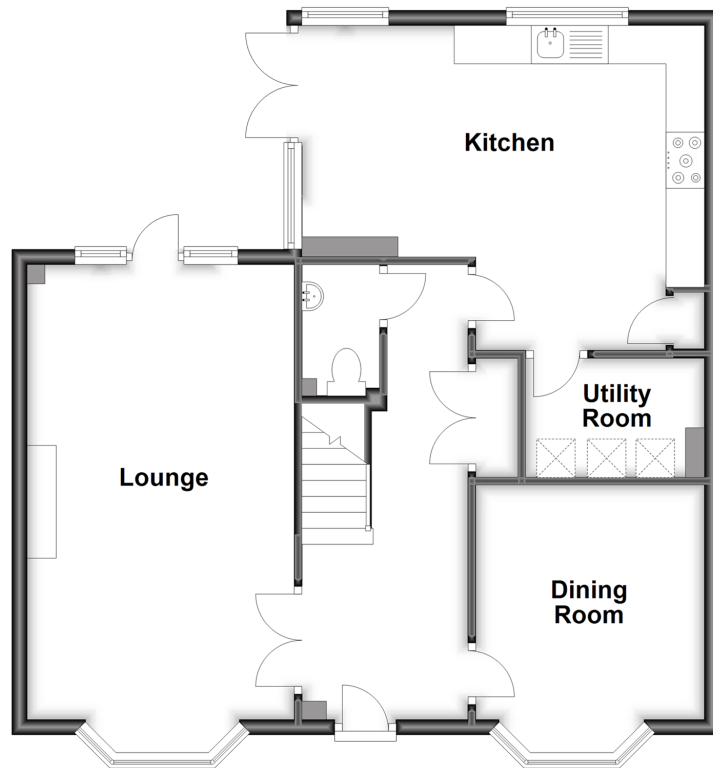
4x  3x  3x 

**Orient Court, Kings Hill,  
West Malling, Kent,  
ME19**

*Wards*  
Helping you move forwards

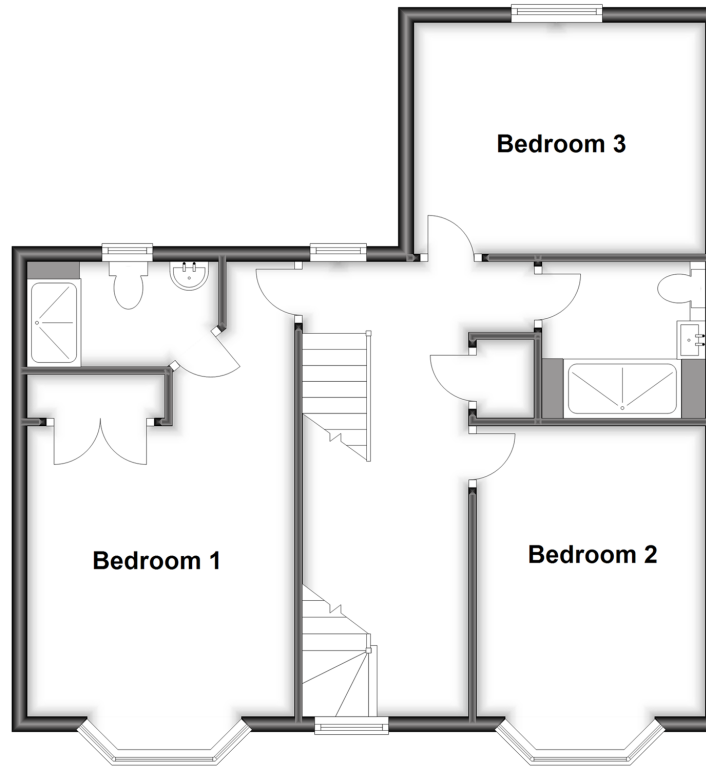
## Ground Floor

Approx. 69.3 sq. metres (746.2 sq. feet)



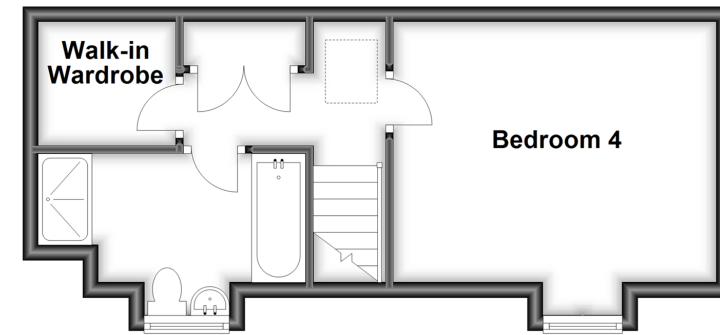
## First Floor

Approx. 64.6 sq. metres (695.4 sq. feet)



## Second Floor

Approx. 30.6 sq. metres (329.0 sq. feet)



## Accommodation

### GROUND FLOOR

Entrance Hall  
Cloakroom  
Lounge: 19'6 x 11'5 (5.95m x 3.48m)  
Dining Room: 9'2 x 8'2 (2.80m x 2.49m)  
Kitchen: 17'7 x 15'9 (5.36m x 4.80m)  
Utility Room

### FIRST FLOOR

Landing  
Bedroom 1: 19'4 Max x 11'10 (5.90m x 3.61m)  
En-Suite Shower Room  
Bedroom 2: 12'6 x 10'2 (3.81m x 3.10m)  
Bedroom 3: 12'4 x 9'10 (3.76m x 3.00m)  
Bathroom

### SECOND FLOOR

Landing  
Bedroom 4: 12'8 x 11'1 (3.86m x 3.38m)  
Walk In Wardrobe  
Bathroom

### OUTSIDE

Front & Rear Gardens  
Double Car Port





## Main features

- A substantial & spacious terraced house
- All genuine double bedrooms & three bathrooms
- Attractive & appealing light & airy accommodation
- Benefitting from a double car port
- Conveniently located for Liberty Square, shops & schools



### Nearest Schools

Primary Schools: Kings Hill School 0.2 miles, Valley Invicta Primary 0.3 miles, The Discovery School 1.0 miles  
Secondary Schools: Grange Park School 3.8 miles, The Malling School 4.0 miles, Wrotham School 4.4 miles



### Transport Information

Train Stations: West Malling 3.0 miles, East Farleigh 3.5 miles, New Hythe 3.7 miles



### Address

Orient Court, Kings Hill, West Malling, Kent, ME19



### Directions

For directions to this property please contact us.





**Wards**  
Helping you move forwards

Call Kings Hill Branch 01732 222211 ■ [wardsofkent.co.uk](http://wardsofkent.co.uk)



■ Legal advice should be taken to verify fixtures/fittings, planning, alterations and/or lease details ■ Appliances & services are untested, dimensions are approximate and floor plans are not to scale



12404801/20231121/SG/NR