



Guide Price
£570,000

Freehold

4x  2x  2x 

**Atlas Close, Kings Hill,
West Malling, Kent,
ME19**

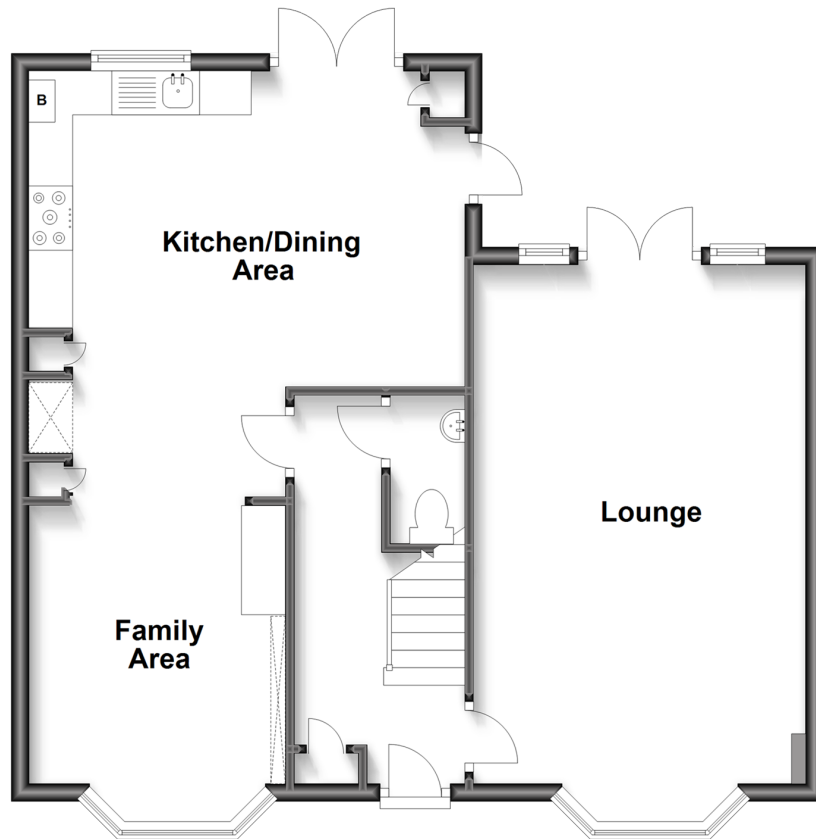
OVER 60?

Secure this property
for up to **59% less!**

Wards
Helping you move forwards

Ground Floor

Approx. 63.7 sq. metres (685.7 sq. feet)



First Floor

Approx. 63.7 sq. metres (685.7 sq. feet)



Accommodation

GROUND FLOOR

Entrance Hall
Cloakroom
Lounge: 22'10 x 11'6 (6.96m x 3.51m)
Family Area: 13'4 x 8'11 (4.07m x 2.72m)
Kitchen/Dining Area: 16'8 x 15'10 (5.08m x 4.83m)

FIRST FLOOR

Landing
Bedroom 1: 14'9 x 9'2 (4.50m x 2.80m)
En-Suite Shower Room
Bedroom 2: 13'6 x 11'10 (4.12m x 3.61m)
Bedroom 3: 10'5 x 9'3 (3.18m x 2.82m)
Bedroom 4: 8'9 x 8'4 (2.67m x 2.54m)
Bathroom

OUTSIDE

Front & Rear Gardens
Garage & Driveway



Main features

- Incredibly spacious & well appointed semi-detached house
- The ideal layout for modern family living
- Immaculate presentation throughout
- Walking distance to Discovery school & sports park
- Sunny landscaped garden with access to garage & driveway



Nearest Schools

Primary Schools: The Discovery School 0.0 miles, More Park Catholic Primary 0.8 miles, Kings Hill School 0.8 miles
Secondary Schools: The Malling School 1.9 miles, Grange Park School 2.1 miles, Bower Grove School 3.0 miles



Transport Information

Train Stations: West Malling 0.7 miles, East Malling 2.1 miles, East Farleigh 2.8 miles



Address

Atlas Close, Kings Hill, West Malling, Kent, ME19



Directions

For directions to this property please contact us.



Wards
Helping you move forwards

Call Kings Hill Branch 01732 222211 ■ wardsofkent.co.uk



- Legal advice should be taken to verify fixtures/fittings, planning, alterations and/or lease details
- Appliances & services are untested, dimensions are approximate and floor plans are not to scale
- Through a Homewise Home For Life Plan people aged 60+ can secure this property for up to 59% less, by purchasing a Lifetime Lease.



12404802/20230526/CH/NR