



Guide Price
£750,000

Freehold

5x  3x  2x 

**The Street, Mereworth,
Maidstone, Kent, ME18**

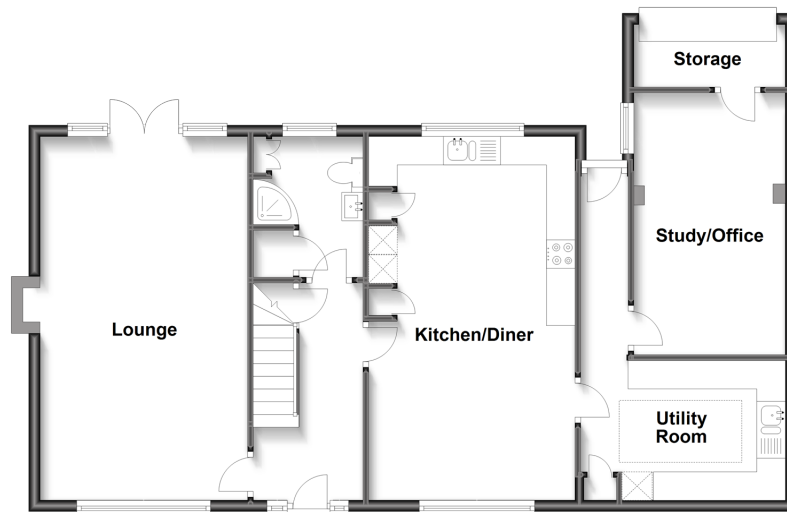
OVER 60?

Secure this property
for up to **59% less!**

Wards
Helping you move forwards

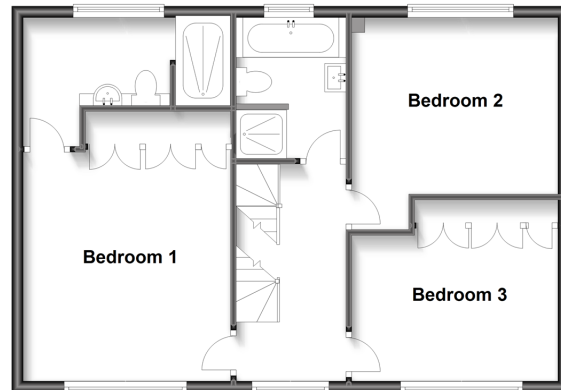
Ground Floor

Approx. 88.0 sq. metres (946.7 sq. feet)



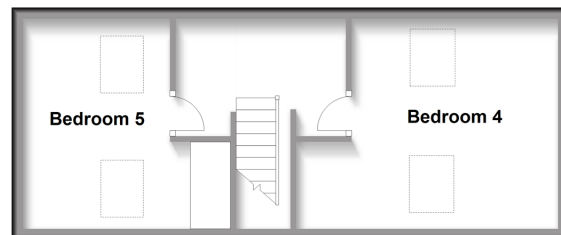
First Floor

Approx. 59.9 sq. metres (645.0 sq. feet)



Second Floor

Approx. 34.7 sq. metres (373.4 sq. feet)



Accommodation

GROUND FLOOR

Entrance Hall

Lounge: 20'11 x 11'10 (6.38m x 3.61m)

Kitchen/Diner: 21'0 x 12'0 (6.41m x 3.66m)

Utility Room: 11'8 x 8'1 (3.56m x 2.47m)

Study/Office: 15'2 x 8'8 (4.63m x 2.64m)

Shower Room

Storage

FIRST FLOOR

Landing

Bedroom 1: 14'5 x 11'11 (4.40m x 3.63m)

En-Suite Shower Room

Bedroom 2: 11'11 x 10'2 (3.63m x 3.10m)

Bedroom 3: 11'11 x 10'2 (3.63m x 3.10m)

Bathroom

SECOND FLOOR

Landing

Bedroom 4: 15'2 x 12'1 (4.63m x 3.69m)

Bedroom 5: 12'0 x 9'0 (3.66m x 2.75m)

OUTSIDE

Front & Rear Gardens

Large Gravel Driveway

Electric Gates



Main features

- Detached home refurbished to an incredibly high specification
- Sensational accommodation across impressive three floors
- Home office with high speed separate broadband
- Incredible views over the surrounding countryside
- Chain free & move in ready



Nearest Schools

Primary Schools: Mereworth Community Primary 0.3 miles, Valley Invicta Primary 1.4 miles, Kings Hill School 2.2 miles
Secondary Schools: Grange Park School 4.9 miles, The Malling School 5.1 miles



Transport Information

Train Stations: Watlington 2.2 miles, West Malling 3.5 miles, Borough Green & Wrotham 3.8 miles



Address

The Street, Mereworth, Maidstone, Kent, ME18



Directions

For directions to this property please contact us.



Call Kings Hill Branch 01732 222211 ■ wardsofkent.co.uk



- Legal advice should be taken to verify fixtures/fittings, planning, alterations and/or lease details
- Appliances & services are untested, dimensions are approximate and floor plans are not to scale
- Through a Homewise Home For Life Plan people aged 60+ can secure this property for up to 59% less, by purchasing a Lifetime Lease.



12404805/20230714/CH/NR