



Guide Price
£575,000

Freehold

3x  2x  2x 

**Tonbridge Road, Teston,
Maidstone, Kent, ME18**

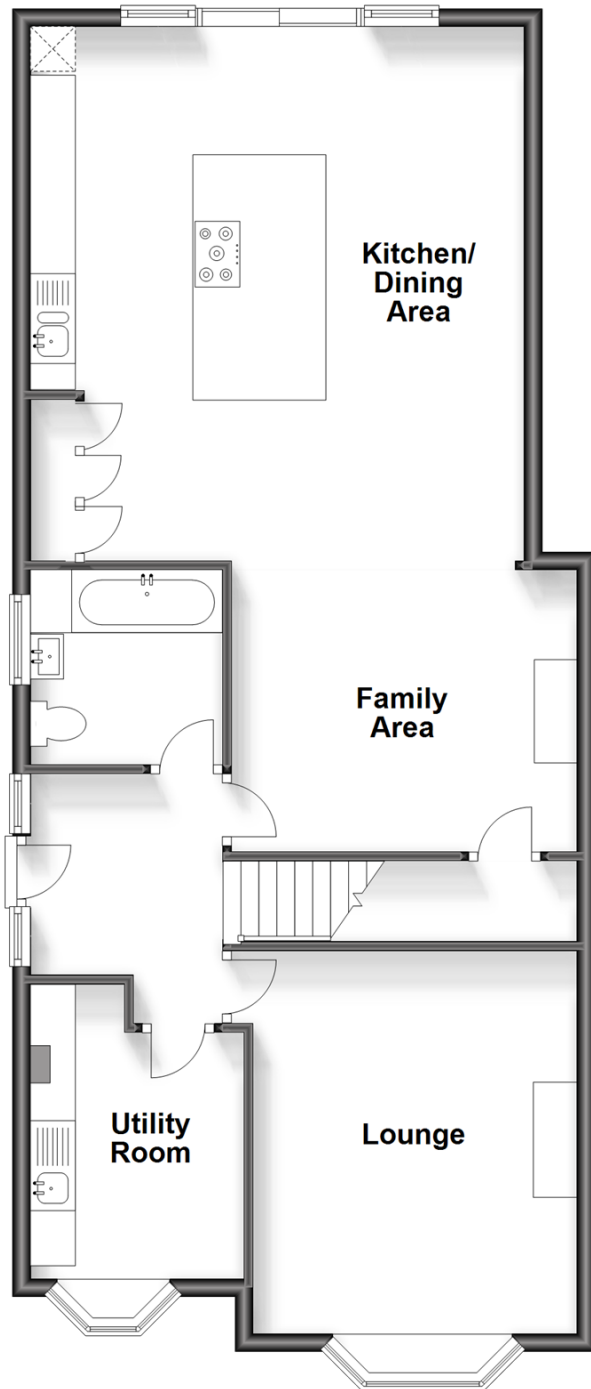
OVER 60?

Secure this property
for up to **59% less!**

Wards
Helping you move forwards

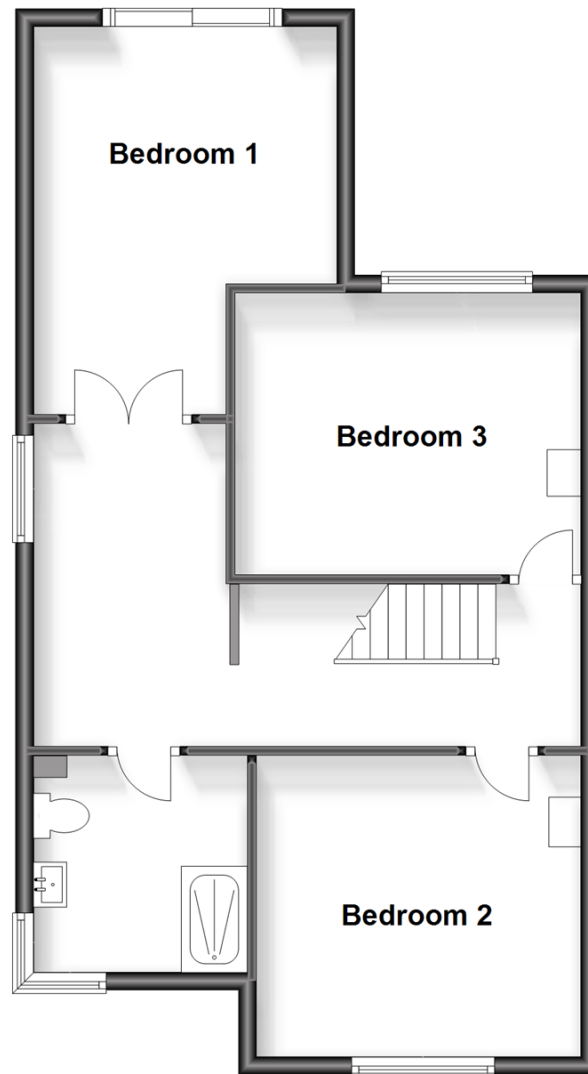
Ground Floor

Approx. 84.0 sq. metres (903.9 sq. feet)



First Floor

Approx. 59.9 sq. metres (644.4 sq. feet)



Accommodation

GROUND FLOOR

Entrance Hall

Lounge: 16'0 into bay x 11'10 (4.88m x 3.61m)

Family Area: 12'7 x 11'1 (3.84m x 3.38m)

Kitchen/Dining Area: 19'5 x 18'1 (5.92m x 5.52m)

Utility Room: 10'8 into bay x 7'9 (3.25m x 2.36m)

Bathroom

FIRST FLOOR

Landing

Bedroom 1: 14'11 x 11'1 (4.55m x 3.38m)

Dressing Area: 11'9 x 10'10 (3.58m x 3.30m)

Bedroom 2: 11'9 x 10'10 (3.58m x 3.30m)

Bedroom 3: 12'1 x 10'2 (3.69m x 3.10m)

Shower Room

OUTSIDE

Large Gravel Driveway

Large Landscaped Rear Garden



Main features

- Beautifully presented extended semi detached family home
- Magnificent far reaching countryside views
- Light, bright, airy and uplifting accommodation
- Exceptional large landscaped rear garden
- Large driveway



Nearest Schools

Primary Schools: Watringbury C of E Primary 0.8 miles, The Discovery School 1.5 miles, Barming Primary 1.7 miles
Secondary Schools: Bower Grove School 2.3 miles, The Malling School 2.5 miles, Oakwood Park Grammar School 2.7 miles



Transport Information

Train Stations: Watringbury 0.8 miles, East Farleigh 2.3 miles, Barming 2.6 miles



Address

Tonbridge Road, Teston, Maidstone, Kent, ME18



Directions

For directions to this property please contact us.



Call Kings Hill Branch 01732 222211 ■ wardsofkent.co.uk



- If buying to let, the energy rating will need to be improved to at least 'E' rating before you can let the property
- Appliances & services are untested, dimensions are approximate and floor plans are not to scale

- Legal advice should be taken to verify fixtures/fittings, planning, alterations and/or lease details
- Through a Homewise Home For Life Plan people aged 60+ can secure this property for up to 59% less, by purchasing a Lifetime Lease.



12404811/20230918/SG/NR