



Price

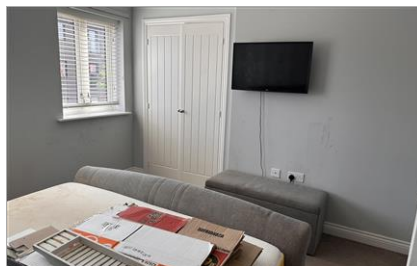
£310,000

Freehold

2x  1x  1x 

**Hirschield Drive,
Leybourne, West
Malling, Kent, ME19**

Wards
Helping you move forwards



Main features

- **Modern mid terraced house that is priced to sell**
- **Chain free with immediate vacant possession**
- **Well proportioned accommodation**
- **Ideal first purchase or investment**
- **Allocated parking & close to shops**



Nearest Schools

Primary Schools: Ryarsh Primary 0.7 miles, Leybourne, St Peter and St Paul C of E Voluntary Aided Primary 0.7 miles, West Malling C of E Voluntary Controlled Primary and Language 0.9 miles
Secondary Schools: Grange Park School 0.3 miles, Holmesdale Technology College 1.6 miles, The Malling School 1.6 miles



Transport Information

Train Stations: West Malling 1.2 miles, New Hythe 1.9 miles, East Malling 2.0 miles

Accommodation

GROUND FLOOR

Entrance Hall

Cloakroom

Lounge: 15'6 x 11'6 (4.73m x 3.51m)

Kitchen: 10'6 x 8'5 (3.20m x 2.57m)

FIRST FLOOR

Landing

Bedroom 1: 12'11 x 12'8 (3.94m x 3.86m)

Bedroom 2: 15'6 x 9'5 (4.73m x 2.87m)

Bathroom

OUTSIDE

Rear Garden

Allocated Parking

Call Kings Hill - 01732 222211 ■ wardsofkent.co.uk

■ Legal advice should be taken to verify fixtures/fittings, planning, alterations and/or lease details

■ Appliances & services are untested, dimensions are approximate and floor plans are not to scale



12404817/20230724/CH/NR