



**Guide Price**  
**£520,000**

**Freehold**

3x  2x  1x 

**Arditi Walk, Kings Hill,  
West Malling, Kent,  
ME19**

**OVER 60?**

Secure this property  
for up to **59% less!**

*Wards*  
Helping you move forwards





## Main features

- Attractive & practical modern detached family
- Incredibly light, bright & airy
- Dual zone heating & integrated appliances
- Close to Discovery school, cricket pitch & Linear Park
- Conveniently placed car port & driveway

## Accommodation

### GROUND FLOOR

Entrance Hall

Cloakroom

Lounge: 19'4 x 10'6 (5.90m x 3.20m)

Kitchen/Diner: 17'6 x 9'6 (5.34m x 2.90m)

### FIRST FLOOR

Landing

Bedroom 1: 15'4 x 10'6 (4.68m x 3.20m)

En-Suite Shower Room

Bedroom 2: 10'1 x 9'8 (3.08m x 2.95m)

Bedroom 3: 9'7 x 7'5 (2.92m x 2.26m)

Bathroom

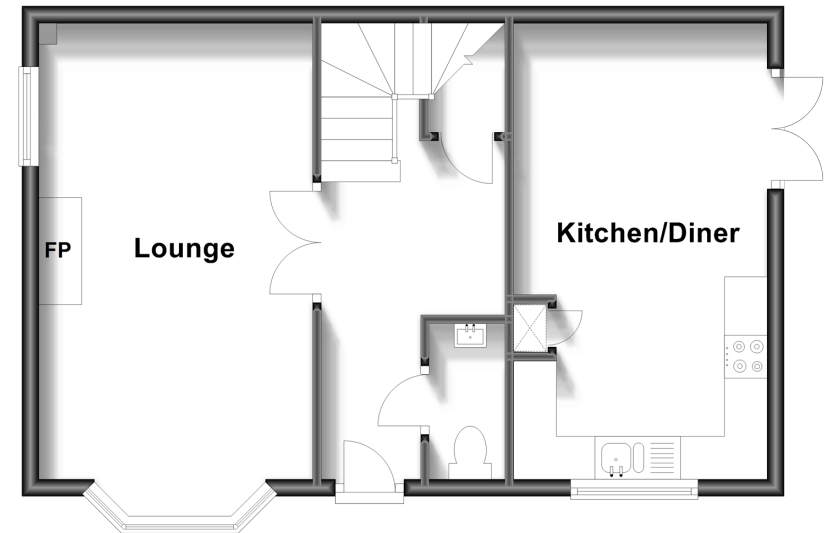
### OUTSIDE

Rear Garden

Car Port & Driveway

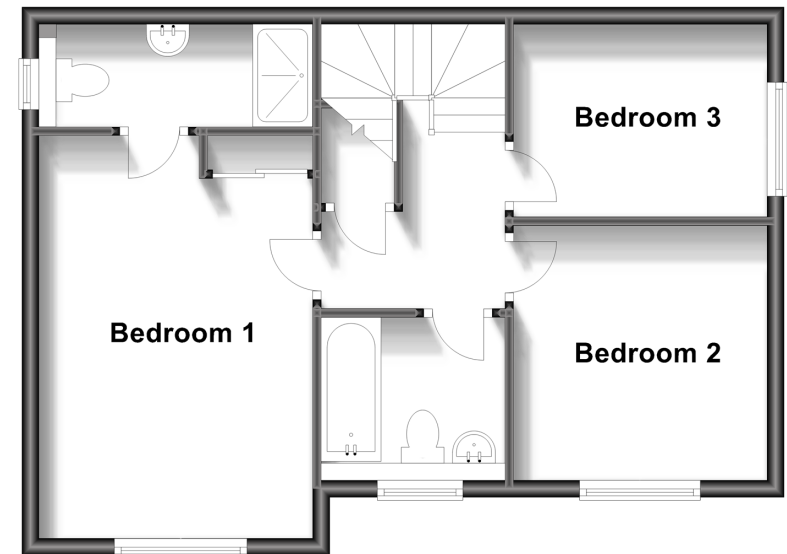
## Ground Floor

Approx. 45.6 sq. metres (490.4 sq. feet)



## First Floor

Approx. 47.5 sq. metres (511.0 sq. feet)



**Call Kings Hill - 01732 222211 ■ [wardsofkent.co.uk](http://wardsofkent.co.uk)**

- Legal advice should be taken to verify fixtures/fittings, planning, alterations and/or lease details
- Appliances & services are untested, dimensions are approximate and floor plans are not to scale
- Through a Homewise Home For Life Plan people aged 60+ can secure this property for up to 59% less, by purchasing a Lifetime Lease.



12404829/20230717/NR/NR