

OVER 60?

Secure this property
for up to **59% less!**



Guide Price
£630,000
Freehold

4x  2x  2x 

Upper Mill, Watringbury, Maidstone, Kent,
ME18

Wards
Helping you move forwards



Accommodation

GROUND FLOOR

Entrance Hall

Kitchen/Dining/Living Area: 25'0 x 24'3 (7.63m x 7.40m)

Lounge: 25'3 x 11'11 (7.70m x 3.63m)

Inner Hallway

Bedroom 1: 13'11 x 11'11 (4.24m x 3.63m)

Dressing Room: 11'8 x 4'1 (3.56m x 1.25m)

En-Suite Bathroom

Bedroom 2: 14'8 x 10'11 upto wardrobes (4.47m x 3.33m)

Bedroom 3: 10'9 x 8'9 (3.28m x 2.67m)

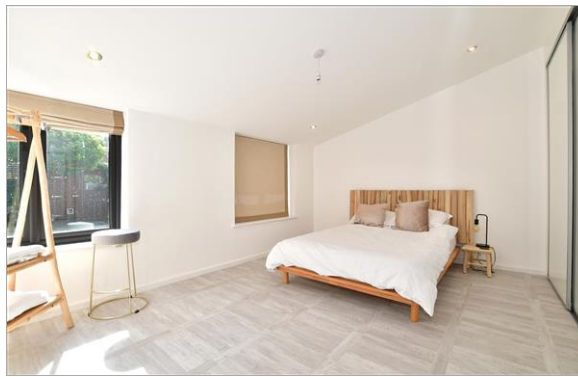
Bedroom 4: 10'0 x 9'5 upto wardrobes (3.05m x 2.87m)

Bathroom

OUTSIDE

Secluded Walled Rear Garden

Garage & Driveway



Main features

- Spectacular award winning refurbished detached bungalow
- High specification accommodation including bi-folding doors & generous en-suite
- Sunny aspect garden with complete seclusion & privacy
- Convenient location & rarely available
- No chain, garage & driveway



Nearest Schools

Primary Schools: Watlingbury C of E Primary 0.9 miles, Valley Invicta Primary 1.5 miles, Mereworth Community Primary 2.1 miles
Secondary Schools: The Malling School 3.4 miles, Bower Grove School 3.7 miles, St Augustine Academy 3.7 miles



Transport Information

Train Stations: Watlingbury 0.5 miles, East Malling 2.9 miles, Yalding 3.2 miles



Address

Upper Mill, Watlingbury, Maidstone, Kent, ME18



Directions

For directions to this property please contact us.



Call Kings Hill Branch 01732 222211 ■ wardsofkent.co.uk



- Legal advice should be taken to verify fixtures/fittings, planning, alterations and/or lease details
- Appliances & services are untested, dimensions are approximate and floor plans are not to scale
- Through a Homewise Home For Life Plan people aged 60+ can secure this property for up to 59% less, by purchasing a Lifetime Lease.



12404841/20230818/CH/NR