



**Guide Price**  
**£350,000**

**Freehold**

3x  2x  1x 

**Teddington Drive, West  
Malling, Kent, ME19**

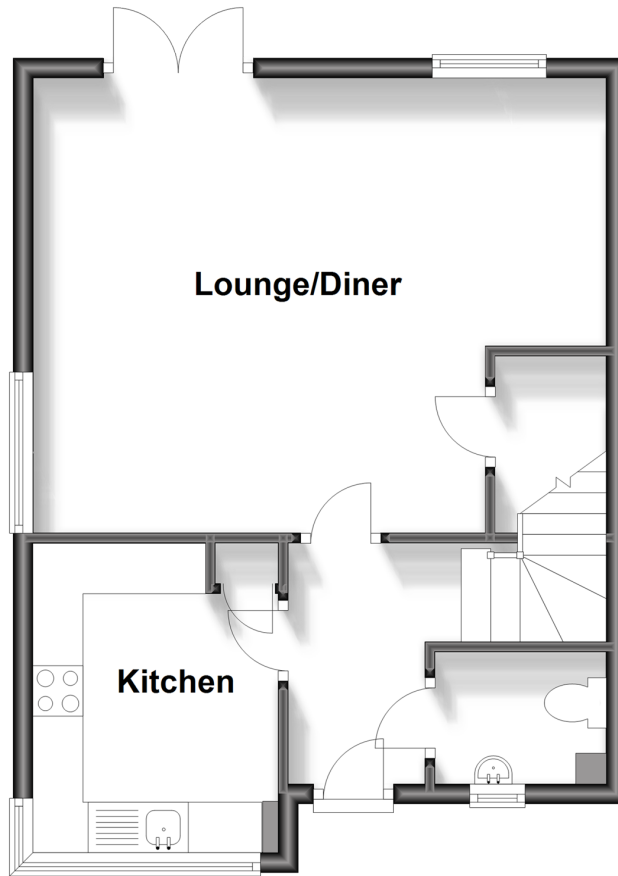
**OVER 60?**

Secure this property  
for up to **59% less!**

*Wards*  
Helping you move forwards

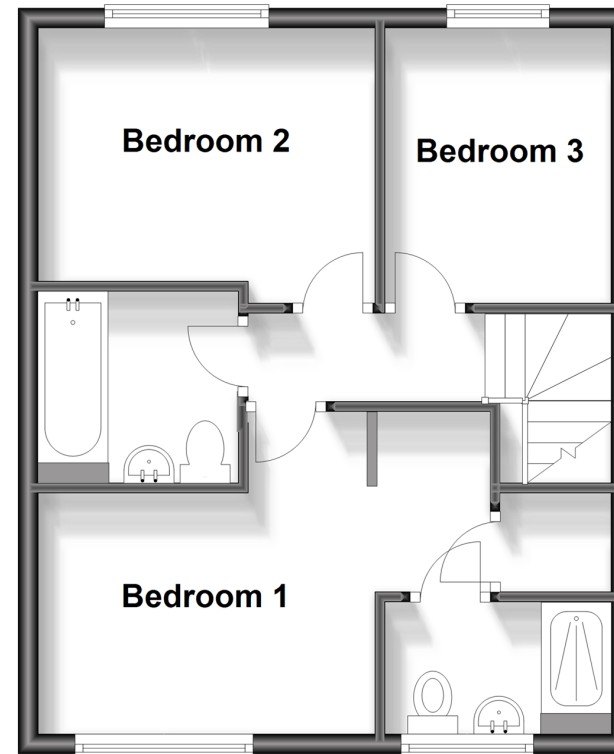
## Ground Floor

Approx. 450.3 sq. feet



## First Floor

Approx. 434.9 sq. feet



## Accommodation

### GROUND FLOOR

Entrance Hall

Cloakroom

Lounge/Diner: 18'9 x 14'8 (5.72m x 4.47m)

Kitchen: 10'0 x 7'11 (3.05m x 2.41m)

### FIRST FLOOR

Landing

Bedroom 1: 14'10 x 10'5 (4.52m x 3.18m)

En-Suite Shower Room

Bedroom 2: 10'5 x 8'10 (3.18m x 2.69m)

Bedroom 3: 8'11 x 7'5 (2.72m x 2.26m)

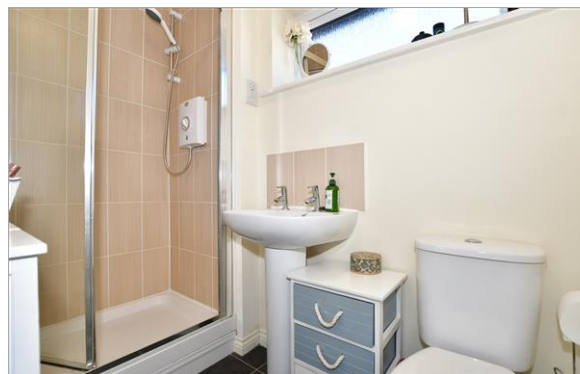
Bathroom

### OUTSIDE

Rear Garden

2 Car Driveway





## Main features

- Modern terraced house on the popular Leybourne Chase development
- Light & Airy spacious lounge/diner
- Modern features throughout
- Close to popular primary school & local amenities
- Parking for 2 cars within a private mews setting



### Nearest Schools

Primary Schools: West Malling C of E Voluntary Controlled Primary and Language 1.3 miles, Offham Primary 1.7 miles, St Katherine's School 1.8 miles  
Secondary Schools: Grange Park School 0.5 miles, The Malling School 2.9 miles, Holmesdale Technology College



### Transport Information

Train Stations: West Malling 1.8 miles, East Malling 3.3 miles, Aylesford 3.5 miles



### Address

Teddington Drive, West Malling, Kent, ME19



### Directions

For directions to this property please contact us.





Call Kings Hill Branch 01732 222211 ■ [wardsofkent.co.uk](http://wardsofkent.co.uk)



- Legal advice should be taken to verify fixtures/fittings, planning, alterations and/or lease details
- Appliances & services are untested, dimensions are approximate and floor plans are not to scale
- Through a Homewise Home For Life Plan people aged 60+ can secure this property for up to 59% less, by purchasing a Lifetime Lease.



12404855/20230821/TT/NR