



Guide Price
£900,000

Freehold

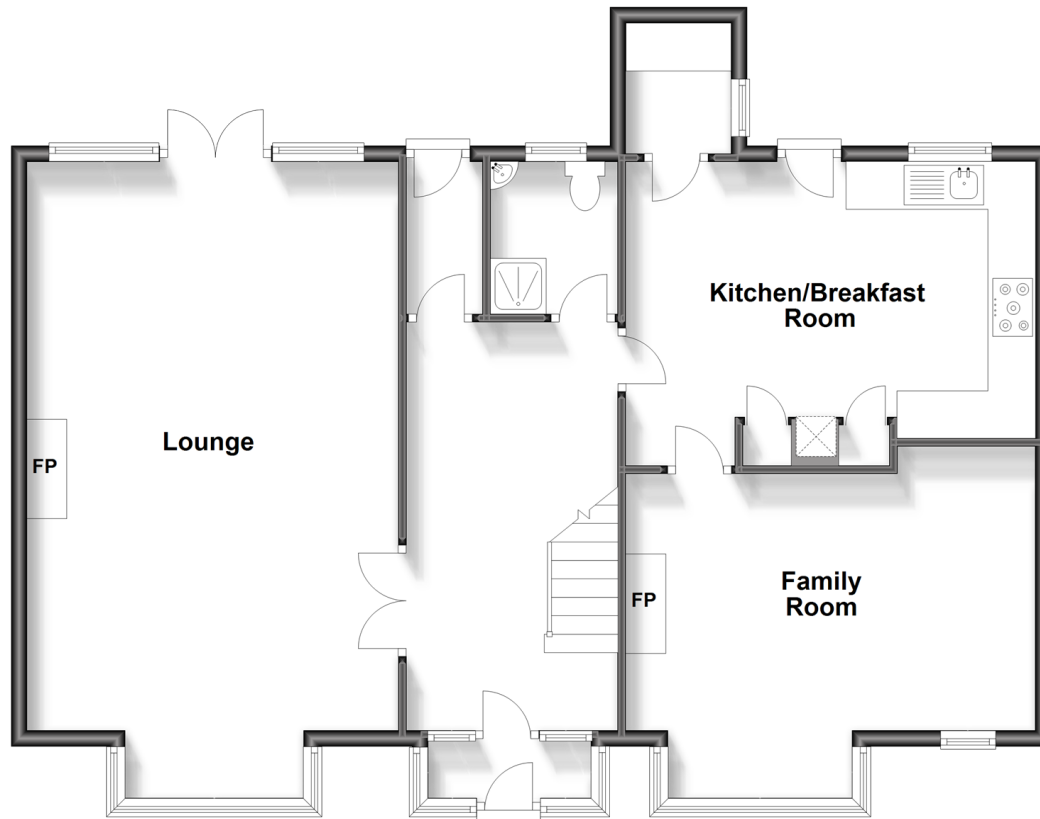
4x  2x  2x 

**Hernewell Cottage,
London Road,
Addington, West
Malling, Kent, ME19**

Wards
Helping you move forwards

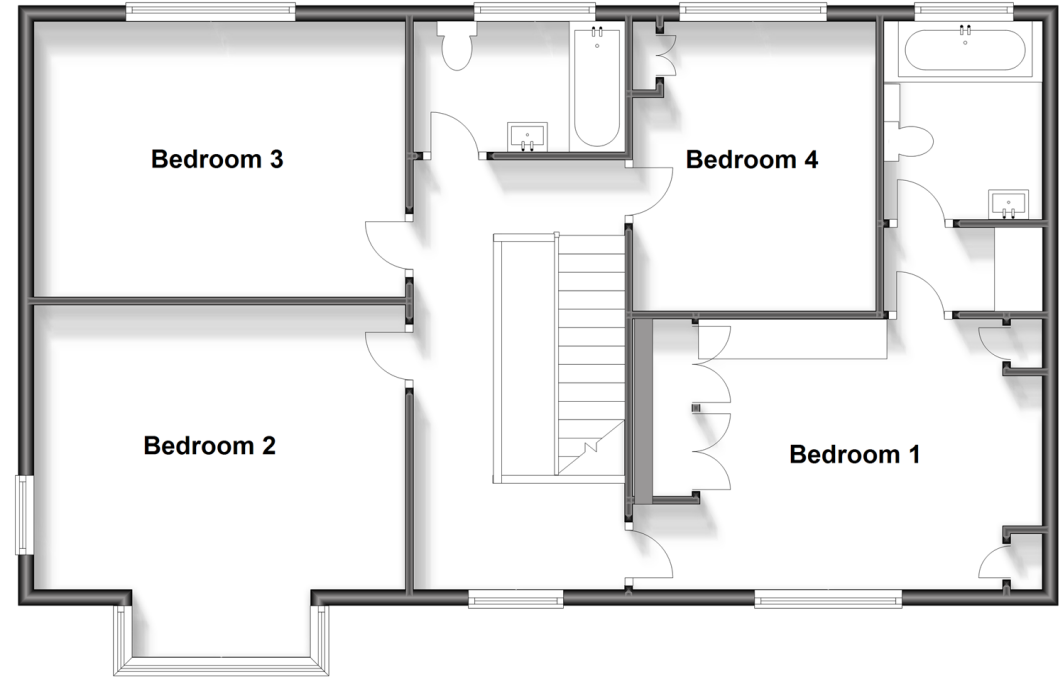
Ground Floor

Approx. 98.6 sq. metres (1060.8 sq. feet)



First Floor

Approx. 89.7 sq. metres (965.7 sq. feet)



Accommodation

GROUND FLOOR

Entrance Porch
 Reception Hall: 17'7 x 8'11 (5.36m x 2.72m)
 Lounge: 21'9 x 8'11 (6.63m x 2.72m)
 Family Room: 16'10 x 13'9 (5.13m x 4.19m)
 Kitchen/Breakfast Room: 16'9 x 11'10 (5.11m x 3.61m)
 Utility Room: 4'11 x 4'3 (1.50m x 1.30m)
 Boot Room: 5'11 x 3'3 (1.80m x 0.99m)
 Shower Room
 Cellar: 14'6 x 12'6 (4.42m x 3.81m)

Galleried Landing

Bedroom 1: 16'11 x 11'2 (5.16m x 3.41m)
 En-Suite Shower Room
 Dressing Area
 Bedroom 2: 15'3 x 14'5 (4.65m x 4.40m)
 Bedroom 3: 15'2 x 14'5 (4.63m x 4.40m)
 Bedroom 4: 12'0 x 10'0 (3.66m x 3.05m)
 Bathroom

OUTSIDE

Front & Rear Gardens
 Double Garage & Driveway
 Paddocks/Equestrian Facilities
 Stable 1: 11'8 x 11'5 (3.56m x 3.48m)
 Stable 2: 11'8 x 11'5 (3.56m x 3.48m)
 Stable 3: 14'6 x 13'11 (4.42m x 4.24m)
 Stable 4: 11'5 x 11'4 (3.48m x 3.46m)

FIRST FLOOR



Main features

- Exceedingly versatile home with a total plot of 4.29 acres
- 4 Stables complimented by 3 separate paddocks
- Double garage incorporating facilities & storage
- Convenient location close to M20, West Malling & mainline train station
- A chain free uncomplicated sale awaits



Nearest Schools

Primary Schools: Offham Primary 0.6 miles, Trottiscliffe C of E Primary 1.2 miles, Ryarsh Primary 1.5 miles
Secondary Schools: Grange Park School 1.9 miles, Wrotham School 2.4 miles, The Malling School 3.0 miles



Transport Information

Train Stations: West Malling 2.2 miles, Borough Green & Wrotham 2.7 miles, East Malling 3.3 miles



Address

Hernewell Cottage, London Road, Addington, West Malling, Kent, ME19



Directions

For directions to this property please contact us.



Call Kings Hill Branch 01732 222211 ■ wardsofkent.co.uk



■ Legal advice should be taken to verify fixtures/fittings, planning, alterations and/or lease details ■ Appliances & services are untested, dimensions are approximate and floor plans are not to scale



12404875/20230921/NR/NR