



Guide Price
£350,000

Freehold

2x  1x  1x 

**"Courtlands",
Courtlands, Teston,
Teston, Maidstone, Kent,
ME18**

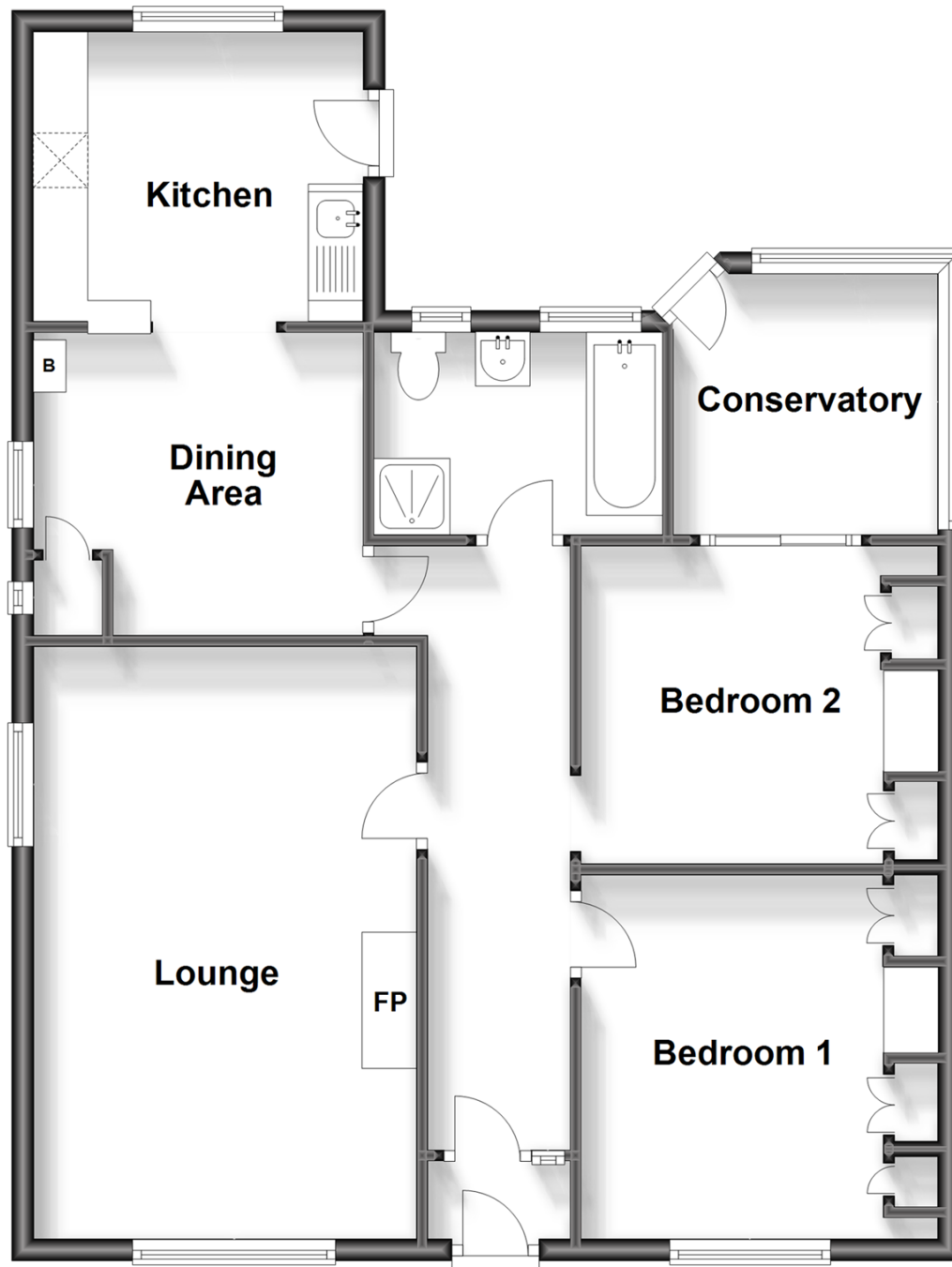
OVER 60?

Secure this property
for up to **59% less!**

Wards
Helping you move forwards

Ground Floor

Approx. 78.6 sq. metres (846.4 sq. feet)



Accommodation

GROUND FLOOR

Entrance Porch

Entrance Hall

Lounge: 18'0 x 11'6 (5.49m x 3.51m)

Dining Area: 9'8 x 8'11 (2.95m x 2.72m)

Kitchen : 9'8 x 9'7 (2.95m x 2.92m)

Conservatory: 8'10 x 8'10 (2.69m x 2.69m)

Bedroom 1: 11'0 x 10'9 (3.36m x 3.28m)

Bedroom 2: 10'9 x 9'11 (3.28m x 3.02m)

Bathroom

OUTSIDE

Front & Rear Gardens

Garage

Driveway



Main features

- Semi detached bungalow in need of modernisation
- Enormous potential and scope for improvement
- Beautiful secluded garden with stunning views
- Popular village location & quiet cul-de-sac setting
- Chain free & priced to sell



Nearest Schools

Primary Schools: Watringbury C of E Primary 0.9 miles, The Discovery School 1.4 miles, Barming Primary 1.5 miles
Secondary Schools: Bower Grove School 2.1 miles, The Malling School 2.3 miles, Oakwood Park Grammar School 2.6 miles



Transport Information

Train Stations: Watringbury 1.0 miles, East Malling 2.5 miles, East Farleigh 2.5 miles



Address

"Courtlands", Courtlands, Teston, Teston, Maidstone, Kent, ME18



Directions

For directions to this property please contact us.



Call Kings Hill Branch 01732 222211 ■ wardsofkent.co.uk



- Legal advice should be taken to verify fixtures/fittings, planning, alterations and/or lease details
- Appliances & services are untested, dimensions are approximate and floor plans are not to scale
- Through a Homewise Home For Life Plan people aged 60+ can secure this property for up to 59% less, by purchasing a Lifetime Lease.



12404886/20230925/SG/NR