

OVER 60?

Secure this property
for up to **59% less!**



Price
£450,000
Freehold

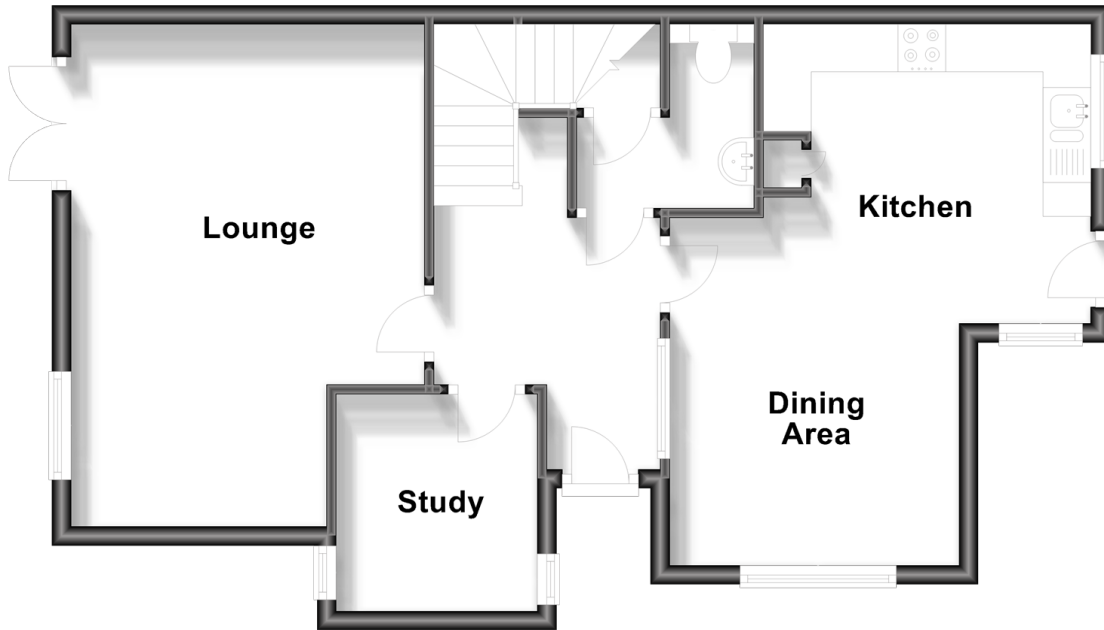
3x  2x  1x 

Edgar Close, Kings Hill, West Malling, Kent,
ME19

Wards
Helping you move forwards

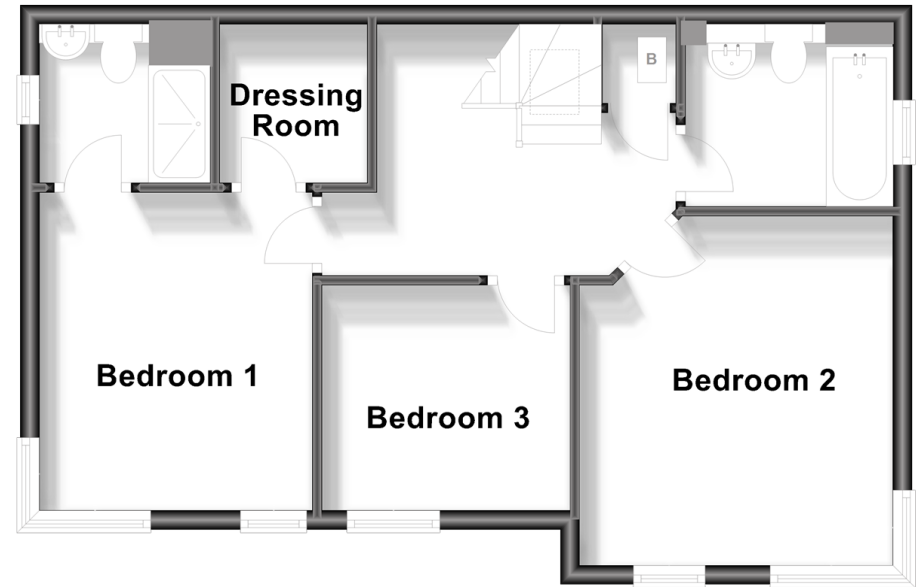
Ground Floor

Approx. 55.8 sq. metres (600.8 sq. feet)



First Floor

Approx. 47.7 sq. metres (513.3 sq. feet)



Accommodation

GROUND FLOOR

Entrance Hall

Cloakroom

Lounge: 17'3 x 12'2 (5.26m x 3.71m)

Dining Area: 11'6 x 10'4 (3.51m x 3.15m)

Kitchen: 11'6 x 10'4 (3.51m x 3.15m)

Study: 8'0 x 7'0 (2.44m x 2.14m)

FIRST FLOOR

Landing

Bedroom 1: 11'4 x 10'8 (3.46m x 3.25m)

En-Suite Shower Room

Dressing Area: 5'1 x 5'1 (1.55m x 1.55m)

Bedroom 2: 13'4 x 11'10 (4.07m x 3.61m)

Bedroom 3: 8'7 x 8'0 (2.62m x 2.44m)

Bathroom

OUTSIDE

Side Garden

Garage



Main features

- Semi-detached house set in a quiet cul-de-sac
- Adaptable accommodation or modern day living
- Useful study
- Conveniently located & easily accessible garage
- Beautifully landscaped sunny aspect garden & further courtyard



Nearest Schools

Primary Schools: Kings Hill School 0.2 miles, Valley Invicta Primary 0.3 miles, The Discovery School 1.1 miles
Secondary Schools: Grange Park School 3.9 miles, The Malling School 4.1 miles, Wrotham School 4.4 miles



Transport Information

Train Stations: West Malling 3.0 miles, East Farleigh 3.6 miles, New Hythe 3.7 miles



Address

Edgar Close, Kings Hill, West Malling, Kent, ME19



Directions

For directions to this property please contact us.



Wards
Helping you move forwards

Call Kings Hill Branch 01732 222211 ■ wardsofkent.co.uk



■ Legal advice should be taken to verify fixtures/fittings, planning, alterations and/or lease details ■ Appliances & services are untested, dimensions are approximate and floor plans are not to scale
■ Through a Homewise Home For Life Plan people aged 60+ can secure this property for up to 59% less, by purchasing a Lifetime Lease.



12404893/20231027/1A/NR